



# TOTAL

STAINLESS & ENGINEERING SUPPLIES



**PROFESSIONAL GLASS AND  
RAILING SYSTEMS  
42.4MM AND 48.3MM**

# ***Index.***

## CONNECTORS



1

## END FITTINGS



8

## HANDRAIL BRACKETS



13

## HANDRAIL SUPPORTS



19

## BASE FLANGES & COVERS



32

## BAR & SHEET HOLDERS



38

## BARS & TUBES



44



## POSTS



47

## SLOT TUBE FITTINGS



57

## GLASS CHANNELS



69

## GLASS



80

## GLASS CLAMPS



85

## GLASS HOLDERS / STANDOFF



96

## GLASS ADAPTERS



103

## ***Index.***

BASE GLASS CLAMPS / SPIGOT



106

SQUARE FITTINGS



113

STREET BOLLARD



123

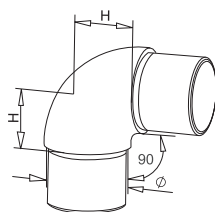
A close-up photograph of two stainless steel pipe connectors. The connectors are made of polished metal with a brushed finish. They are shown in a way that highlights their smooth, curved surfaces and the precision of their manufacturing. The lighting creates bright highlights and soft shadows, emphasizing the metallic texture. The word "CONNECTORS" is printed in a bold, black, sans-serif font on the right side of the image.

# CONNECTORS



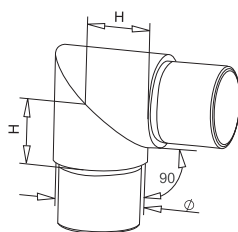
## CONNECTORS

Both AISI304 & AISI316 are available. AISI304 for indoor use; AISI316 for outdoor use.  
Each item is available in either satin finish or mirror finish.



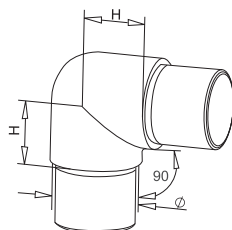
### 90 DEGREE ELBOW RADIUSUED

Stock No.	Ø (mm)	H (mm)
J020134	33.7×2.0	25
J020142	42.4×2.0	30
J020148	48.3×2.0	35
J025142	42.4×2.6	30
J025148	48.3×2.6	35



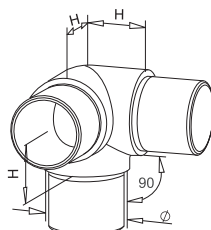
### ACUTE ELBOW

Stock No.	Ø (mm)	H (mm)
J020234	33.7×2.0	25
J020242	42.4×2.0	30
J020248	48.3×2.0	35
J025242	42.4×2.6	30
J025248	48.3×2.6	35



### 90 DEGREE ELBOW

Stock No.	Ø (mm)	H (mm)
J020334	33.7×2.0	25
J020342	42.4×2.0	30
J020348	48.3×2.0	35
J025342	42.4×2.6	30
J025348	48.3×2.6	35

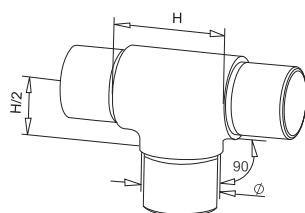


### 90 DEGREE TEE

Stock No.	Ø (mm)	H (mm)
J020434	33.7×2.0	25
J020442	42.4×2.0	30
J020448	48.3×2.0	35
J025442	42.4×2.6	30
J025448	48.3×2.6	35

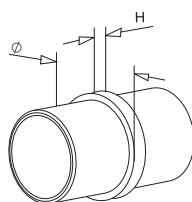
## CONNECTORS

Both AISI304 & AISI316 are available. AISI304 for indoor use; AISI316 for outdoor use.  
Each item is available in either satin finish or mirror finish.



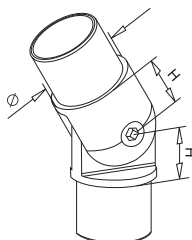
### 90 DEGREE EQUAL TEE

Stock No.	Ø (mm)	H (mm)
J020534	33.7×2.0	50
J020542	42.4×2.0	60
J020548	48.3×2.0	70
J025542	42.4×2.6	60
J025548	48.3×2.6	70



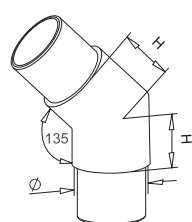
### TUBE CONNECTOR

Stock No.	Ø (mm)	H (mm)
J020634	33.7×2.0	6
J020642	42.4×2.0	6
J020648	48.3×2.0	6
J025642	42.4×2.6	6
J025648	48.3×2.6	6



### ADJUSTABLE ELBOW

Stock No.	Ø (mm)	H (mm)
J020734	33.7×2.0	22
J020742	42.4×2.0	27
J020748	48.3×2.0	30
J025742	42.4×2.6	27
J025748	48.3×2.6	30

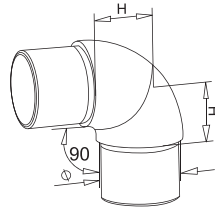


### 135 DEGREE ELBOW

Stock No.	Ø (mm)	H (mm)
J020834	33.7×2.0	25
J020842	42.4×2.0	30
J020848	48.3×2.0	35
J025842	42.4×2.6	30
J025848	48.3×2.6	35

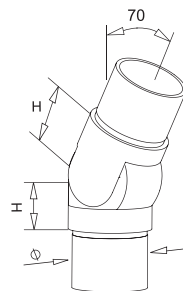
## CONNECTORS

Both AISI304 & AISI316 are available. AISI304 for indoor use; AISI316 for outdoor use.  
Each item is available in either satin finish or mirror finish.



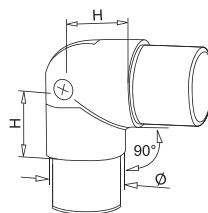
### ROTATABLE ELBOW 90 DEGREE

Stock No.	Ø (mm)	H (mm)
J021234	33.7×2.0	37
J021242	42.4×2.0	47



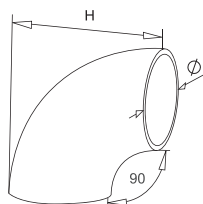
### ADJUSTABLE FLUSH ANGEL 0-70 DEGREE

Stock No.	Ø (mm)	H (mm)
J021342	42.4×2.0	27.5
J021348	48.3×2.0	30
J026348	48.3×2.6	30



### ADJUSTABLE FLUSH ANGEL 90 DEGREE

Stock No.	Ø (mm)	H (mm)
J021442	42.4×2.0	32



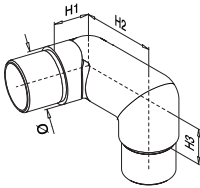
### 90 DEGREE WELDED ELBOW

Stock No.	Ø (mm)	H (mm)
E020606	33.7×2.0	55
E020612	42.4×2.0	70
E020615	42.4×2.6	70
E020618	48.3×2.0	80
E020624	48.3×2.6	80



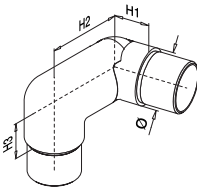
CONNECTORS

Both AISI304 & AISI316 are available. AISI304 for indoor use; AISI316 for outdoor use.  
Each item is available in either satin finish or mirror finish.



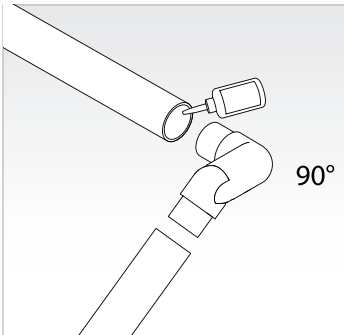
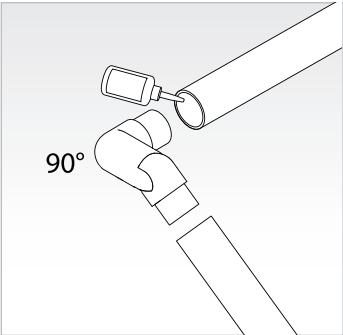
0-70 DEGREE ADJUSTABLE ELBOW-RIGHT

Stock No.	Ø (mm)	H1 (mm)	H2 (mm)	H3 (mm)
J021642	42.4×2.0	27	60	30



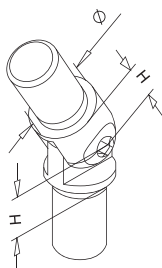
0-70 DEGREE ADJUSTABLE ELBOW-LEFT

Stock No.	Ø (mm)	H1 (mm)	H2 (mm)	H3 (mm)
J021542	42.4×2.0	27	60	30



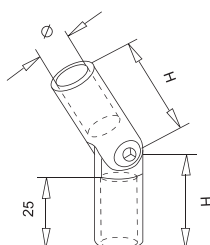
## CONNECTORS

Both AISI304 & AISI316 are available. AISI304 for indoor use; AISI316 for outdoor use.  
Each item is available in either satin finish or mirror finish.



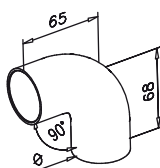
### ADJUSTABLE INSERT CONNECTOR

Stock No.	Ø (mm)	H (mm)
J021016	16×1.0	11



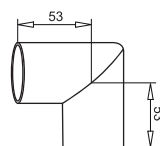
### ADJUSTABLE BAR CONNECTOR

Stock No.	Ø (mm)	H (mm)
J020910	10	35
J020912	12	36
J020914	14	37



### 90 DEGREE ELBOW RADIUS FOR WOOD TUBE

Stock No.	Ø (mm)
J320142	42.4

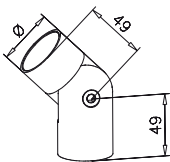


### ACUTE ELBOW FOR WOOD TUBE

Stock No.	Ø (mm)
J320242	42.4

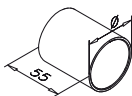
CONNECTORS

Both AISI304 & AISI316 are available. AISI304 for indoor use; AISI316 for outdoor use. Each item is available in either satin finish or mirror finish.



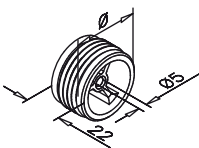
ADJUSTABLE ELBOW FOR WOOD TUBE

Stock No.	Ø (mm)
J320442	42.4



CONNECTOR FOR WOOD TUBE

Stock No.	Ø (mm)
J320342	42.4



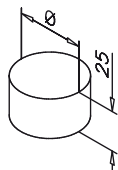
CONNECTOR FOR WOOD TUBE

Stock No.	Ø (mm)
J320042	42.4



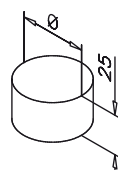
## END FITTINGS

Both AISI304 & AISI316 are available. AISI304 for indoor use; AISI316 for outdoor use.  
Each item is available in either satin finish or mirror finish.



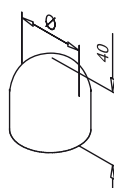
### RADIUSED END CAP FOR WOOD TUBE

Stock No.	Ø (mm)
J330242	42.4



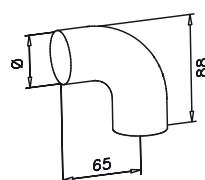
### FLAT END CAP FOR WOOD TUBE

Stock No.	Ø (mm)
J330142	42.4



### HALF BALL END CAP FOR WOOD TUBE

Stock No.	Ø (mm)
J330342	42.4

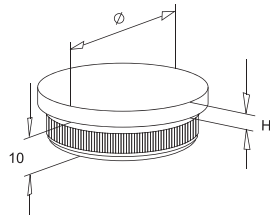


### HANDRAIL END FOR WOOD TUBE

Stock No.	Ø (mm)
J330442	42.4

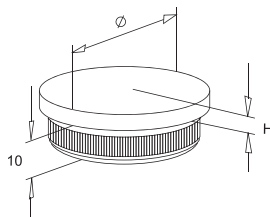
# END FITTINGS

Both AISI304 & AISI316 are available. AISI304 for indoor use; AISI316 for outdoor use.  
Each item is available in either satin finish or mirror finish.



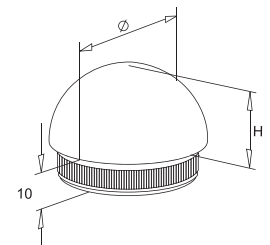
## FLAT CURVED END CAP

Stock No.	Ø (mm)	H (mm)
J080134	33.7×2.0	4
J080142	42.4×2.0	4
J080148	48.3×2.0	4
J085142	42.4×2.6	4
J085148	48.3×2.6	4



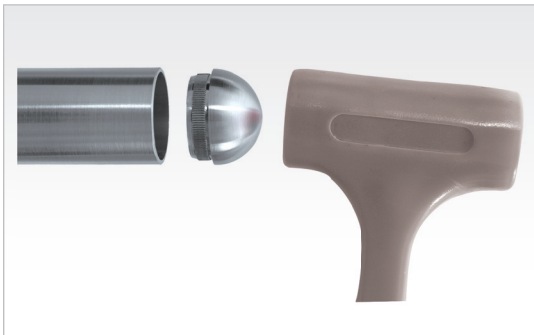
## RADIUSED CURVED END CAP

Stock No.	Ø (mm)	H (mm)
J080234	33.7×2.0	6
J080242	42.4×2.0	6
J080248	48.3×2.0	6
J085242	42.4×2.6	6
J085248	48.3×2.6	6



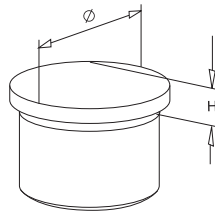
## HALF BALL CURVED END CAP

Stock No.	Ø (mm)	H (mm)
J080334	33.7×2.0	17
J080342	42.4×2.0	21
J080348	48.3×2.0	24
J085342	42.4×2.6	21
J085348	48.3×2.6	24



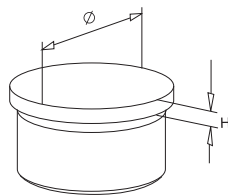
## END FITTINGS

Both AISI304 & AISI316 are available. AISI304 for indoor use; AISI316 for outdoor use.  
Each item is available in either satin finish or mirror finish.



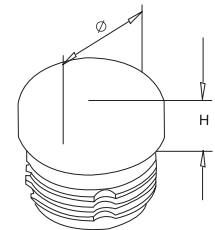
### RADIUSED END CAP

Stock No.	Ø (mm)	H (mm)
J081116	16.0×1.0	4
J081142	42.4×2.0	9
J081148	48.3×2.0	10
J086142	42.4×2.6	9
J086148	48.3×2.6	10



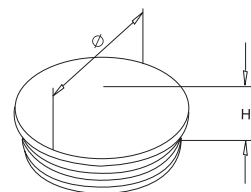
### FLAT END CAP

Stock No.	Ø (mm)	H (mm)
J081242	42.4×2.0	4
J081248	48.3×2.0	4



### ROUND CAPPING PLUG

Stock No.	Ø (mm)	H (mm)
E083006	33.7x2.0	11
E083012	42.4x2.0	16



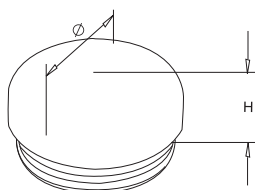
### FLAT END CAP

Stock No.	Ø (mm)	H (mm)
E081006	33.7x2.0	2
E081012	42.4x2.0	2



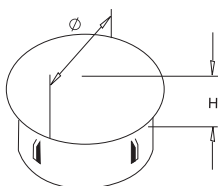
## END FITTINGS

Both AISI304 & AISI316 are available. AISI304 for indoor use; AISI316 for outdoor use.  
Each item is available in either satin finish or mirror finish.



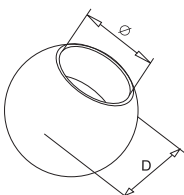
### ROUND END CAP

Stock No.	Ø (mm)	H (mm)
E081206	33.7x2.0	13
E081212	42.4x2.0	13



### END CAP "LIGHT KNOCK-IN"

Stock No.	Ø (mm)	H (mm)
E084612	42.4x2.0	6

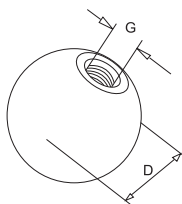


### SOLID BALL-BLIND HOLE

Stock No.	Ø (mm)	D (mm)
E081806	10	20
E081808	12	20
E081810	14	20
E081813	10	25
E081816	12	25
E081818	14	25
E081826	12	30
E081828	14	30
E081848	33.7	45
E081852	42.4	55

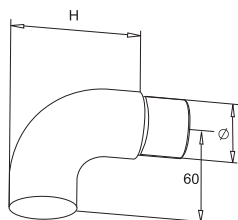
## END FITTINGS

Both AISI304 & AISI316 are available. AISI304 for indoor use; AISI316 for outdoor use.  
Each item is available in either satin finish or mirror finish.



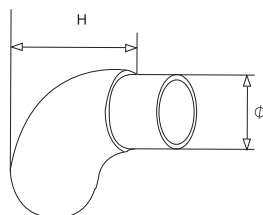
### SOLID BALL-THREAD HOLE

Stock No.	G (mm)	D (mm)
E082606	M6	15
E082612	M6	20
E082618	M6	25
E082624	M6	30
E082625	M8	25
E082627	M8	30
E082630	M8	40
E082636	M8	50
E082640	M8	60



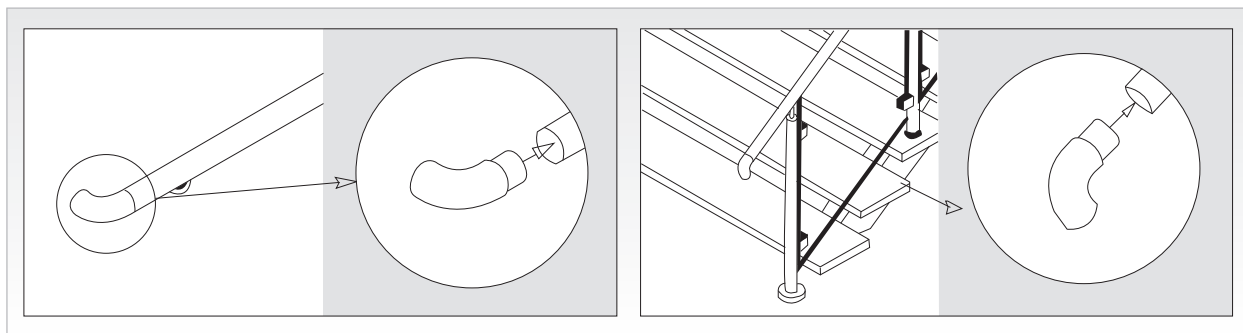
### HANDRAIL END

Stock No.	Ø (mm)	H (mm)
J082334	33.7×2.0	77
J082342	42.4×2.0	81
J082348	48.3×2.0	84
J087342	42.4×2.6	81
J087348	48.3×2.6	84



### HANDRAIL END "90 DEGREE"

Stock No.	Ø (mm)	H (mm)
E084806	33.7×2.0	55
E084812	42.4×2.0	64
E084824	48.3×2.0	72

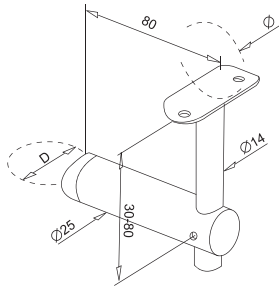




## HANDRAIL BRACKETS

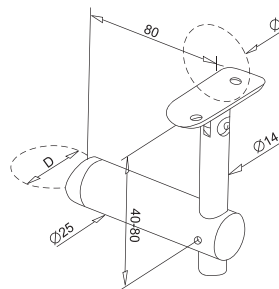
## HANDRAIL BRACKETS

Both AISI304 & AISI316 are available. AISI304 for indoor use; AISI316 for outdoor use.  
Each item is available in either satin finish or mirror finish.



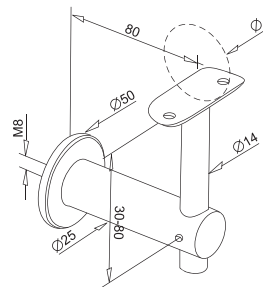
### HANDRAIL TUBE BRACKET

Stock No.	Ø (mm)	D (mm)
J090100	Flat	Flat
J090142	42.4	Flat
J090148	48.3	Flat
J090300	Flat	42.4
J090342	42.4	42.4
J090348	48.3	42.4
J090400	Flat	48.3
J090448	48.3	48.3



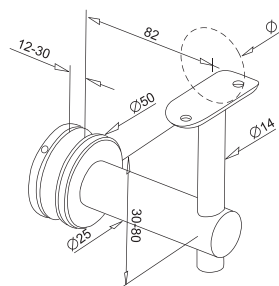
### ADJUSTABLE HANDRAIL TUBE BRACKET

Stock No.	Ø (mm)	D (mm)
J090500	Flat	Flat
J090542	42.4	Flat
J090548	48.3	Flat
J090700	Flat	42.4
J090742	42.4	42.4
J090748	48.3	42.4
J090800	Flat	48.3
J090848	48.3	48.3



### HANDRAIL WALL BRACKET

Stock No.	Ø (mm)
J091100	Flat
J091142	42.4
J091148	48.3

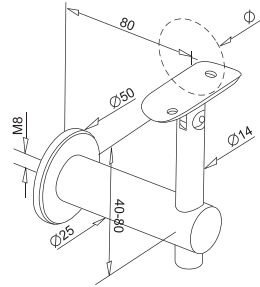


### HANDRAIL GLASS BRACKET

Stock No.	Ø (mm)
J091200	Flat
J091242	42.4
J091248	48.3

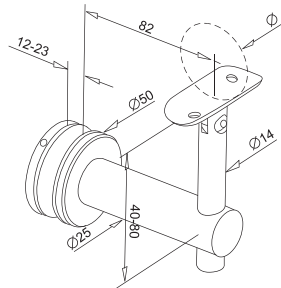
## HANDRAIL BRACKETS

Both AISI304 & AISI316 are available. AISI304 for indoor use; AISI316 for outdoor use.  
Each item is available in either satin finish or mirror finish.



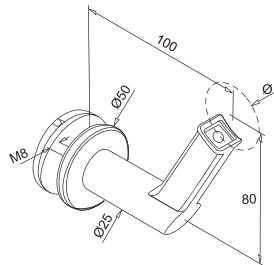
### ADJUSTABLE HANDRAIL WALL BRACKET

Stock No.	Ø (mm)
J091300	Flat
J091342	42.4
J091348	48.3



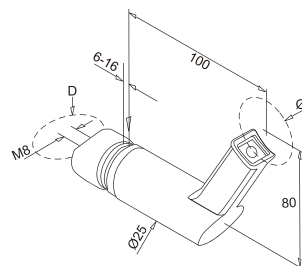
### ADJUSTABLE HANDRAIL GLASS BRACKET

Stock No.	Ø (mm)
J091400	Flat
J091442	42.4
J091448	48.3



### HANDRAIL GLASS BRACKET

Stock No.	Ø (mm)
S431742	42.4
S431748	48.3

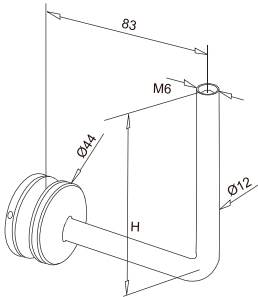


### HANDRAIL GLASS BRACKET

Stock No.	Ø (mm)	D (mm)
J094442	42.4	42.4
J094448	42.4	48.3
J094042	42.4	Flat
J094048	48.3	Flat
J094548	48.3	48.3

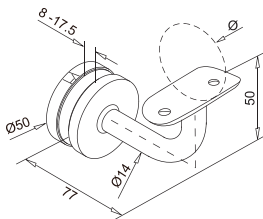
# HANDRAIL BRACKETS

Both AISI304 & AISI316 are available. AISI304 for indoor use; AISI316 for outdoor use.  
Each item is available in either satin finish or mirror finish.



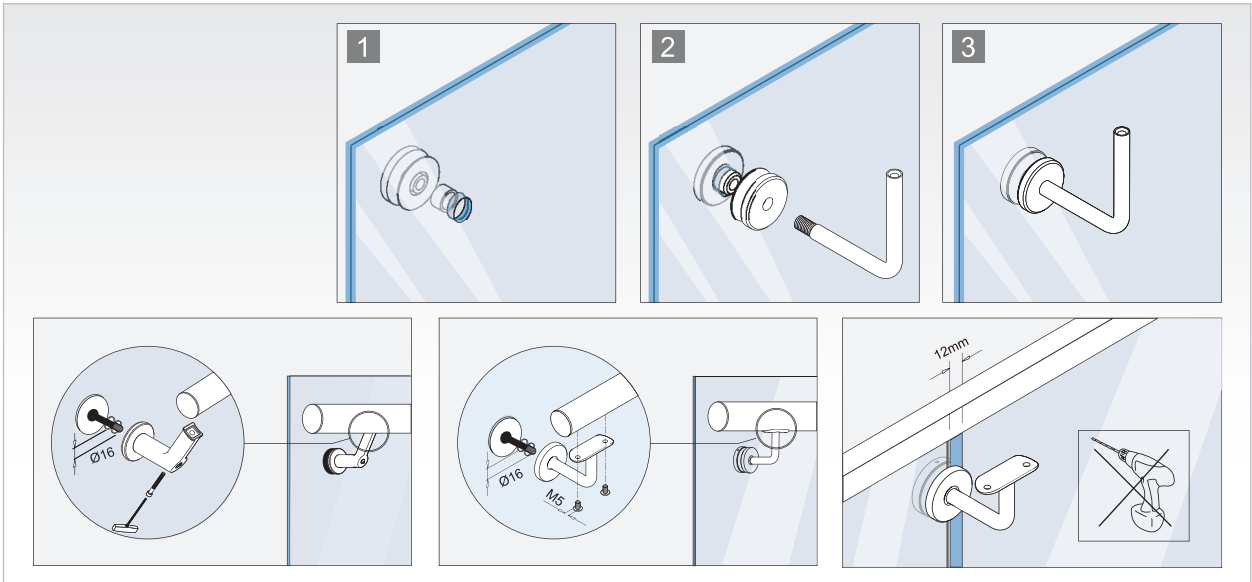
## HANDRAIL GLASS BRACKET

Stock No.	H (mm)
J091480	94



## HANDRAIL GLASS BRACKET

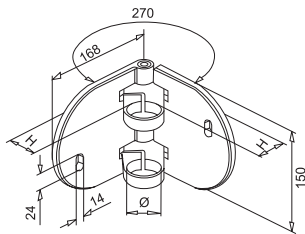
Stock No.	Ø (mm)
J093000	Flat
J093034	33.7
J093042	42.4
J093048	48.3





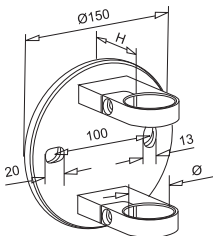
# HANDRAIL BRACKETS

A.Material: Both AISI304 & AISI316 are available. AISI304 for indoor use; AISI316 for outdoor use.  
B.Surface: Each item is available in either satin finish or mirror finish.



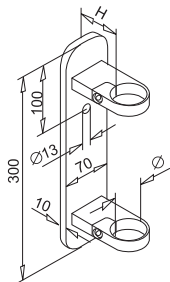
## HINGE WALL BRACKET

Stock No.	Ø (mm)	H (mm)
J051042	42.4	45
J051048	48.3	45



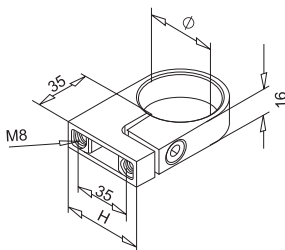
## ROUND WALL BRACKET

Stock No.	Ø (mm)	H (mm)
J051134	33.7	45
J051142	42.4	45
J051148	48.3	45
J051242	42.4	60
J051248	48.3	60



## OBLONG WALL BRACKET

Stock No.	Ø (mm)	H (mm)
J051342	42.4	45
J051348	48.3	45
J051442	42.4	60
J051448	48.3	60

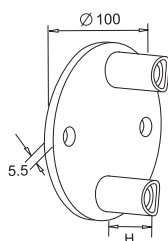


## WALL BRACKET-CLAMP RING

Stock No.	Ø (mm)	H (mm)
J050034	33.7	45
J050042	42.4	50
J050048	48.3	55

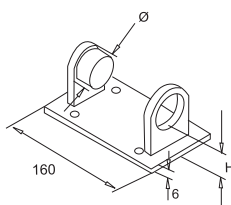
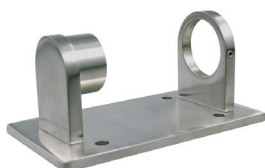
## HANDRAIL BRACKETS

A.Material: Both AISI304 & AISI316 are available. AISI304 for indoor use; AISI316 for outdoor use.  
B.Surface: Each item is available in either satin finish or mirror finish.



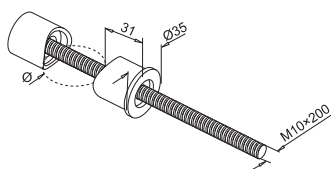
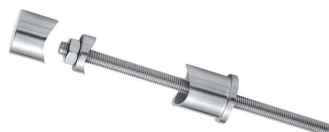
### WALL BRACKET

Stock No.	Ø (mm)	H (mm)
J051542	42.4	40



### WALL BRACKET

Stock No.	Ø (mm)	H (mm)
E032016	42.4×2.0	28
E032020	42.4×2.6	28
E032026	48.3×2.0	29
E032032	48.3×2.6	29



### TUBE-WALL CONNECTOR

Stock No.	Ø (mm)
J023442	42.4

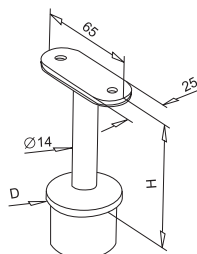


## HANDRAIL SUPPORTS



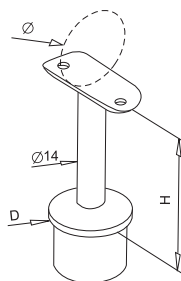
## HANDRAIL SUPPORTS

A.Material: Both AISI304 & AISI316 are available. AISI304 for indoor use; AISI316 for outdoor use.  
B.Surface: Each item is available in either satin finish or mirror finish.



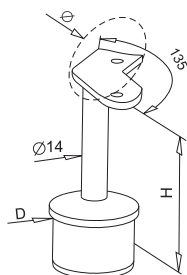
### HANDRAIL SUPPORT FLAT-TUBE

Stock No.	H (mm)	D (mm)
J070100	80	33.7×2.0
J070200	81	42.4×2.0
J070300	82	48.3×2.0
J075200	81	42.4×2.6
J075300	82	48.3×2.6



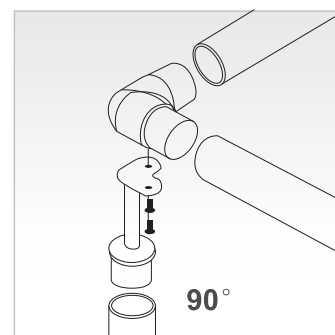
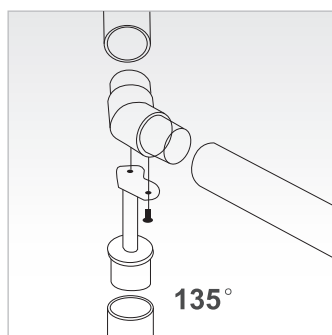
### HANDRAIL SUPPORT TUBE-TUBE

Stock No.	Ø (mm)	H (mm)	D (mm)
J070134	33.7	78	33.7×2.0
J070142	42.4	78	33.7×2.0
J070242	42.4	79	42.4×2.0
J070248	48.3	79	42.4×2.0
J070348	48.3	80	48.3×2.0
J075242	42.4	79	42.4×2.6
J075248	48.3	79	42.4×2.6
J075342	42.4	80	48.3×2.6
J075348	48.3	80	48.3×2.6
J075360	60.3	80	48.3×2.6



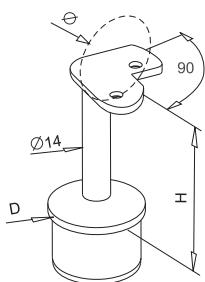
### HANDRAIL SUPPORT TUBE-TUBE 135 DEGREE

Stock No.	Ø (mm)	H (mm)	D (mm)
J072034	33.7	78	33.7×2.0
J072042	42.4	78	33.7×2.0
J072142	42.4	79	42.4×2.0
J072148	48.3	79	42.4×2.0
J072248	48.3	80	48.3×2.0
J077142	42.4	79	42.4×2.6
J077148	48.3	79	42.4×2.6
J077242	42.4	80	48.3×2.6
J077248	48.3	80	48.3×2.6



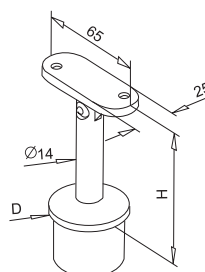
## HANDRAIL SUPPORTS

A.Material: Both AISI304 & AISI316 are available. AISI304 for indoor use; AISI316 for outdoor use.  
B.Surface: Each item is available in either satin finish or mirror finish.



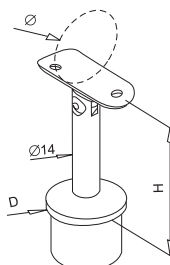
### HANDRAIL SUPPORT TUBE-TUBE 90 DEGREE

Stock No.	Ø (mm)	H (mm)	D (mm)
J072534	33.7	78	33.7×2.0
J072542	42.4	78	33.7×2.0
J072642	42.4	79	42.4×2.0
J072648	48.3	79	42.4×2.0
J072748	48.3	80	48.3×2.0
J077642	42.4	79	42.4×2.6
J077648	48.3	79	42.4×2.6
J077742	42.4	80	48.3×2.6
J077748	48.3	80	48.3×2.6
J077760	60.3	80	48.3×2.6



### ADJUSTABLE HANDRAIL SUPPORT FLAT-TUBE

Stock No.	H (mm)	D (mm)
J070500	80	33.7×2.0
J070600	81	42.4×2.0
J070700	82	48.3×2.0
J075600	81	42.4×2.6
J075700	82	48.3×2.6

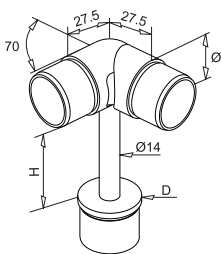


### ADJUSTABLE HANDRAIL SUPPORT TUBE-TUBE

Stock No.	Ø (mm)	H (mm)	D (mm)
J070534	33.7	78	33.7×2.0
J070542	42.4	78	33.7×2.0
J070642	42.4	79	42.4×2.0
J070648	48.3	79	42.4×2.0
J070748	48.3	80	48.3×2.0
J075642	42.4	79	42.4×2.6
J075648	48.3	79	42.4×2.6
J075742	42.4	80	48.3×2.6
J075748	48.3	80	48.3×2.6
J075760	60.3	80	48.3×2.6

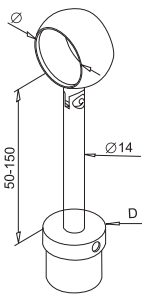
HANDRAIL SUPPORTS

A.Material: Both AISI304 & AISI316 are available. AISI304 for indoor use; AISI316 for outdoor use.  
B.Surface: Each item is available in either satin finish or mirror finish.



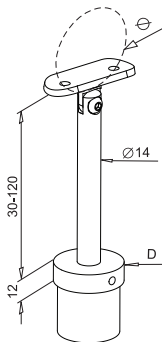
HANDRAIL ADAPTER

Stock No.	Ø (mm)	H (mm)	D (mm)
J071842	42.4×2.0	79	42.4
J071848	48.3×2.0	79	48.3



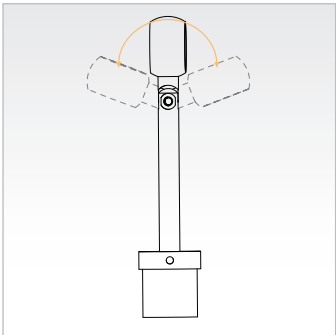
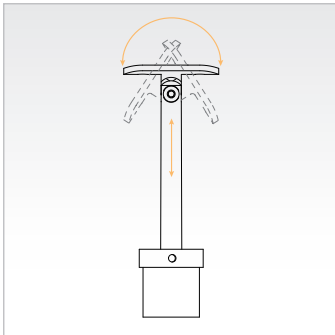
ADJUSTABLE CENTRAL HANDRAIL  
SUPPORT

Stock No.	Ø (mm)	D (mm)
J070942	42.4	42.4x2.0



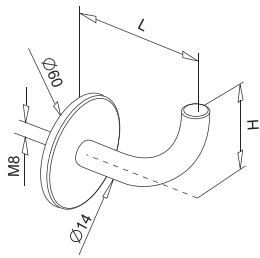
ADJUSTABLE CENTRAL HANDRAIL  
SUPPORT

Stock No.	Ø (mm)	D (mm)
J071242	42.4	42.4x2.0



# HANDRAIL SUPPORTS

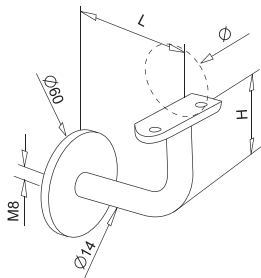
A.Material: Both AISI304 & AISI316 are available. AISI304 for indoor use; AISI316 for outdoor use.  
B.Surface: Each item is available in either satin finish or mirror finish.



## HANDRAIL SUPPORT FOR WELDING WITHOUT HOLES

Stock No.	L (mm)	H (mm)
J091800	74	50

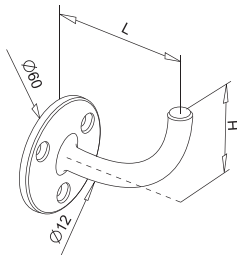
\* Length of bar could be customized



## HANDRAIL SUPPORT FOR TUBE WITHOUT HOLE

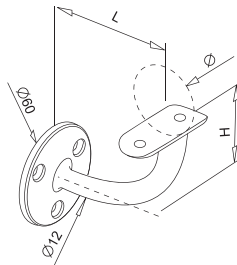
Stock No.	Ø (mm)	L (mm)	H (mm)
J091500	Flat	74	50
J091534	33.7	74	50
J091542	42.4	74	50
J091548	48.3	74	50

\* Length of bar could be customized



## HANDRAIL SUPPORT FOR WELDING

Stock No.	L (mm)	H (mm)
J091700	75	50



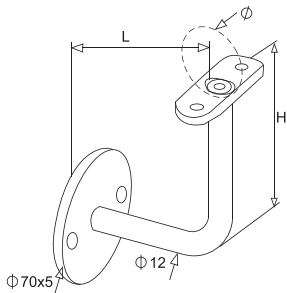
## HANDRAIL SUPPORT FOR TUBE

Stock No.	Ø (mm)	L (mm)	H (mm)
J091634	33.7	75	50
J091642	42.4	75	50
J091648	48.3	75	50



# HANDRAIL SUPPORTS

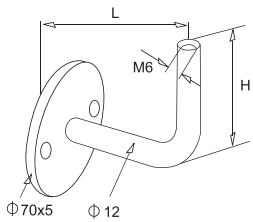
A.Material: Both AISI304 & AISI316 are available. AISI304 for indoor use; AISI316 for outdoor use.  
B.Surface: Each item is available in either satin finish or mirror finish.



## HANDRAIL SUPPORT

Stock No.	Ø (mm)	L (mm)	H (mm)
J091934	33.7	75	74
J091942	42.4	75	74
J091948	48.3	75	74

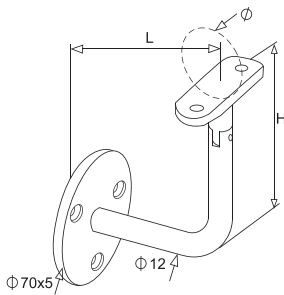
\* Length of bar could be customized



## HANDRAIL SUPPORT

Stock No.	L (mm)	H (mm)
J092006	75	70

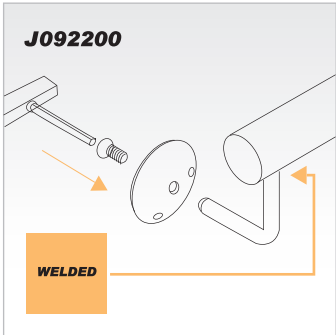
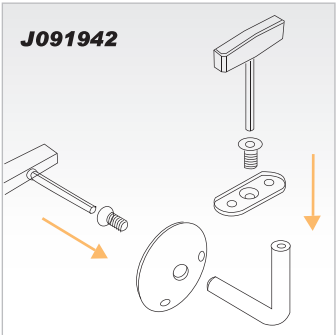
\* Length of bar could be customized



## HANDRAIL SUPPORT

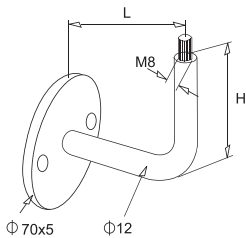
Stock No.	Ø (mm)	L (mm)	H (mm)
E042816	42.4	76	90

\* Length of bar could be customized



HANDRAIL SUPPORTS

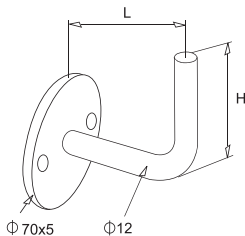
A.Material: Both AISI304 & AISI316 are available. AISI304 for indoor use; AISI316 for outdoor use.  
B.Surface: Each item is available in either satin finish or mirror finish.



HANDRAIL SUPPORT

Stock No.	L (mm)	H (mm)
J092108	75	70

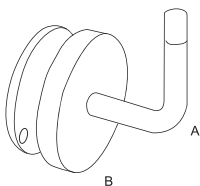
\* Length of bar could be customized



HANDRAIL SUPPORT

Stock No.	L (mm)	H (mm)
J092200	75	70

\* Length of bar could be customized



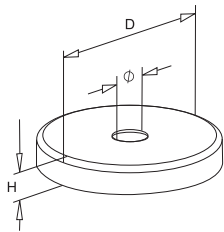
HANDRAIL SUPPORT FOR WELDING WITH COVER

Stock No.	Part A Stock No.	Part B Stock No.
J092300	J092200	J040712

\* Length of bar could be customized

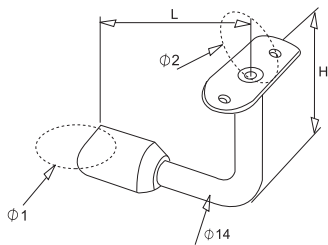
# HANDRAIL SUPPORTS

A.Material: Both AISI304 & AISI316 are available. AISI304 for indoor use; AISI316 for outdoor use.  
B.Surface: Each item is available in either satin finish or mirror finish.



## COVER PLATE

Stock No.	D×H (mm)	Ø (mm)
J040712	75×12	12



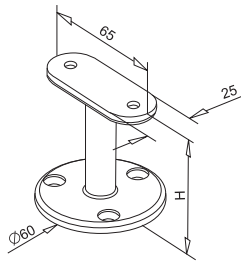
## BENT SUPPORT

Stock No.	Ø1-Ø2 (mm)	L (mm)	H (mm)
E044406	42.4-33.7	62	67
E044416	42.4-42.4	62	67
E044426	48.3-42.4	62	67



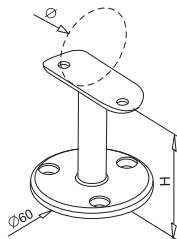
HANDRAIL SUPPORTS

A.Material: Both AISI304 & AISI316 are available. AISI304 for indoor use; AISI316 for outdoor use.  
B.Surface: Each item is available in either satin finish or mirror finish.



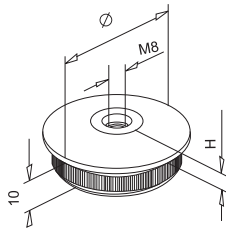
HANDRAIL FLANGE SUPPORT- FLAT

Stock No.	H (mm)
J071100	62



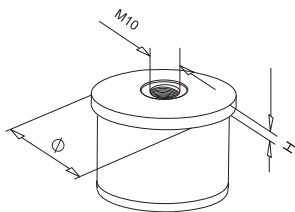
HANDRAIL FLANGE SUPPORT- FOR TUBE

Stock No.	Ø (mm)	H (mm)
J071142	42.4	60
J071148	48.3	60



RADIUSED CURVED TUBE BASE

Stock No.	Ø (mm)	H (mm)
J030134	33.7×2.0	5.5
J030142	42.4×2.0	5.5
J030148	48.3×2.0	5.5
J035142	42.4×2.6	5.5
J035148	48.3×2.6	5.5

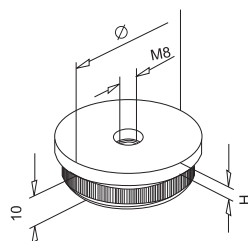


TUBE BASE

Stock No.	Ø (mm)	H (mm)
J074034	33.7×2.0	7
J074042	42.4×2.0	8
J074048	48.3×2.0	9
J074542	42.4×2.6	8
J074548	48.3×2.6	9

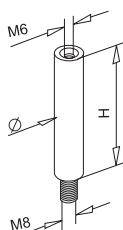
## HANDRAIL SUPPORTS

A.Material: Both AISI304 & AISI316 are available. AISI304 for indoor use; AISI316 for outdoor use.  
B.Surface: Each item is available in either satin finish or mirror finish.



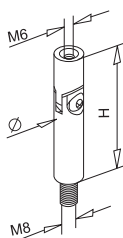
### FLAT CURVED TUBE BASE

Stock No.	Ø (mm)	H (mm)
J030234	33.7×2.0	4
J030242	42.4×2.0	4
J030248	48.3×2.0	4
J035242	42.4×2.6	4
J035248	48.3×2.6	4



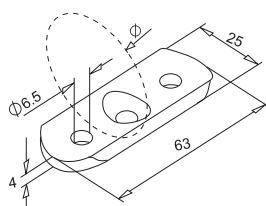
### STRAIGHT PIN

Stock No.	Ø (mm)	H (mm)
J031368	12	68
J031168	14	68



### ADJUSTABLE PIN

Stock No.	Ø (mm)	H (mm)
J031468	12	68
J031268	14	68

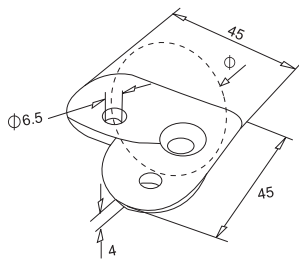


### PLATE

Stock No.	Ø (mm)	Size (mm)	For Bar (mm)
J090000	Flat	63×25×4	12
J090034	33.7	63×25×4	12
J090042	42.4	63×25×4	12
J090048	48.3	63×25×4	12
J095034	33.7	63×25×4	14
J095042	42.4	63×25×4	14
J095048	48.3	63×25×4	14

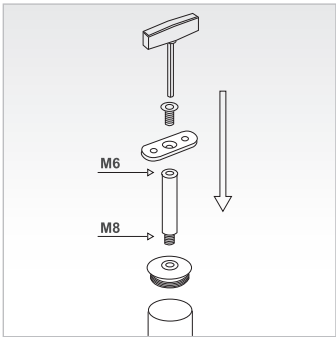
# HANDRAIL SUPPORTS

A.Material: Both AISI304 & AISI316 are available. AISI304 for indoor use; AISI316 for outdoor use.  
B.Surface: Each item is available in either satin finish or mirror finish.



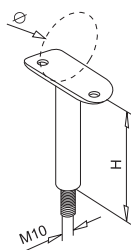
## 90 DEGREE PLATE

Stock No.	Ø (mm)	H (mm)
J033600	Flat	45×45×4
J033634	33.7	45×45×4
J033642	42.4	45×45×4
J033648	48.3	45×45×4



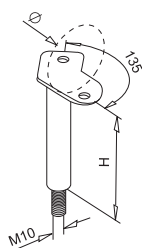
## BALUSTER SUPPORTS

A. Material: Both AISI304 & AISI316 are available. AISI304 for indoor use; AISI316 for outdoor use.  
B. Surface: Each item is available in either satin finish or mirror finish.



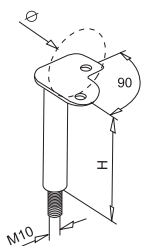
### PIVOT WITH PLATE

Stock No.	Ø (mm)	H (mm)
J032100	Flat	73
J032134	33.7	71
J032142	42.4	71
J032148	48.3	71



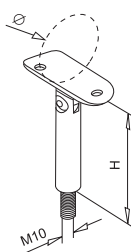
### PIVOT WITH 135 DEGREE CORNER PLATE

Stock No.	Ø (mm)	H (mm)
J032234	33.7	71
J032242	42.4	71
J032248	48.3	71



### PIVOT WITH 90 DEGREE CORNER PLATE

Stock No.	Ø (mm)	H (mm)
J032334	33.7	71
J032342	42.4	71
J032348	48.3	71



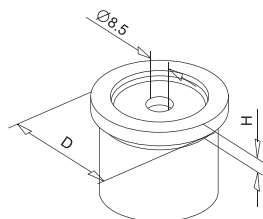
### ADJUSTABLE PIVOT WITH PLATE

Stock No.	Ø (mm)	H (mm)
J032400	Flat	73
J032434	33.7	71
J032442	42.4	71
J032448	48.3	71



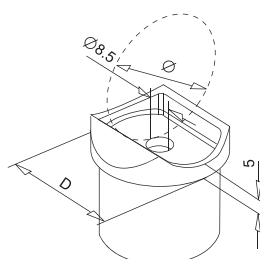
## BALUSTER SUPPORTS

A. Material: Both AISI304 & AISI316 are available. AISI304 for indoor use; AISI316 for outdoor use.  
B. Surface: Each item is available in either satin finish or mirror finish.



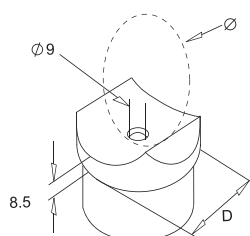
### ADAPTER FLAT-TUBE

Stock No.	D (mm)	H (mm)
J092400	33.7×2.0	5
J092500	42.4×2.0	5
J092600	48.3×2.0	5



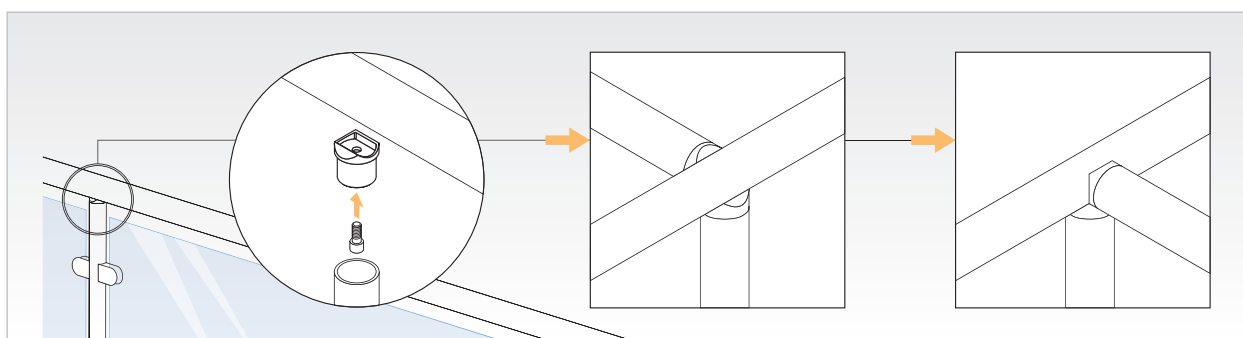
### ADAPTER TUBE-TUBE

Stock No.	Ø (mm)	D (mm)
J092434	33.7	33.7×2.0
J092442	42.4	33.7×2.0
J092448	48.3	33.7×2.0
J092542	42.4	42.4×2.0
J092548	48.3	42.4×2.0
J092648	48.3	48.3×2.0
J092760	60.3	60.3×2.0
J097542	42.4	42.4×2.6
J097548	48.3	42.4×2.6
J097648	48.3	48.3×2.6



### TUBE SADDLE

Stock No.	Ø (mm)	D (mm)
E042212	42.4	42.4×2.0

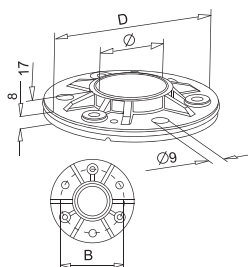
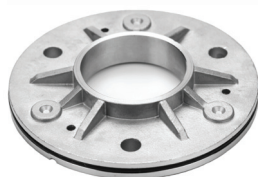




## BASE FLANGES & COVERS

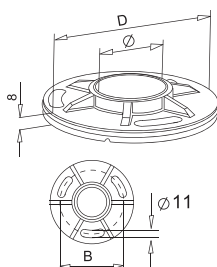
## BASE FLANGES & COVERS

A. Material: Both AISI304 & AISI316 are available. AISI304 for indoor use; AISI316 for outdoor use.  
B. Surface: Each item is available in either satin finish or mirror finish.



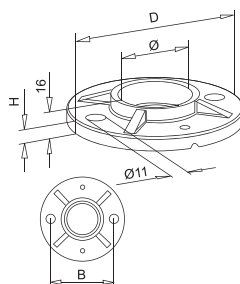
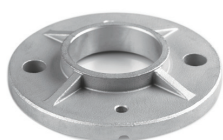
### POST-BASE PLATE

Stock No.	Ø (mm)	D (mm)	B (mm)
J101542	42.4	Ø105	80
J101548	48.3	Ø115	90



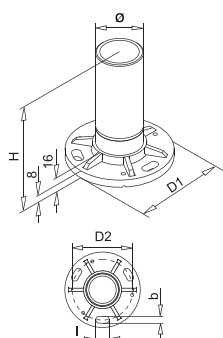
### POST-BASE PLATE

Stock No.	Ø (mm)	D (mm)	B (mm)
J101842	42.4	Ø120	90
J101848	48.3	Ø120	90



### POST-BASE PLATE

Stock No.	Ø (mm)	D (mm)	B (mm)
J101642	42.4	Ø100	75
J101648	48.3	Ø100	75
J101742	42.4	Ø120	90
J101748	48.3	Ø120	90

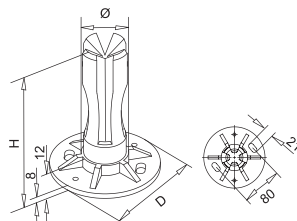


### POST-BASE PLATE

Stock No.	Ø (mm)	H (mm)	D1 (mm)	D2 (mm)	b×l (mm)
J052134	33.7×2.0	126	100	80	9×28
J052142	42.4×2.0	117	100	80	9×18
J052148	48.3×2.0	117	100	80	9×18

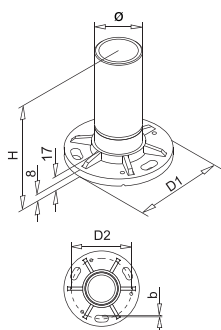
## BASE FLANGES & COVERS

A.Material: Both AISI304 & AISI316 are available. AISI304 for indoor use; AISI316 for outdoor use.  
B.Surface: Each item is available in either satin finish or mirror finish.



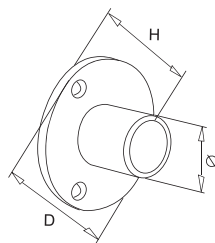
### ANGLE BASE FLANGE

Stock No.	Ø (mm)	H (mm)	D (mm)
J104042	42.4×2.0	120	100



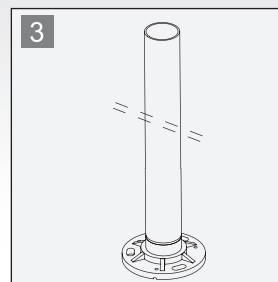
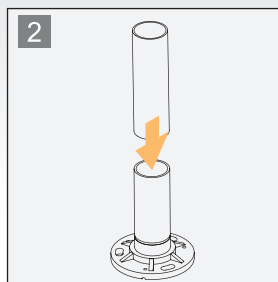
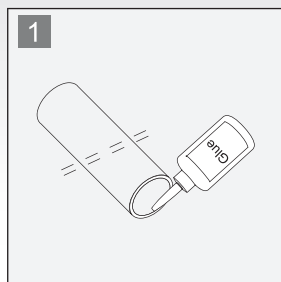
### POST-BASE PLATE

Stock No.	Ø (mm)	H (mm)	D1 (mm)	D2 (mm)	b (mm)
J057242	42.4X2.6	117	120	90	11
J057248	48.3X2.6	117	120	90	11



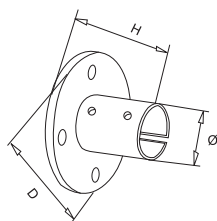
### MOUNTING ROUND BASE

Stock No.	Ø (mm)	H (mm)	D (mm)
E030406	29.6	51	80
E030412	38.3	51	80
E030212	38.3	67	120
E030242	38.3	67	100
E030218	44.2	67	120



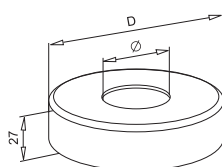
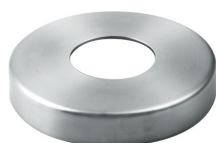
## BASE FLANGES & COVERS

A. Material: Both AISI304 & AISI316 are available. AISI304 for indoor use; AISI316 for outdoor use.  
B. Surface: Each item is available in either satin finish or mirror finish.



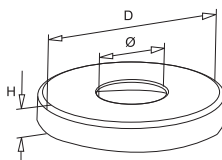
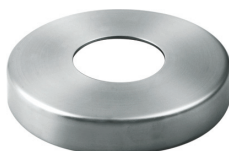
### ADJUSTABLE BASE PLATE

Stock No.	Ø (mm)	For Tube (mm)	H (mm)	D (mm)
E031006	29.4	33.7×2.0	71	80
E031016	38.1	42.4×2.0	71	100



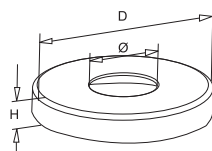
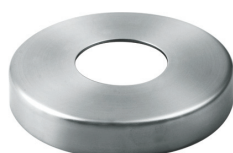
### COVER PLATE

Stock No.	Ø (mm)	D (mm)	Wall (mm)
J040142	42.4	Ø110	4
J040148	48.3	Ø120	4



### COVER PLATE

Stock No.	Ø (mm)	H (mm)	D (mm)
J040834	33.7	12	85
J040842	42.4	12	85
E050206	33.7	13	85
E050216	42.4	13	85

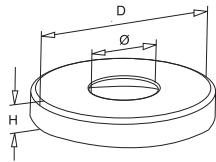
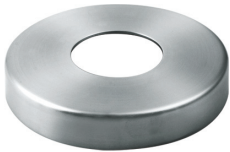


### COVER PLATE

Stock No.	Ø (mm)	H (mm)	D (mm)
J040400	-	18	105
J040434	33.7	18	105
J040442	42.4	18	105
J040448	48.3	18	105
J040460	60.3	18	105
E050624	42.4	25	105
E050636	48.3	25	105

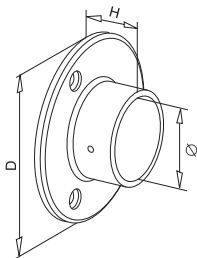
BASE FLANGES & COVERS

A.Material: Both AISI304 & AISI316 are available. AISI304 for indoor use; AISI316 for outdoor use.  
B.Surface: Each item is available in either satin finish or mirror finish.



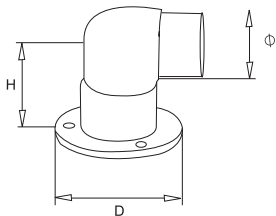
COVER PLATE

Stock No.	Ø (mm)	H (mm)	D (mm)
J040542	42.4	18	125
J040548	48.3	18	125
J040560	60.3	18	125
E050226	42.4	16	125
E050236	48.3	16	125
E050642	42.4	25	125
E050648	48.3	25	125



ROUND FLANGE

Stock No.	Ø (mm)	H (mm)	D (mm)
J050134	33.9	19.5	70
J050142	42.4	25	85
J050148	48.3	28	94



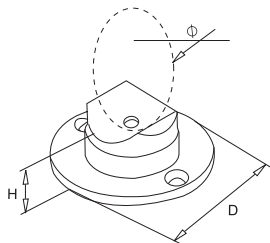
90 DEGREE BASE PLATE

Stock No.	Ø (mm)	H (mm)	D (mm)
E031412	42.4×2.0	51.2	76
E031212	42.4×2.0	85.8	76



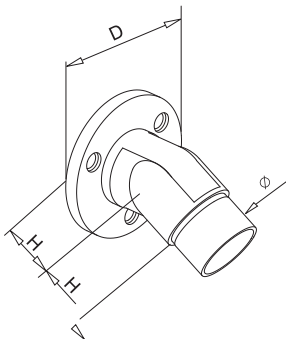
BASE FLANGES & COVERS

A.Material: Both AISI304 & AISI316 are available. AISI304 for indoor use; AISI316 for outdoor use.  
B.Surface: Each item is available in either satin finish or mirror finish.



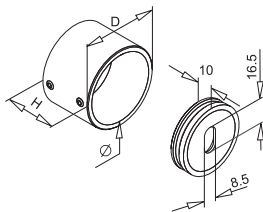
BASE PLATE

Stock No.	Ø (mm)	H (mm)	D (mm)
E031612	42.4	30	76



ARTICULATED ELBOW BASE PLATE

Stock No.	Ø (mm)	H (mm)	D (mm)
J103042	42.4×2.0	30	75
J103542	42.4×2.6	30	75



END CAP

Stock No.	Ø (mm)	H (mm)	D (mm)
J028642	42.4	35	50

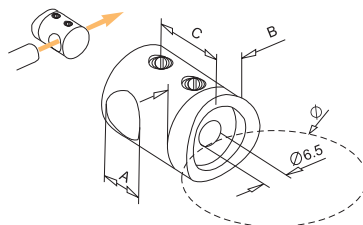
A close-up photograph of a stainless steel bar and sheet holder. The image shows a vertical support post with a horizontal bar passing through it. A smaller horizontal bar is attached to the side of the support post via a cylindrical bracket. The background is a blurred blue sky. The text "BAR & SHEET HOLDERS" is overlaid in white capital letters on the left side of the image.

## BAR & SHEET HOLDERS



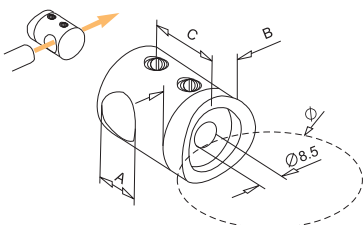
## BAR & SHEET HOLDERS

A. Material: Both AISI304 & AISI316 are available. AISI304 for indoor use; AISI316 for outdoor use.  
B. Surface: Each item is available in either satin finish or mirror finish



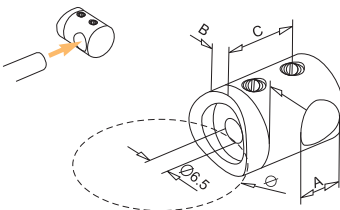
### BAR HOLDER-THROUGH HOLE

Stock No.	Ø (mm)	A (mm)	B (mm)	C (mm)
J011000	Flat	10	22	20
J011034	33.7	10	22	20
J011042	42.4	10	22	20
J011200	Flat	12	22	20
J011234	33.7	12	22	20
J011242	42.4	12	22	20
J011248	48.3	12	22	20



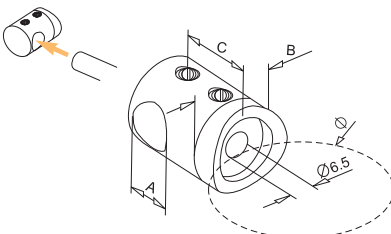
### BAR HOLDER-THROUGH HOLE

Stock No.	Ø (mm)	A (mm)	B (mm)	C (mm)
J011400	Flat	14	25	25
J011442	42.4	14	25	25
J011448	48.3	14	25	25
J011600	Flat	16	25	25
J011642	42.4	16	25	25
J011648	48.3	16	25	25



### BAR HOLDER-LEFT BLIND

Stock No.	Ø (mm)	A (mm)	B (mm)	C (mm)
J012200	Flat	12	22	20
J012234	33.7	12	22	20
J012242	42.4	12	22	20
J012248	48.3	12	22	20

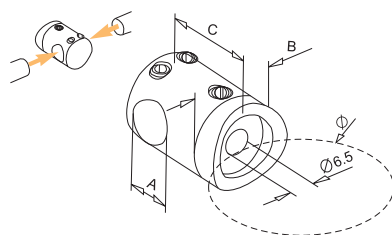


### BAR HOLDER-RIGHT BLIND

Stock No.	Ø (mm)	A (mm)	B (mm)	C (mm)
J013200	Flat	12	22	20
J013234	33.7	12	22	20
J013242	42.4	12	22	20
J013248	48.3	12	22	20

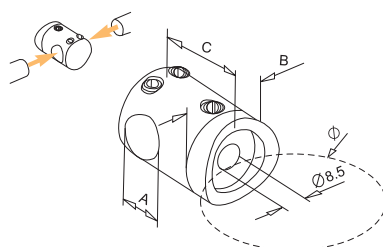
## BAR & SHEET HOLDERS

A.Material: Both AISI304 & AISI316 are available. AISI304 for indoor use; AISI316 for outdoor use.  
B.Surface: Each item is available in either satin finish or mirror finish.



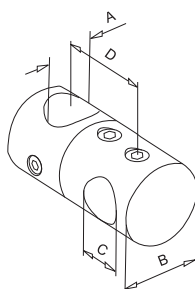
### CONNECTING BAR HOLDER

Stock No.	Ø (mm)	A (mm)	B (mm)	C (mm)
J014000	Flat	10	22	20
J014034	33.7	10	22	20
J014042	42.4	10	22	20
J014200	Flat	12	22	20
J014234	33.7	12	22	20
J014242	42.4	12	22	20
J014248	48.3	12	22	20



### CONNECTING BAR HOLDER

Stock No.	Ø (mm)	A (mm)	B (mm)	C (mm)
J014400	Flat	14	25	25
J014442	42.4	14	25	25
J014448	48.3	14	25	25

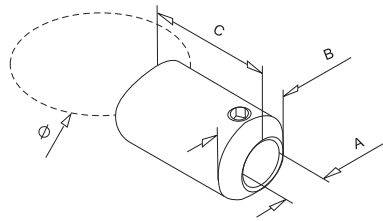


### CROSS BAR HOLDER

Stock No.	A (mm)	B (mm)	C (mm)	D (mm)
J011012	12	22	10	28
J011212	12	22	12	28
J011214	14	22	12	28
J011216	16	22	12	28
J011414	14	22	14	28
J011416	16	25	14	32
J011616	16	25	16	32

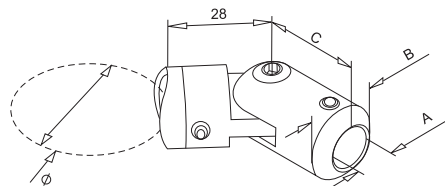
## BAR & SHEET HOLDERS

A.Material: Both AISI304 & AISI316 are available. AISI304 for indoor use; AISI316 for outdoor use.  
B.Surface: Each item is available in either satin finish or mirror finish.



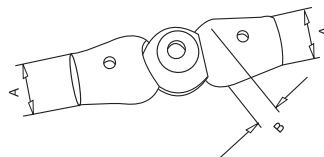
### UPRIGHT TUBE-BAR CONNECTOR

Stock No.	Ø (mm)	A (mm)	B (mm)	C (mm)
J015042	42.4	12	22	35
J015048	48.3	12	22	35



### ADJUSTABLE TUBE-BAR CONNECTOR

Stock No.	Ø (mm)	A (mm)	B (mm)	C (mm)
J015500	Flat	12	22	30
J015542	42.4	12	22	30
J015548	48.3	12	22	30

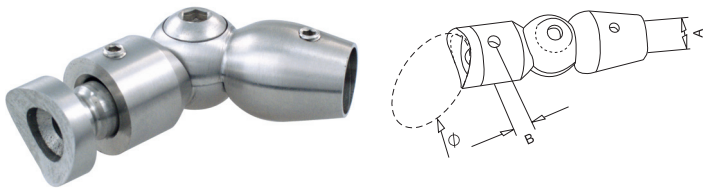


### BAR CONNECTOR

Stock No.	A (mm)	B (mm)
E070406	10	22
E070416	12	22
E070426	14	22
E070436	16	25

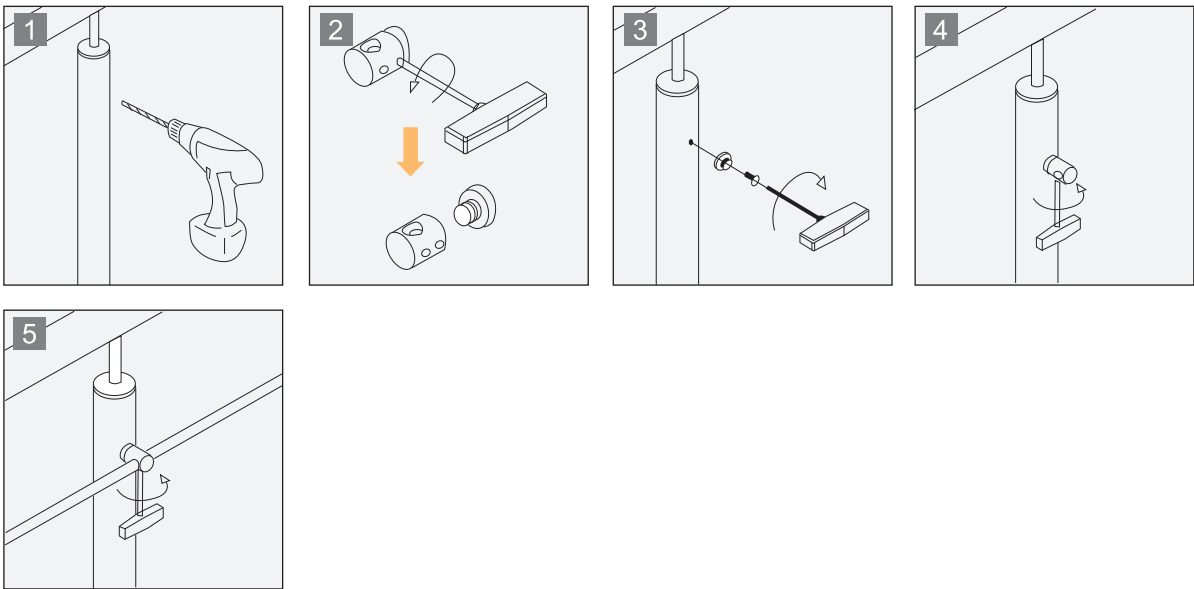
# BAR & SHEET HOLDERS

A.Material: Both AISI304 & AISI316 are available. AISI304 for indoor use; AISI316 for outdoor use.  
B.Surface: Each item is available in either satin finish or mirror finish.



## TUBE AND BAR CONNECTOR

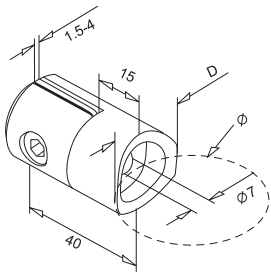
Stock No.	Ø (mm)	A (mm)	B (mm)
E070600	Flat	10	22
E070602	Flat	12	22
E070604	Flat	14	22
E070606	33.7	10	22
E070612	33.7	12	22
E070618	33.7	14	22
E070624	42.4	10	22
E070630	42.4	12	22
E070636	42.4	14	22
E070642	42.4	16	25
E070648	48.3	12	22
E070654	48.3	14	22
E070660	48.3	16	25





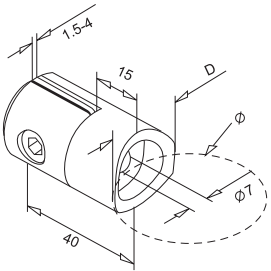
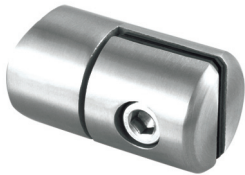
# BAR & SHEET HOLDERS

A.Material: Both AISI304 & AISI316 are available. AISI304 for indoor use; AISI316 for outdoor use.  
 B.Surface: Each item is available in either satin finish or mirror finish.



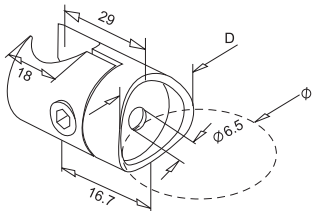
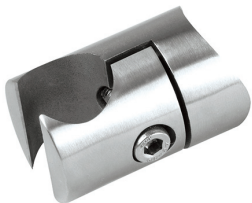
## SHEET HOLDER

Stock No.	Ø (mm)	D (mm)
J061100	Flat	25
J061134	33.7	25
J061142	42.4	25
J061148	48.3	25



## SHEET HOLDER

Stock No.	Ø (mm)	D (mm)
J061200	Flat	32
J061242	42.4	32

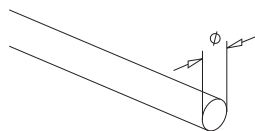


## TUBE-WALL CONNECTOR

Stock No.	Ø (mm)	D (mm)
J061800	Flat	28
J061842	42.4	28

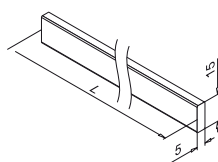
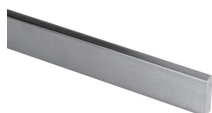
## BARS & TUBES

A.Material: Both AISI304 & AISI316 are available. AISI304 for indoor use; AISI316 for outdoor use.  
B.Surface: Each item is available in either satin finish or mirror finish.



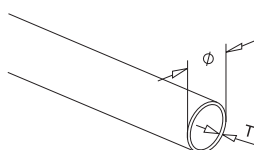
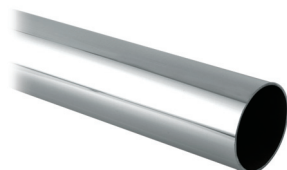
### BAR

Stock No.	Ø (mm)	L (mm)
J520110	10	2500
J520112	12	2500
J520114	14	2500
J520210	10	5000
J520212	12	5000
J520214	14	5000



### FLAT BAR 15X5MM

Stock No.	L (mm)
S650115	5000
S650215	2500

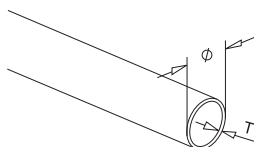
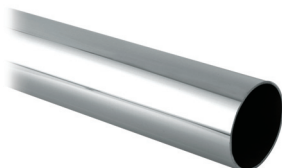


### TUBE

Stock No.	Ø×T (mm)	L (mm)
J540112	12.0×1.0	2500
J545112	12.0×1.5	2500
J540116	16.0×1.0	2500
J540134	33.7×2.0	2500
J540142	42.4×2.0	2500
J545142	42.4×2.6	2500
J540148	48.3×2.0	2500
J545148	48.3×2.6	2500
J540160	60.3×2.0	2500

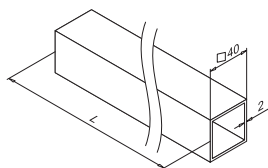
## BARS & TUBES

A.Material: Both AISI304 & AISI316 are available. AISI304 for indoor use; AISI316 for outdoor use.  
B.Surface: Each item is available in either satin finish or mirror finish.



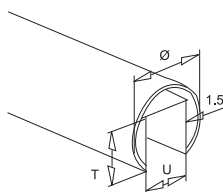
### TUBE

Stock No.	Ø×T (mm)	L (mm)
J540212	12.0×1.0	5000
J545212	12.0×1.5	5000
J540216	16.0×1.0	5000
J540234	33.7×2.0	5000
J540242	42.4×2.0	5000
J545242	42.4×2.6	5000
J540248	48.3×2.0	5000
J545248	48.3×2.6	5000
J540260	60.3×2.0	5000



### SQUARE TUBE 40X40X2.0MM

Stock No.	L (mm)
S610140	5000
S610240	2500

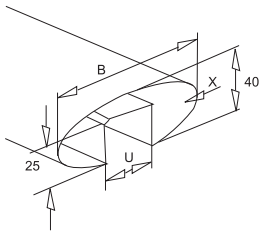


### SLOT TUBE--ROUND TYPE

Stock No.	Ø (mm)	U (mm)	T (mm)	L (mm)
J545325	25.4×1.5	14	14	2500
J540325	25.4×1.5	14	14	5000
J545342	42.4×1.5	24	24	2500
J545348	48.3×1.5	27	30	2500
J545360	60.3×1.5	34	34	2500
J540342	42.4×1.5	24	24	5000
J540348	48.3×1.5	27	30	5000
J540360	60.3×1.5	34	34	5000

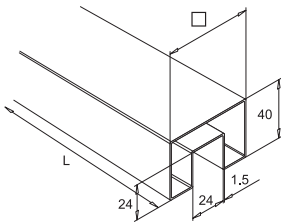
BARS & TUBES

A.Material: Both AISI304 & AISI316 are available. AISI304 for indoor use; AISI316 for outdoor use.  
B.Surface: Each item is available in either satin finish or mirror finish.



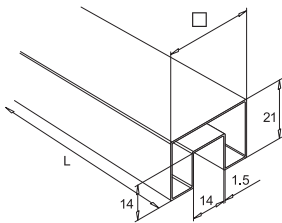
SLOT TUBE--OVAL TYPE

Stock No.	B (mm)	X (mm)	U (mm)	L (mm)
J545480	80	1.5	33	2500
J545488	110	1.5	33	2500
J540480	80	1.5	33	5000
J540488	110	1.5	33	5000



RECTANGULAR SLOT TUBE

Stock No.	□ (mm)	L (mm)
S640268	40	2500
S640264	60	2500
S640168	40	5000
S640164	60	5000



RECTANGULAR SLOT TUBE

Stock No.	□ (mm)	L (mm)
S640225	25	2500
S640125	25	5000

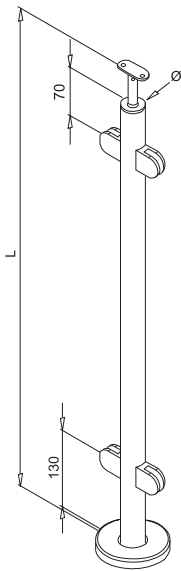


## COMBINED POST



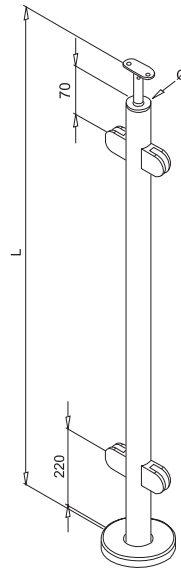
COMBINDE POST

Both AISI304 & AISI316 are available. AISI304 for indoor use; AISI316 for outdoor use.  
Each item is available in either satin finish or mirror finish.  
Can be made according to your drawing or other special requirements.

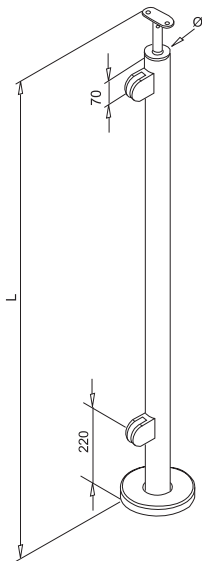


Stock No.	L (mm)	For Glass (mm)	Tube (mm)
JPG010142	960	6/8/10	42.4×2

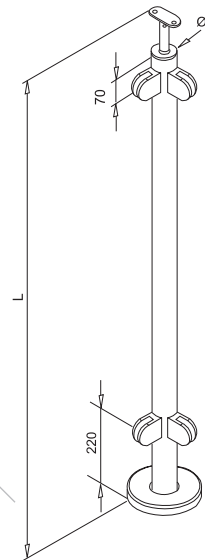
Stock No.	L (mm)	For Glass (mm)	Tube (mm)
JPG010342	1050	6/8/10	42.4×2



Stock No.	L (mm)	For Glass (mm)	Tube (mm)
JPG020342	1050	6/8/10	42.4×2



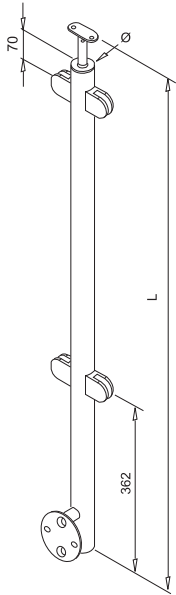
Stock No.	L (mm)	For Glass (mm)	Tube (mm)
JPG030342	1050	6/8/10	42.4×2





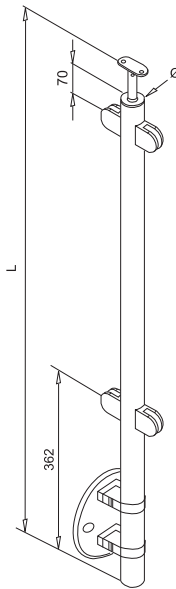
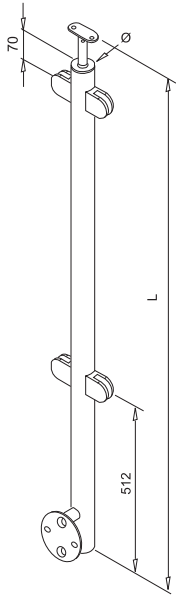
COMBINDE POST

Both AISI304 & AISI316 are available. AISI304 for indoor use; AISI316 for outdoor use.  
Each item is available in either satin finish or mirror finish.  
Can be made according to your drawing or other special requirements.



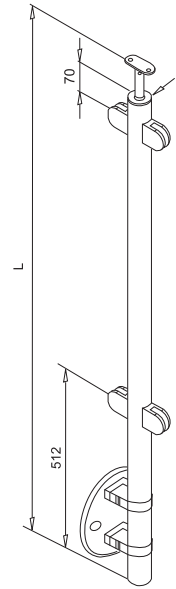
Stock No.	L (mm)	For Glass (mm)	Tube (mm)
JPG040442	1180	6/8/10	42.4×2

Stock No.	L (mm)	For Glass (mm)	Tube (mm)
JPG040542	1330	6/8/10	42.4×2



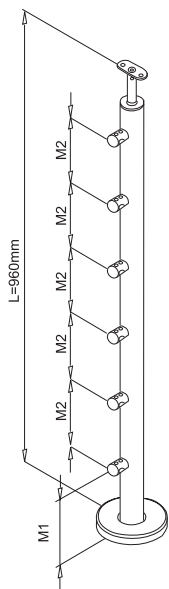
Stock No.	L (mm)	For Glass (mm)	Tube (mm)
JPG050442	1180	6/8/10	42.4×2

Stock No.	L (mm)	For Glass (mm)	Tube (mm)
JPG050542	1330	6/8/10	42.4×2



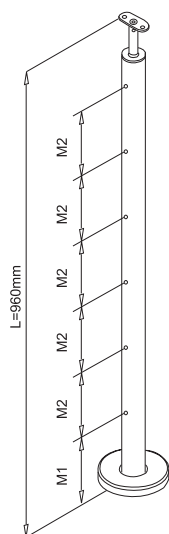
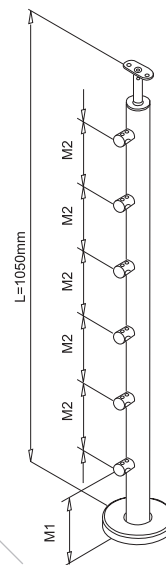
## COMBINDE POST

Both AISI304 & AISI316 are available. AISI304 for indoor use; AISI316 for outdoor use.  
Each item is available in either satin finish or mirror finish.  
Can be made according to your drawing or other special requirements.



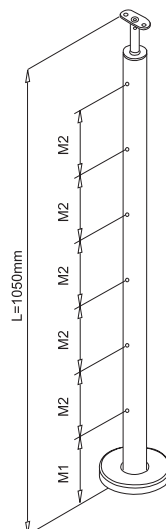
Stock No.	L (mm)	Bar Holder (size&qty)	Tube (mm)	M1 (mm)	M2 (mm)
JPB011542	960	Φ10mm×5	42.4×2	-	-
JPB011642	960	Φ10mm×6	42.4×2	-	-
JPB011742	960	Φ10mm×7	42.4×2	-	-
JPB021542	960	Φ12mm×5	42.4×2	-	-
JPB021642	960	Φ12mm×6	42.4×2	-	-
JPB021742	960	Φ12mm×7	42.4×2	-	-

Stock No.	L (mm)	Bar Holder (size&qty)	Tube (mm)	M1 (mm)	M2 (mm)
JPB013542	1050	Φ10mm×5	42.4×2	-	-
JPB013642	1050	Φ10mm×6	42.4×2	-	-
JPB013742	1050	Φ10mm×7	42.4×2	-	-
JPB023542	1050	Φ12mm×5	42.4×2	-	-
JPB023642	1050	Φ12mm×6	42.4×2	-	-
JPB023742	1050	Φ12mm×7	42.4×2	-	-



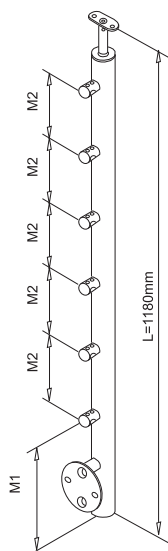
Stock No.	L (mm)	Bar Holder (size&qty)	Tube (mm)	M1 (mm)	M2 (mm)
JPA021542	960	Φ10mm×5	42.4×2	-	-
JPA021642	960	Φ10mm×6	42.4×2	-	-
JPA021742	960	Φ10mm×7	42.4×2	-	-
JPA031542	960	Φ12mm×5	42.4×2	-	-
JPA031642	960	Φ12mm×6	42.4×2	-	-
JPA031742	960	Φ12mm×7	42.4×2	-	-

Stock No.	L (mm)	Bar Holder (size&qty)	Tube (mm)	M1 (mm)	M2 (mm)
JPA023542	1050	Φ10mm×5	42.4×2	-	-
JPA023642	1050	Φ10mm×6	42.4×2	-	-
JPA023742	1050	Φ10mm×7	42.4×2	-	-
JPA033542	1050	Φ12mm×5	42.4×2	-	-
JPA033642	1050	Φ12mm×6	42.4×2	-	-
JPA033742	1050	Φ12mm×7	42.4×2	-	-



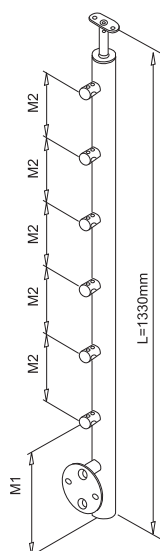
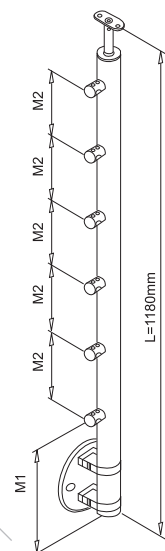
## COMBINDE POST

Both AISI304 & AISI316 are available. AISI304 for indoor use; AISI316 for outdoor use.  
Each item is available in either satin finish or mirror finish.  
Can be made according to your drawing or other special requirements.



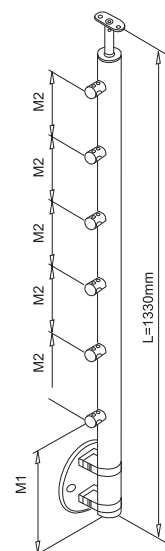
Stock No.	L (mm)	Bar Holder (size&qty)	Tube (mm)	M1 (mm)	M2 (mm)
JPB054542	1180	Φ10mm×5	42.4×2	-	-
JPB054642	1180	Φ10mm×6	42.4×2	-	-
JPB054742	1180	Φ10mm×7	42.4×2	-	-
JPB064542	1180	Φ12mm×5	42.4×2	-	-
JPB064642	1180	Φ12mm×6	42.4×2	-	-
JPB064742	1180	Φ12mm×7	42.4×2	-	-

Stock No.	L (mm)	Bar Holder (size&qty)	Tube (mm)	M1 (mm)	M2 (mm)
JPB094542	1180	Φ10mm×5	42.4×2	-	-
JPB094642	1180	Φ10mm×6	42.4×2	-	-
JPB094742	1180	Φ10mm×7	42.4×2	-	-
JPB104542	1180	Φ12mm×5	42.4×2	-	-
JPB104642	1180	Φ12mm×6	42.4×2	-	-
JPB104742	1180	Φ12mm×7	42.4×2	-	-



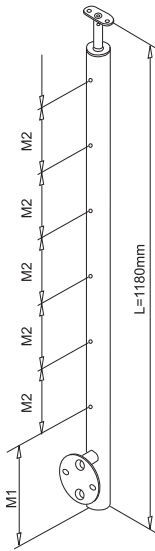
Stock No.	L (mm)	Bar Holder (size&qty)	Tube (mm)	M1 (mm)	M2 (mm)
JPB055542	1330	Φ10mm×5	42.4×2	-	-
JPB055642	1330	Φ10mm×6	42.4×2	-	-
JPB055742	1330	Φ10mm×7	42.4×2	-	-
JPB065542	1330	Φ12mm×5	42.4×2	-	-
JPB065642	1330	Φ12mm×6	42.4×2	-	-
JPB065742	1330	Φ12mm×7	42.4×2	-	-

Stock No.	L (mm)	Bar Holder (size&qty)	Tube (mm)	M1 (mm)	M2 (mm)
JPB095542	1330	Φ10mm×5	42.4×2	-	-
JPB095642	1330	Φ10mm×6	42.4×2	-	-
JPB095742	1330	Φ10mm×7	42.4×2	-	-
JPB105542	1330	Φ12mm×5	42.4×2	-	-
JPB105642	1330	Φ12mm×6	42.4×2	-	-
JPB105742	1330	Φ12mm×7	42.4×2	-	-



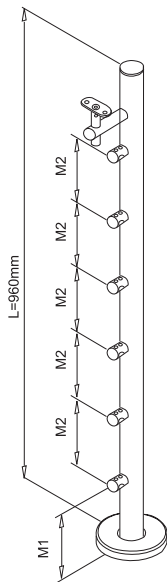
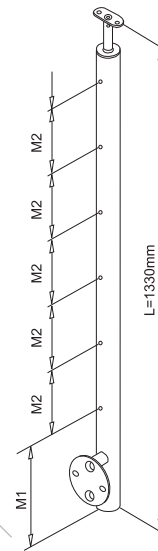
## COMBINDE POST

Both AISI304 & AISI316 are available. AISI304 for indoor use; AISI316 for outdoor use.  
Each item is available in either satin finish or mirror finish.  
Can be made according to your drawing or other special requirements.



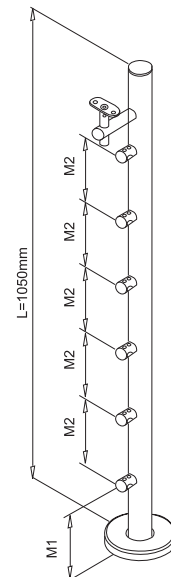
Stock No.	L (mm)	Bar Holder (size&qty)	Tube (mm)	M1 (mm)	M2 (mm)
JPA064542	1180	Φ10mm×5	42.4×2	-	-
JPA064642	1180	Φ10mm×6	42.4×2	-	-
JPA064742	1180	Φ10mm×7	42.4×2	-	-
JPA074542	1180	Φ12mm×5	42.4×2	-	-
JPA074642	1180	Φ12mm×6	42.4×2	-	-
JPA074742	1180	Φ12mm×7	42.4×2	-	-

Stock No.	L (mm)	Bar Holder (size&qty)	Tube (mm)	M1 (mm)	M2 (mm)
JPA065542	1330	Φ10mm×5	42.4×2	-	-
JPA065642	1330	Φ10mm×6	42.4×2	-	-
JPA065742	1330	Φ10mm×7	42.4×2	-	-
JPA075542	1330	Φ12mm×5	42.4×2	-	-
JPA075642	1330	Φ12mm×6	42.4×2	-	-
JPA075742	1330	Φ12mm×7	42.4×2	-	-



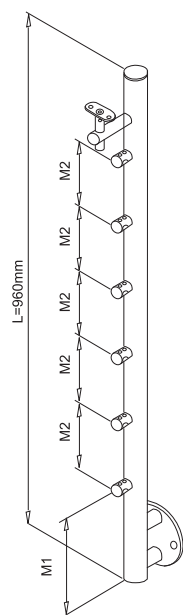
Stock No.	L (mm)	Bar Holder (size&qty)	Tube (mm)	M1 (mm)	M2 (mm)
JPH011542	960	Φ10mm×5	42.4×2	-	-
JPH011642	960	Φ10mm×6	42.4×2	-	-
JPH011742	960	Φ10mm×7	42.4×2	-	-
JPH021542	960	Φ12mm×5	42.4×2	-	-
JPH021642	960	Φ12mm×6	42.4×2	-	-
JPH021742	960	Φ12mm×7	42.4×2	-	-

Stock No.	L (mm)	Bar Holder (size&qty)	Tube (mm)	M1 (mm)	M2 (mm)
JPH013542	1050	Φ10mm×5	42.4×2	-	-
JPH013642	1050	Φ10mm×6	42.4×2	-	-
JPH013742	1050	Φ10mm×7	42.4×2	-	-
JPH023542	1050	Φ12mm×5	42.4×2	-	-
JPH023642	1050	Φ12mm×6	42.4×2	-	-
JPH023742	1050	Φ12mm×7	42.4×2	-	-



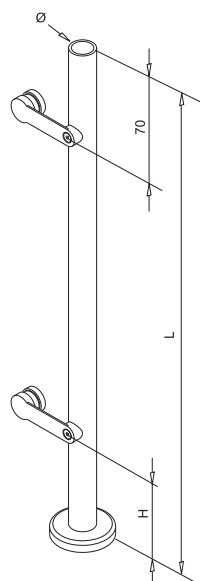
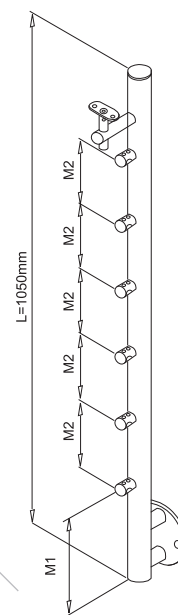
## COMBINDE POST

Both AISI304 & AISI316 are available. AISI304 for indoor use; AISI316 for outdoor use.  
Each item is available in either satin finish or mirror finish.  
Can be made according to your drawing or other special requirements.



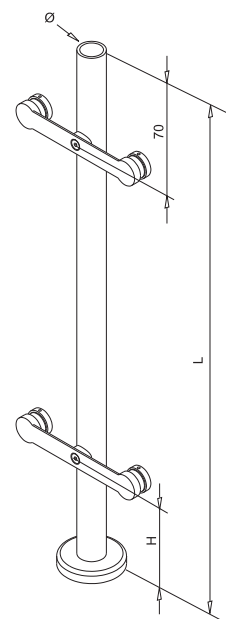
Stock No.	L (mm)	Bar Holder (size&qty)	Tube (mm)	M1 (mm)	M2 (mm)
JPH054542	960	Φ10mm×5	42.4×2	-	-
JPH054642	960	Φ10mm×6	42.4×2	-	-
JPH054742	960	Φ10mm×7	42.4×2	-	-
JPH064542	960	Φ12mm×5	42.4×2	-	-
JPH064642	960	Φ12mm×6	42.4×2	-	-
JPH064742	960	Φ12mm×7	42.4×2	-	-

Stock No.	L (mm)	Bar Holder (size&qty)	Tube (mm)	M1 (mm)	M2 (mm)
JPH055542	1050	Φ10mm×5	42.4×2	-	-
JPH055642	1050	Φ10mm×6	42.4×2	-	-
JPH055742	1050	Φ10mm×7	42.4×2	-	-
JPH065542	1050	Φ12mm×5	42.4×2	-	-
JPH065642	1050	Φ12mm×6	42.4×2	-	-
JPH065742	1050	Φ12mm×7	42.4×2	-	-



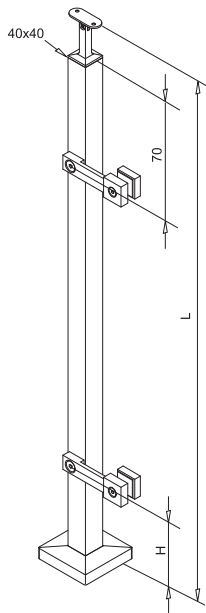
Stock No.	L (mm)	H (mm)	T (mm)	Ø (mm)
JPG010942	1050	220	8-13.52	42.4×2

Stock No.	L (mm)	H (mm)	T (mm)	Ø (mm)
JPG011042	960	130	8-13.52	42.4×2
JPG012042	1050	220	8-13.52	42.4×2



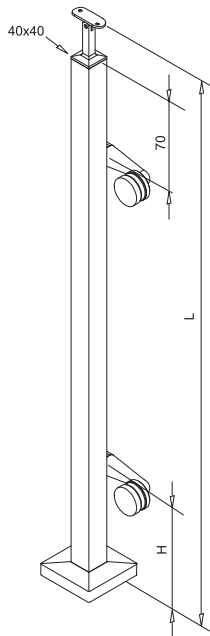
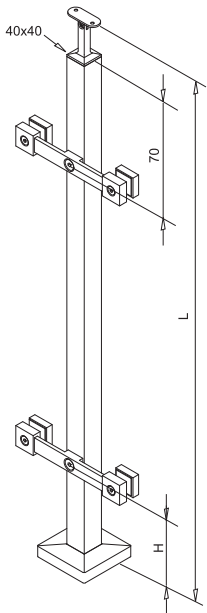
COMBINDE POST

Both AISI304 & AISI316 are available. AISI304 for indoor use; AISI316 for outdoor use.  
Each item is available in either satin finish or mirror finish.  
Can be made according to your drawing or other special requirements.



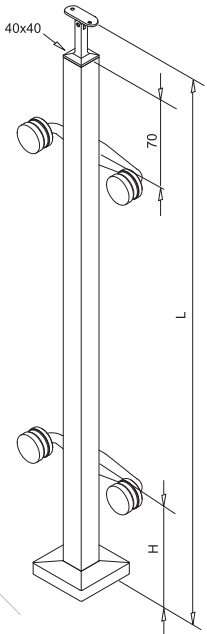
Stock No.	L (mm)	H (mm)	T (mm)
JPG020642	1050	220	8-13.52

Stock No.	L (mm)	H (mm)	T (mm)
JPG010642	960	130	8-13.52
JPG011642	1050	220	8-13.52



Stock No.	L (mm)	H (mm)	T (mm)
JPG020842	1050	220	8-13.52

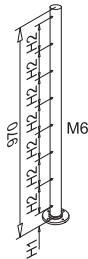
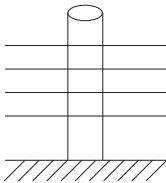
Stock No.	L (mm)	H (mm)	T (mm)
JPG010842	960	130	8-13.52
JPG011842	1050	220	8-13.52





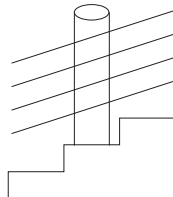
# COMBINDE POST

Both AISI304 & AISI316 are available. AISI304 for indoor use; AISI316 for outdoor use.  
Each item is available in either satin finish or mirror finish.  
Can be made according to your drawing or other special requirements.



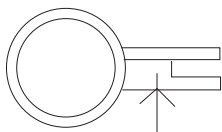
## POST WITH HOLE USED FOR BAR HOLDER

Stock No.	Ø (mm)	H1 (mm)	H2 (mm)
J581442	42.4×2.0	60	125
J581448	48.3×2.0	60	125



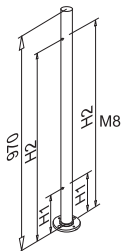
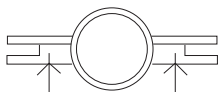
## POST WITH HOLE USED FOR BAR HOLDER

Stock No.	Ø (mm)	H1 (mm)	H2 (mm)
J581542	42.4×2.0	125	160
J581548	48.3×2.0	125	160



## POST WITH HOLE USED FOR GLASS CLAMP-ONE SIDE

Stock No.	Ø (mm)	H1 (mm)	H2 (mm)
J581642	42.4×2.0	175	850
J581648	48.3×2.0	175	850

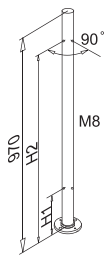
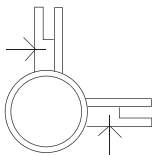


## POST WITH HOLE USED FOR GLASS CLAMP-180 DEGREE

Stock No.	Ø (mm)	H1 (mm)	H2 (mm)
J581742	42.4×2.0	175	850
J581748	48.3×2.0	175	850

PRE-DRILLED POST

Both AISI304 & AISI316 are available. AISI304 for indoor use; AISI316 for outdoor use.  
Each item is available in either satin finish or mirror finish.



POST WITH HOLE USED FOR GLASS  
CLAMP-90 DEGREE

Stock No.	Ø (mm)	H1 (mm)	H2 (mm)
J581842	42.4×2.0	175	850
J581848	48.3×2.0	175	850

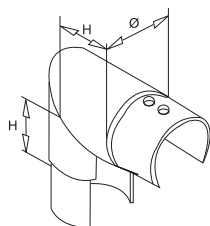


## SLOT TUBE FITTINGS



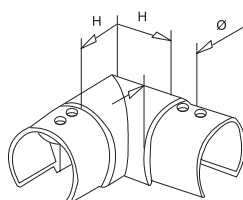
## SLOT TUBE FITTINGS

Both AISI304 & AISI316 are available. AISI304 for indoor use; AISI316 for outdoor use.  
Each item is available in either satin finish or mirror finish.



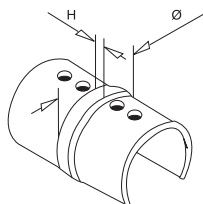
### 90 DEGREE ELBOW FOR ROUND SLOT TUBE-VERTICAL

Stock No.	Ø (mm)	H (mm)
J110142	42.4x1.5	30
J110148	48.3x1.5	35



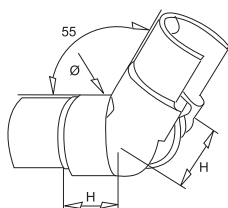
### 90 DEGREE ELBOW FOR ROUND SLOT TUBE-HORIZONTAL

Stock No.	Ø (mm)	H (mm)
J110242	42.4x1.5	30
J110248	48.3x1.5	35
J110260	60.3x1.5	40



### ROUND SLOT TUBE CONNECTOR

Stock No.	Ø (mm)	H (mm)
J110342	42.4x1.5	6
J110348	48.3x1.5	6
J110360	60.3x1.5	6

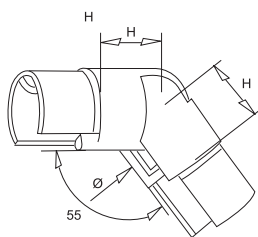


### 25-55 DEGREE ADJUSTABLE ELBOW FOR ROUND SLOT TUBE-UPWARDS

Stock No.	Ø (mm)	H (mm)
J110542	42.4x1.5	30
J110548	48.3x1.5	35

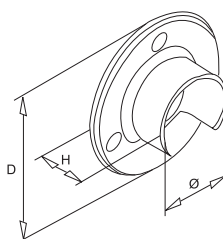
## SLOT TUBE FITTINGS

Both AISI304 & AISI316 are available. AISI304 for indoor use; AISI316 for outdoor use.  
Each item is available in either satin finish or mirror finish.



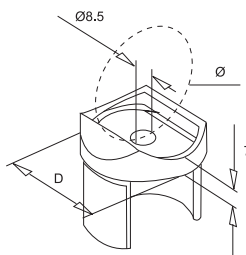
### 25-55 DEGREE ADJUSTABLE ELBOW FOR ROUND SLOT TUBE-DOWNWARDS

Stock No.	Ø (mm)	H (mm)
J110642	42.4x1.5	30
J110648	48.3x1.5	35



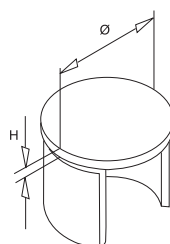
### ROUND BASE FOR SLOT TUBE

Stock No.	Ø (mm)	D (mm)	H (mm)
J120142	42.4	90	30
J120148	48.3	95	35



### ROUND SLOT TUBE SADDLE

Stock No.	Ø (mm)	D (mm)
J130142	42.4	42.4x1.5
J130148	48.3	42.4x1.5
J130248	48.3	48.3x1.5

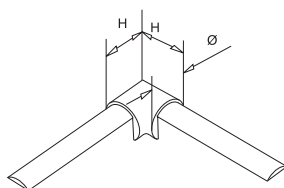


### FLAT END CAP FOR ROUND SLOT TUBE

Stock No.	Ø (mm)	H (mm)
J140142	42.4x1.5	4
J140148	48.3x1.5	4
J140160	60.3x1.5	4

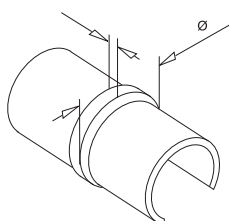
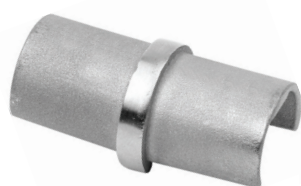
## SLOT TUBE FITTINGS

Both AISI304 & AISI316 are available. AISI304 for indoor use; AISI316 for outdoor use.  
Each item is available in either satin finish or mirror finish.



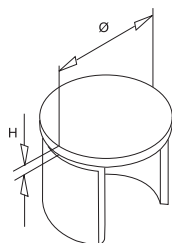
### 90 DEGREE ELBOW FOR ROUND SLOT TUBE-HORIZONTAL

Stock No.	Ø (mm)	H (mm)
J110225	25.4	30



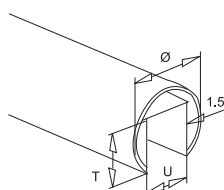
### ROUND SLOT TUBE CONNECTOR

Stock No.	Ø (mm)	H (mm)
J110325	25.4	5



### FLAT END CAP FOR ROUND SLOT TUBE

Stock No.	Ø (mm)	H (mm)
J140125	25.4	3

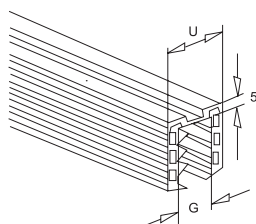


### SLOT TUBE--ROUND TYPE

Stock No.	Ø (mm)	U (mm)	T (mm)	L (mm)
J545325	25.4x1.5	14	14	2500
J540325	25.4x1.5	14	14	5000
J545342	42.4x1.5	24	24	2500
J545348	48.3x1.5	27	30	2500
J545360	60.3x1.5	34	34	2500
J540342	42.4x1.5	24	24	5000
J540348	48.3x1.5	27	30	5000
J540360	60.3x1.5	34	34	5000

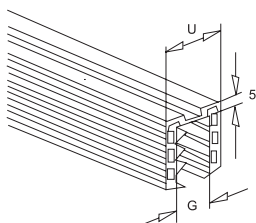


## SLOT TUBE FITTINGS



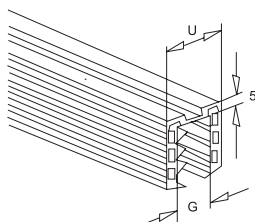
### RUBBER FOR ROUND SLOT TUBE--42.4x1.5mm

Stock No.	U (mm)	G (mm)
B1802990101	24	8-11
B1802990102	24	11.5-13.5
B1802990103	24	15
B1802990104	24	16-17.5
B1802990105	24	19
B1802990106	24	20-21.5



### RUBBER FOR ROUND SLOT TUBE--48.3x1.5mm

Stock No.	U (mm)	G (mm)
B1802990201	27	8-11
B1802990202	27	11.5-13.5
B1802990203	27	16-17.5
B1802990204	27	20-21.5
B1802990205	27	19
B1802990206	27	15

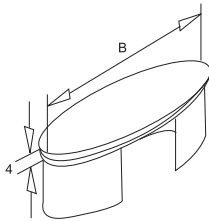


### RUBBER FOR ROUND SLOT TUBE--60.3x1.5mm

Stock No.	U (mm)	G (mm)
B1802990301	34	16-17.5
B1802990302	34	20-21.5

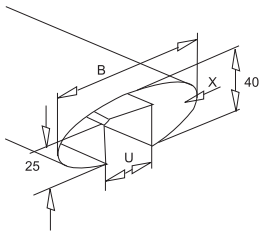
## SLOT TUBE FITTINGS

Both AISI304 & AISI316 are available. AISI304 for indoor use; AISI316 for outdoor use.  
Each item is available in either satin finish or mirror finish.



### FLAT END CAP FOR OVAL SLOT TUBE

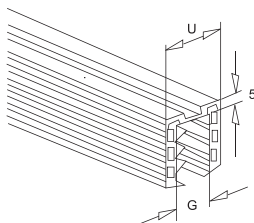
Stock No.	B (mm)
J140280	80X1.5



### SLOT TUBE-OVAL TYPE

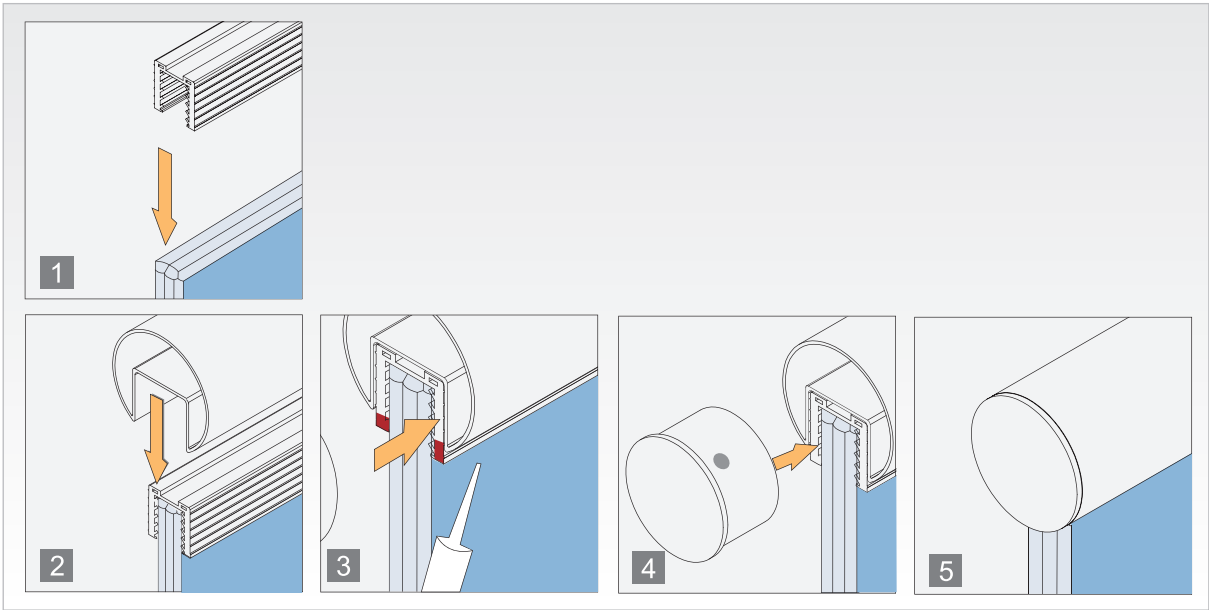
Stock No.	B (mm)	X (mm)	U (mm)	L (mm)
J545480	80	1.5	33	2500
J545488	110	1.5	33	2500
J540480	80	1.5	33	5000
J540488	110	1.5	33	5000

# SLOT TUBE FITTINGS



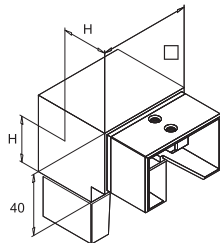
## RUBBER FOR OVAL SLOT TUBE

Stock No.	U (mm)	G (mm)
B1802990401	33	8-11
B1802990402	33	11.5-13.5
B1802990403	33	16-17.5
B1802990404	33	20-21.5



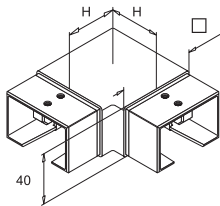
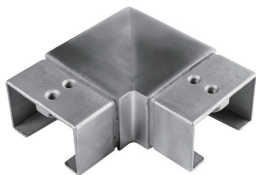
# SLOT TUBE FITTINGS

Both AISI304 & AISI316 are available. AISI304 for indoor use; AISI316 for outdoor use.  
Each item is available in either satin finish or mirror finish.



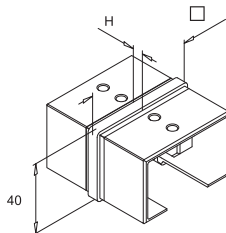
## 90° ELBOW FOR RECTANGULAR SLOT TUBE-VERTICAL

Stock No.	□ (mm)	H (mm)
S310268	40	30
S310264	60	30



## 90 DEGREE ELBOW FOR RECTANGULAR SLOT TUBE-HORIZONTAL

Stock No.	□ (mm)	H (mm)
S310168	40	40
S310164	60	40

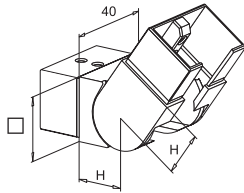
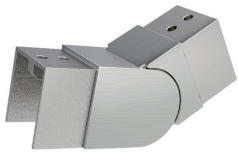


## CONNECTOR FOR RECTANGULAR SLOT TUBE

Stock No.	□ (mm)	H (mm)
S310368	40	4
S310364	60	6

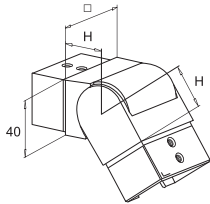
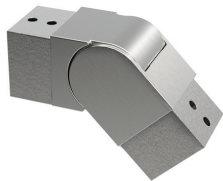
# SLOT TUBE FITTINGS

Both AISI304 & AISI316 are available. AISI304 for indoor use; AISI316 for outdoor use.  
Each item is available in either satin finish or mirror finish.



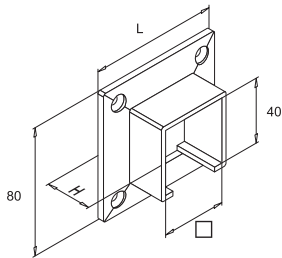
## ADJUSTABLE ELBOW FOR RECTANGULAR SLOT TUBE-UPWARDS

Stock No.	□ (mm)	H (mm)
S310568	40	30
S310564	60	30



## ADJUSTABLE ELBOW FOR RECTANGULAR SLOT TUBE-DOWNWARDS

Stock No.	□ (mm)	H (mm)
S310668	40	30
S310664	60	30

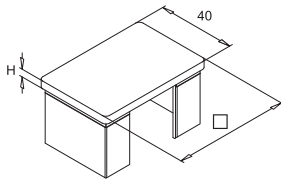


## SQUARE BASE FOR RECTANGULAR SLOT TUBE

Stock No.	□ (mm)	H (mm)	L (mm)
S320168	40	29	80
S320164	60	30	100

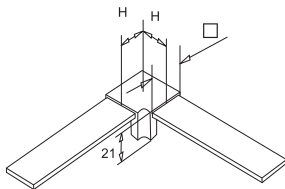
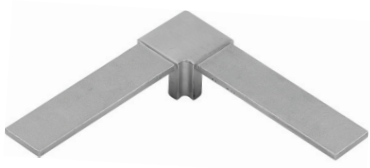
SLOT TUBE FITTINGS

Both AISI304 & AISI316 are available. AISI304 for indoor use; AISI316 for outdoor use.  
Each item is available in either satin finish or mirror finish.



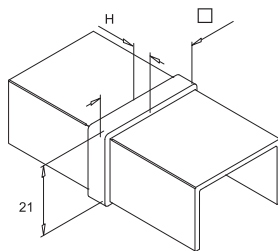
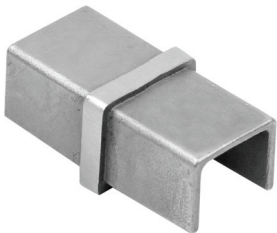
FLAT END CAP FOR RECTANGULAR SLOT TUBE

Stock No.	□ (mm)	H (mm)
S340168	40	4
S340164	60	4



90 DEGREE ELBOW FOR RECTANGULAR SLOT TUBE-HORIZONTAL

Stock No.	□ (mm)	H (mm)
S310125	25	17.8



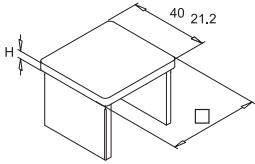
CONNECTOR FOR RECTANGULAR SLOT TUBE

Stock No.	□ (mm)	H (mm)
S310325	25	5



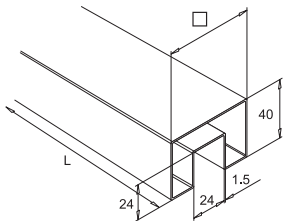
SLOT TUBE FITTINGS

Both AISI304 & AISI316 are available. AISI304 for indoor use; AISI316 for outdoor use.  
Each item is available in either satin finish or mirror finish.



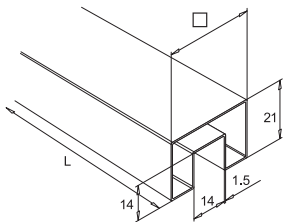
FLAT END CAP FOR RECTANGULAR SLOT TUBE

Stock No.	□ (mm)	H (mm)
S340125	25.4	3



RECTANGULAR SLOT TUBE

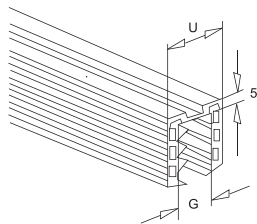
Stock No.	□ (mm)	L (mm)
S640268	40	2500
S640264	60	2500
S640168	40	5000
S640164	60	5000



RECTANGULAR SLOT TUBE

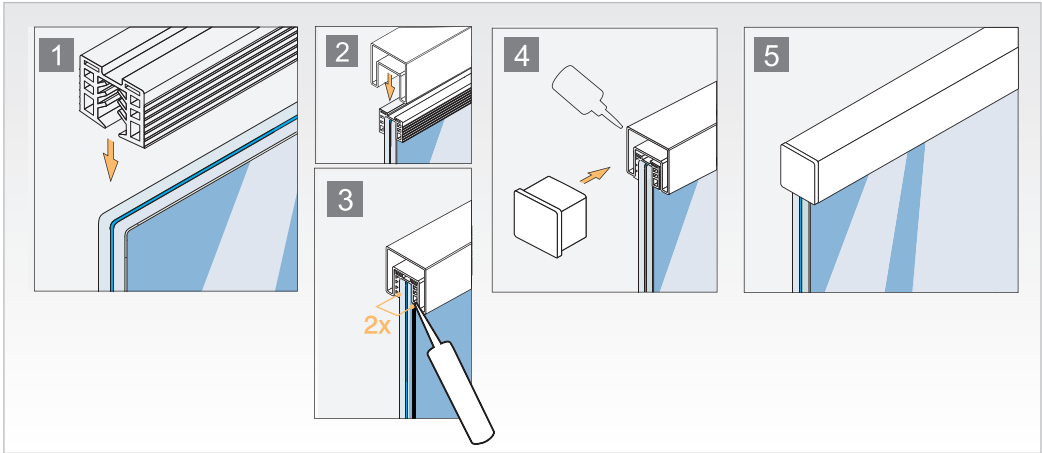
Stock No.	□ (mm)	L (mm)
S640225	25	2500
S640125	25	5000

SLOT TUBE FITTINGS



RUBBER FOR ROUND SLOT TUBE—42.4x1.5mm

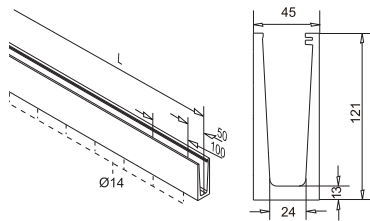
Stock No.	U (mm)	G (mm)
B1802990101	24	8-11
B1802990102	24	11.5-13.5
B1802990103	24	15
B1802990104	24	16-17.5
B1802990105	24	19
B1802990106	24	20-21.5





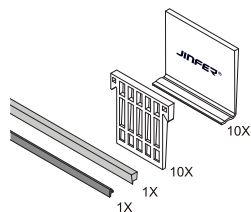
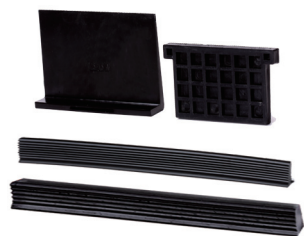
## GLASS CHANNEDL-EnF

GLASS CHANNEL-EnF



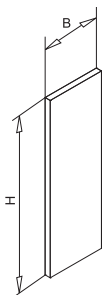
Stock No.	L (mm)	Material
A30000	2500	Aluminium

Max. Load: 0.5 KN for 12-17.52mm Glass  
1.0 KN for 16.76-21.52mm Glass



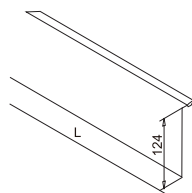
RUBBER SET

Stock No.	T (mm)
A34012	12.76
A34014	13.52
A34015	15
A34017	16.76
A34018	17.52
A34019	19
A34021	20.76
A34022	21.52



END CAP

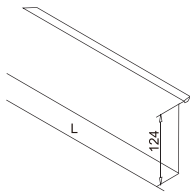
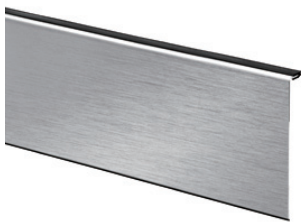
Stock No.	H (mm)	B (mm)	Material
A36000	121	45	316



CLADDING-FRONT

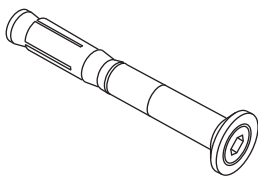
Stock No.	L (mm)	Material
A37000	2500	316

GLASS CHANNEL-EnF



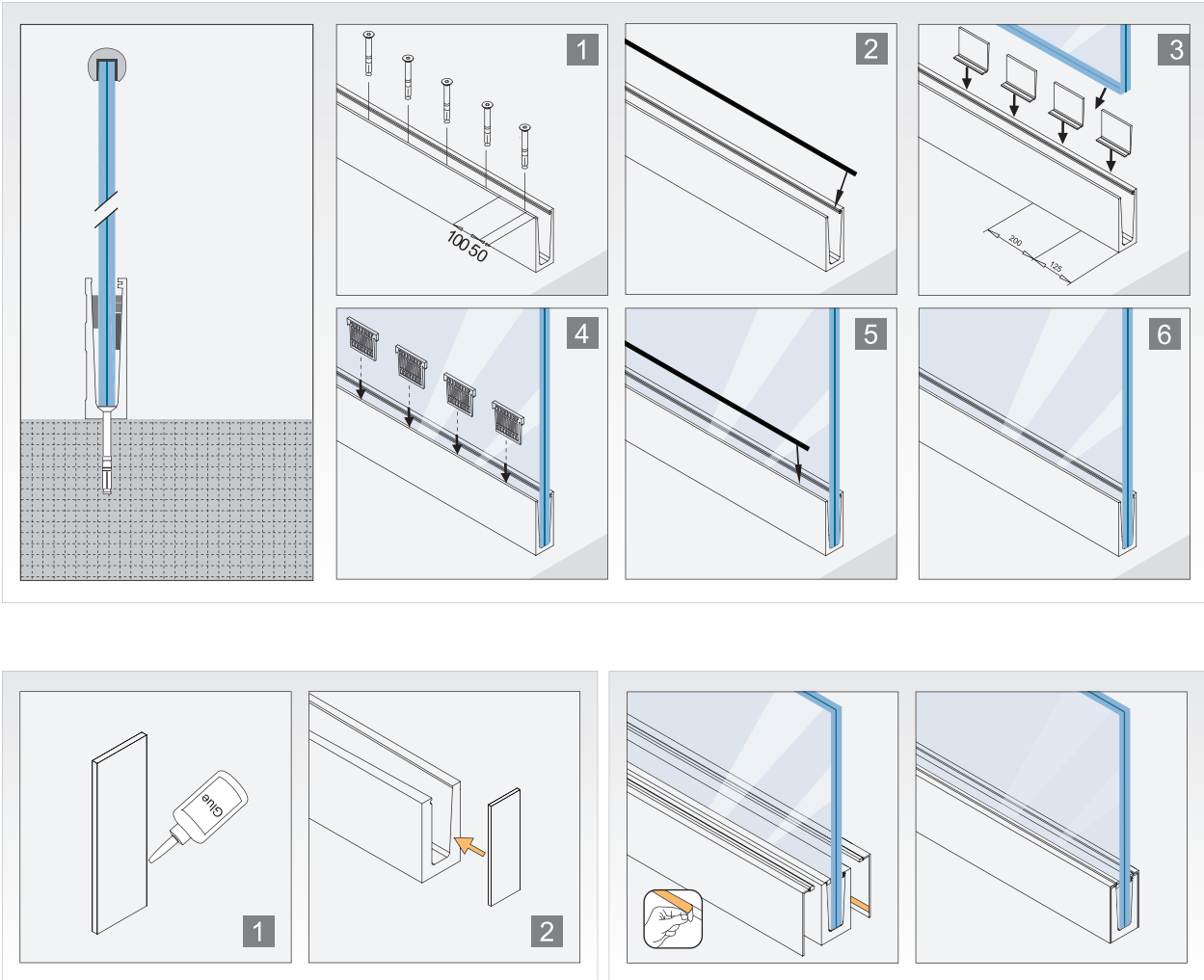
CLADDING-BACK

Stock No.	T (mm)	L (mm)	Material
A37012	12	2500	316
A37013	12.76-13.52	2500	316
A37015	15	2500	316
A37017	16.76-17.52	2500	316
A37019	19	2500	316
A37021	20.76-21.52	2500	316

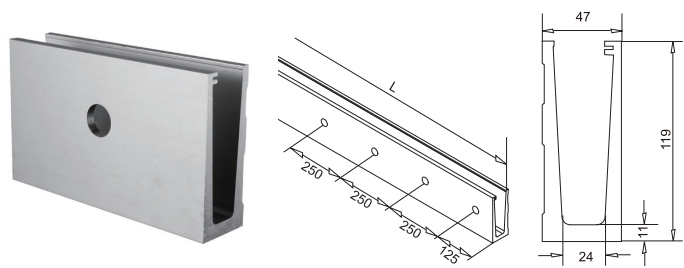


EXPANSION ANCHOR BOLT

Stock No.	Material
F033908	HDG/316 /304

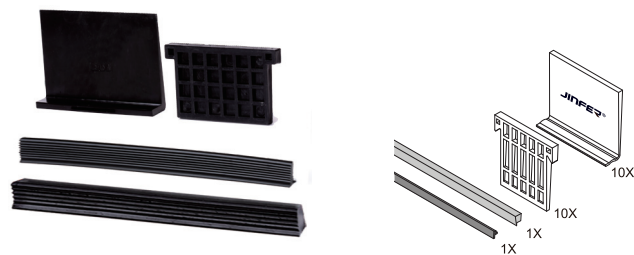


GLASS CHANNEL-EnF



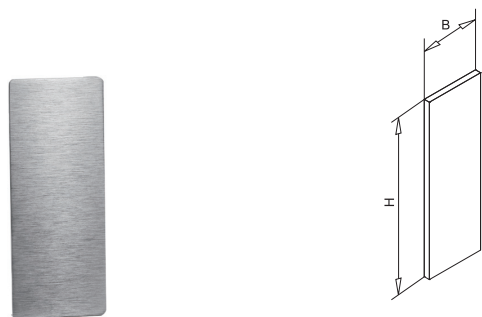
Stock No.	L (mm)	Material
A30100	2500	Aluminium

Max. Load: 0.5 KN for 12-17.52mm Glass  
1.0 KN for 16.76-21.52mm Glass



RUBBER SET

Stock No.	T (mm)
A34012	12.76
A34014	13.52
A34015	15
A34017	16.76
A34018	17.52
A34019	19
A34021	20.76
A34022	21.52



END CAP

Stock No.	H (mm)	B (mm)	Material
A36100	119	47	316

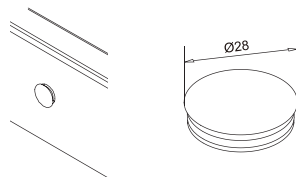


CLADDING

Stock No.	L (mm)	Material
A37100	2500	316

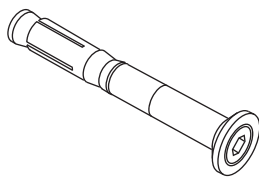


GLASS CHANNEL-EnF



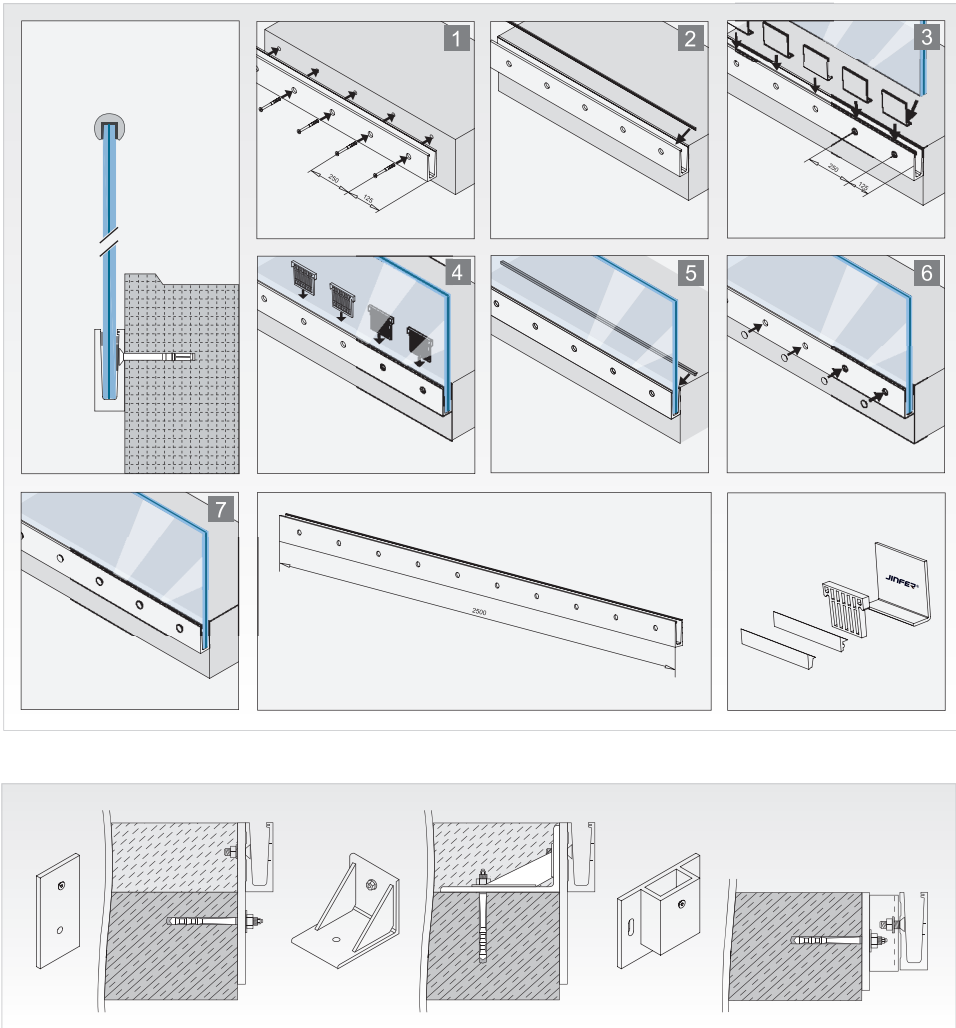
BLIND PLUG

Stock No.	Ø (mm)	Material
A39000	34	ABS

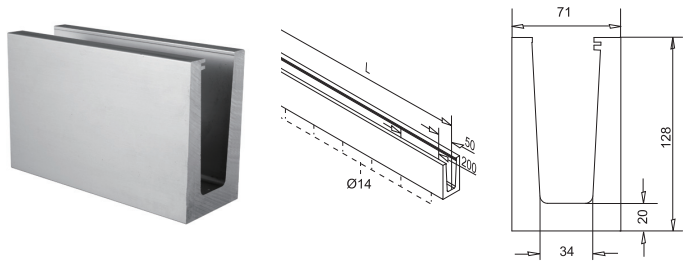


EXPANSION ANCHOR BOLT

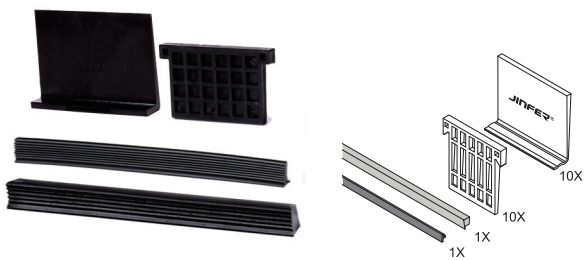
Stock No.	Material
F033908	HDG/316 /304



GLASS CHANNEL-EnF



Stock No.	L (mm)	Material
A30001	2500	Aluminium
Max. Load: 2.0 KN for 19-31.52mm Glass 3.0 KN for 30.76-31.52mm Glass		



RUBBER SET

Stock No.	T (mm)
A34119	19
A34121	20.76
A34122	21.52
A34124	24.76
A34125	25
A34126	25.52
A34132	31.52



END CAP

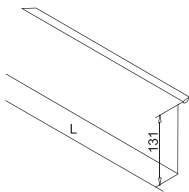
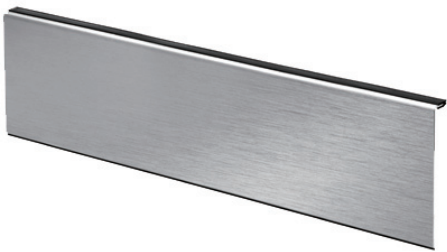
Stock No.	H (mm)	B (mm)	Material
A36002	128	71	316



CLADDING-FRONT

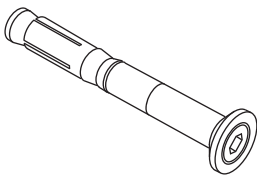
Stock No.	L (mm)	Material
A37200	2500	316

GLASS CHANNEL-EnF



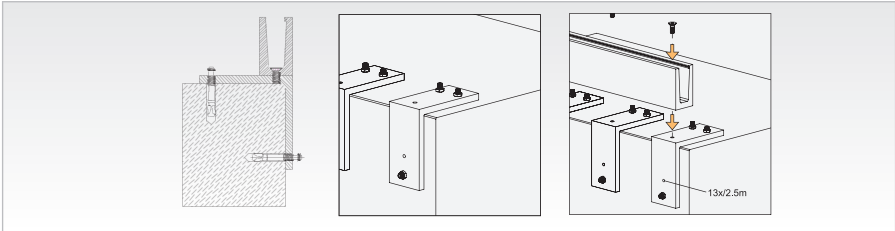
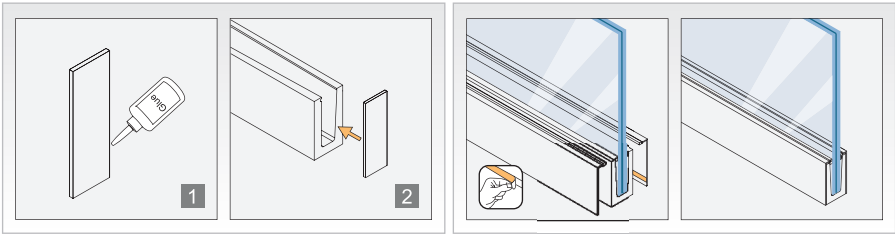
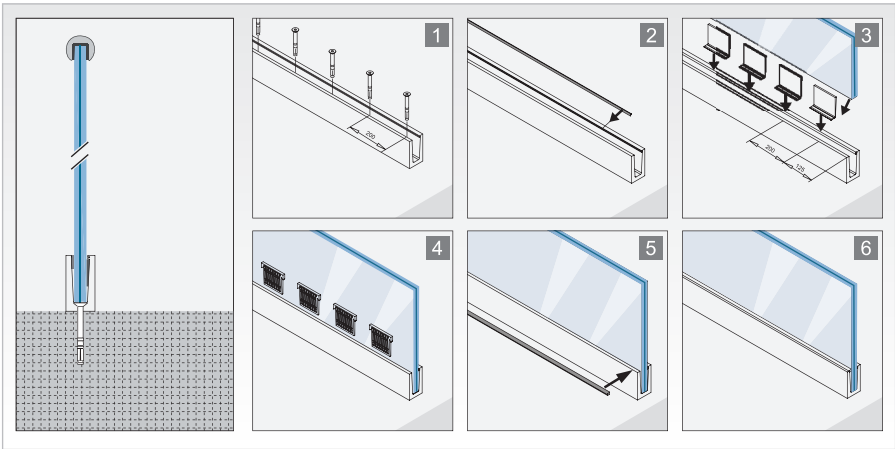
CLADDING-BACK

Stock No.	T (mm)	L (mm)	Material
A37219	19	2500	316
A37221	20.76-21.52	2500	316
A37225	24.76-25.52	2500	316
A37232	31.52	2500	316

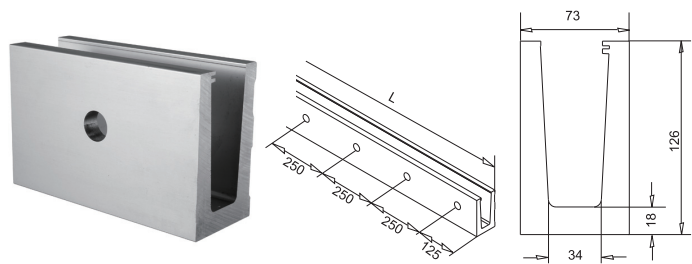


EXPANSION ANCHOR BOLT

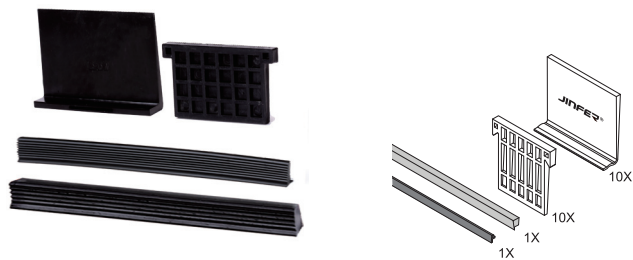
Stock No.	Material
F033908	HDG/316 /304



GLASS CHANNEL-EnF



Stock No.	L (mm)	Material
A30101	2500	Aluminium
Max. Load: 2.0 KN for 19-31.52mm Glass 3.0 KN for 30.76-31.52mm Glass		



RUBBER SET

Stock No.	T (mm)
A34119	19
A34124	24.76
A34125	25
A34126	25.52
A34132	31.52



END CAP

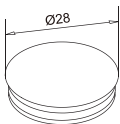
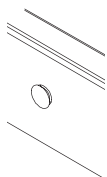
Stock No.	H (mm)	B (mm)	Material
A36102	126	73	316



CLADDING

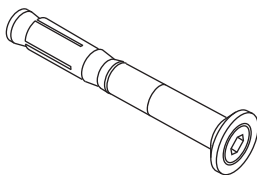
Stock No.	L (mm)	Material
A37101	2500	316

GLASS CHANNEL-EnF



BLIND PLUG

Stock No.	Ø (mm)	Material
A39000	34	ABS

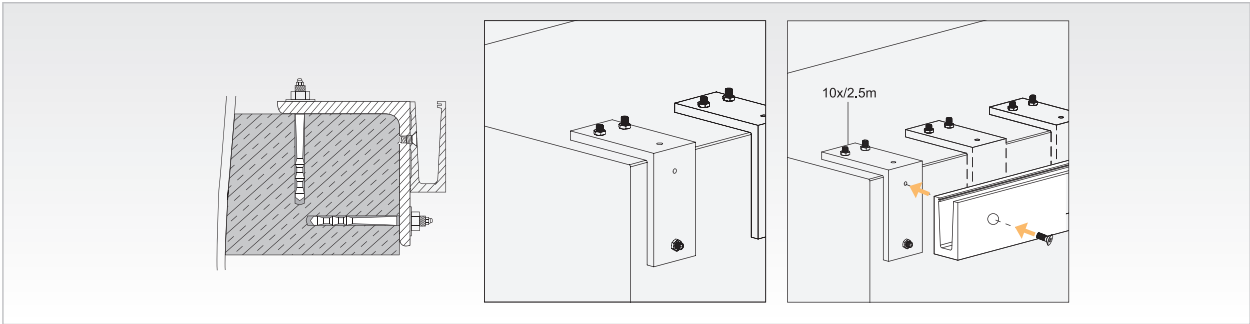
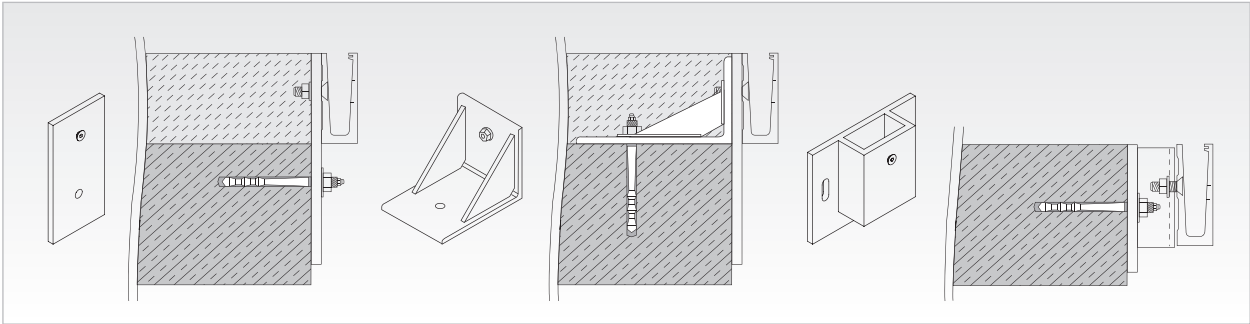
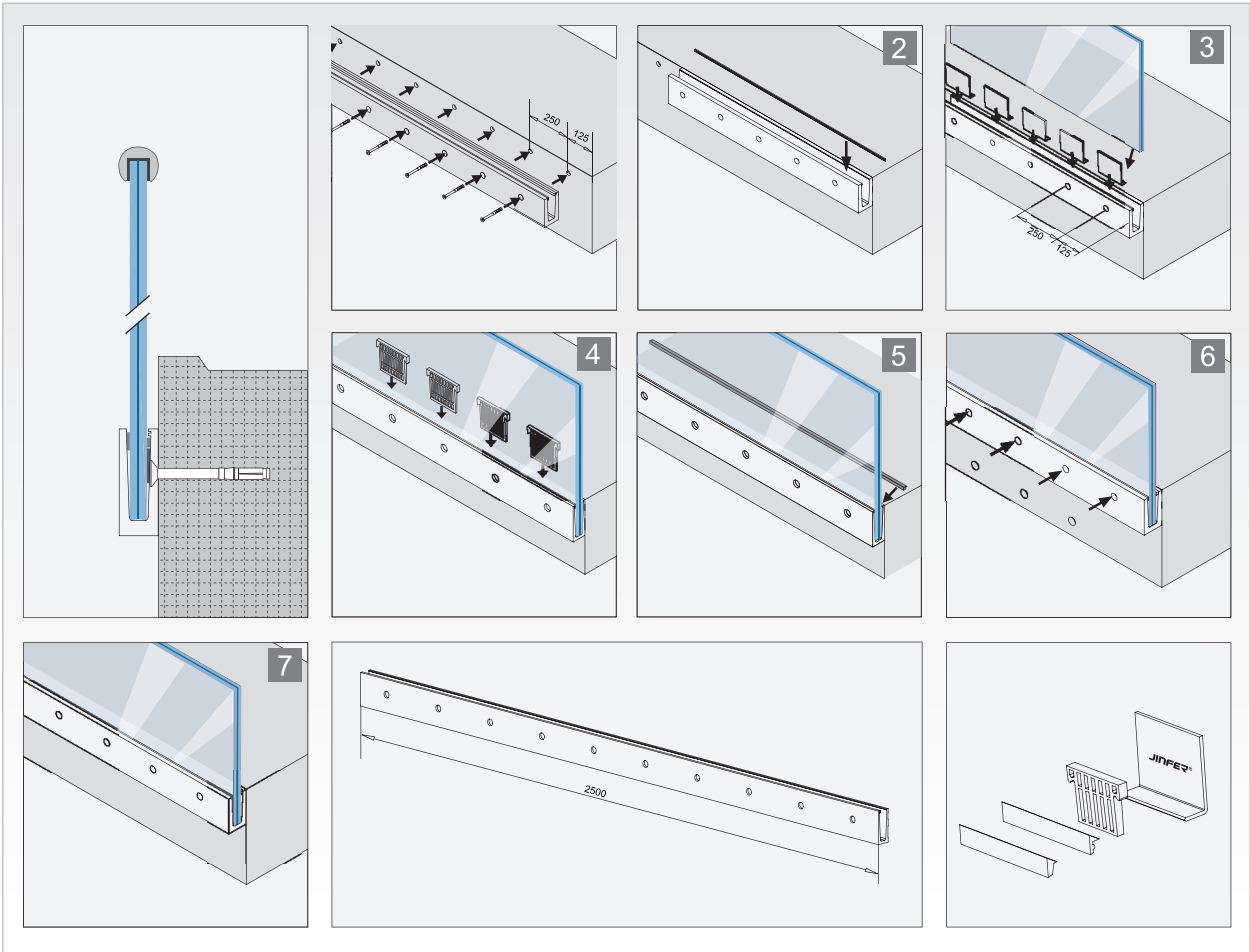


EXPANSION ANCHOR BOLT

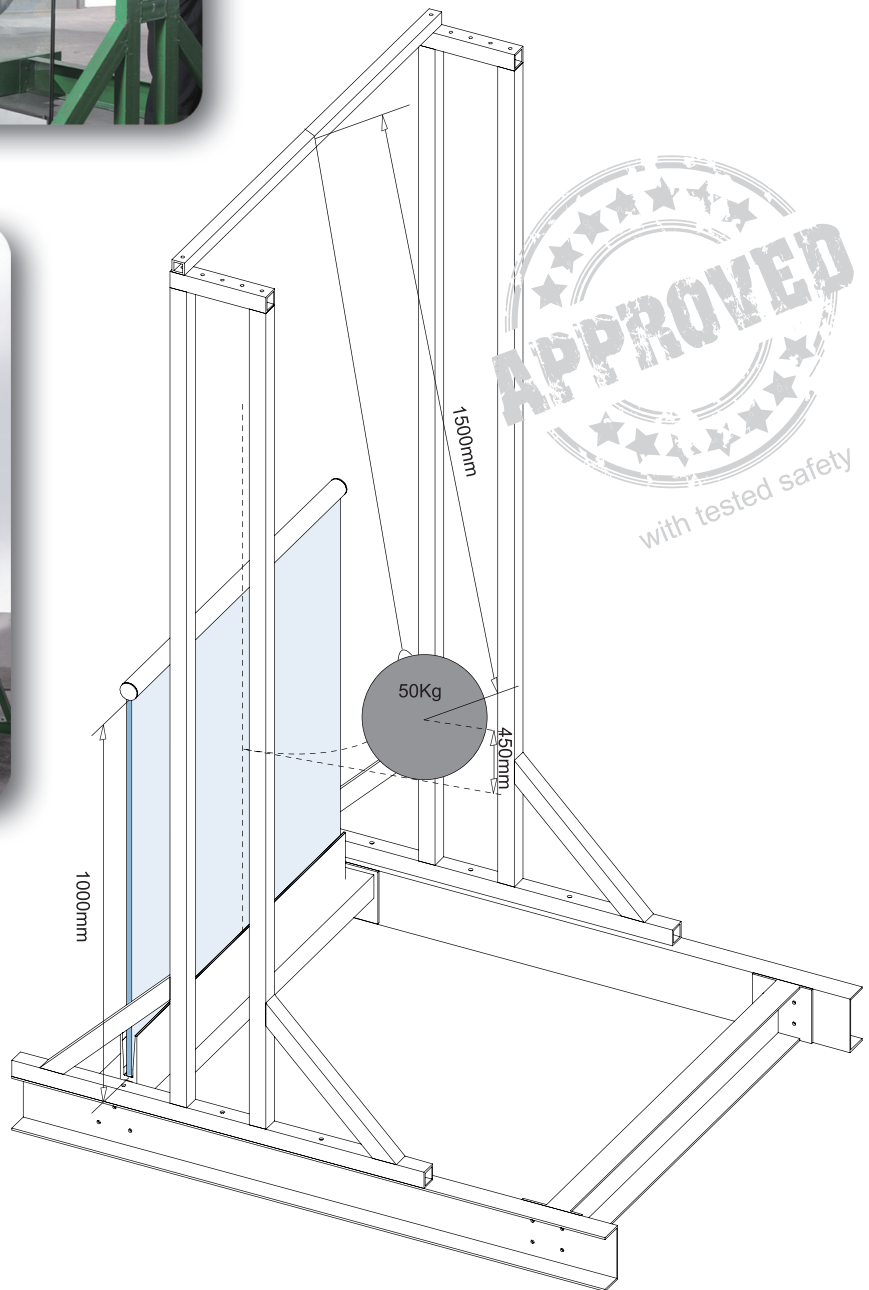
Stock No.	Material
F033908	HDG/316 /304



GLASS CHANNEL-EnF



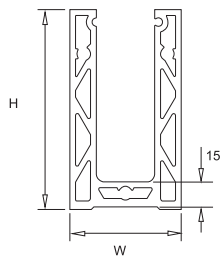




EN12600

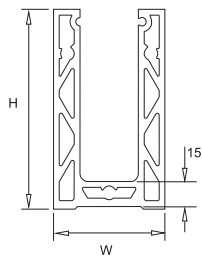
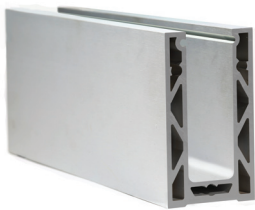
GLASS IN BUILDING -PENDULUM TEST - IMPACT TEST METHOD

GLASS CHANNEL-NEW



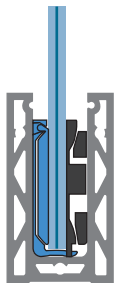
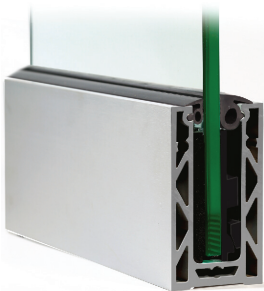
HOLLOW STYLE CHANNEL - GROUND

Stock No.	Glass (mm)	H (mm)	W (mm)	Material
A30014	12-16.76	120	67	Aluminium
A30015	17.52-21.52	122	72	Aluminium



HOLLOW STYLE CHANNEL - WALL SIDE

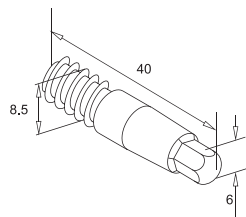
Stock No.	Glass (mm)	H (mm)	W (mm)	Material
A30114	12-16.76	120	67	Aluminium
A30115	17.52-21.52	122	72	Aluminium



ANGLE ADJUSTABLE CLAMPING SET

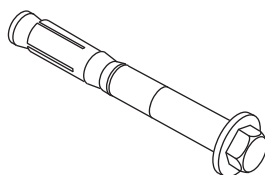
Stock No.	Glass (mm)	Channel Stock No.	PACK
A340612	12 -13.52	A30014 / A30114	10pcs/2500mm
A340615	15 -17.52	A30014 / A30114	10pcs/2500mm
A340612	16.76-17.52	A30015 / A30115	10pcs/2500mm
A340615	19 -21.52	A30015 / A30115	10pcs/2500mm

GLASS CHANNEL-NEW



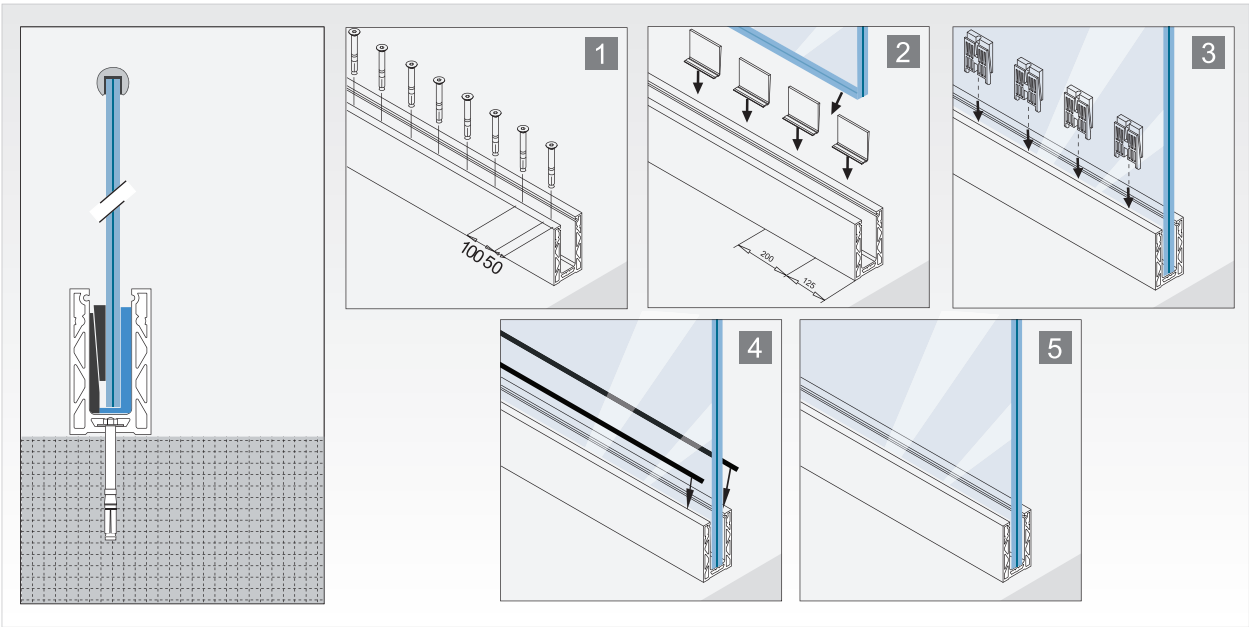
CONNECTING PIN

Stock No.	PACK (mm)
F030840	3pcs/side



EXPANSION ANCHOR BOLT

Stock No.	Material
F033008	HDG/316 /304



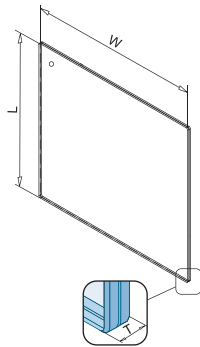
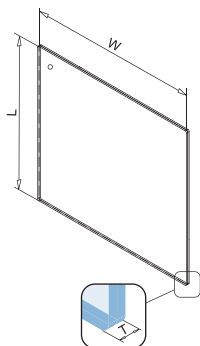
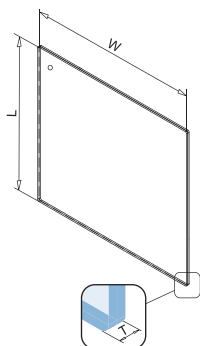
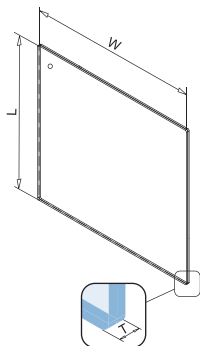


GLASS



GLASS

Sizes according to your request.



HEAT STRENGTHENED GLASS

Stock No.	T (mm)
TVG3006	6
TVG3008	8
TVG3010	10
TVG3012	12
TVG3015	15
TVG3019	19
TVG3022	22

TEMPERED GLASS

Stock No.	T (mm)
ESG0006	6
ESG0008	8
ESG0010	10
ESG0012	12
ESG0015	15
ESG0019	19
ESG0022	22

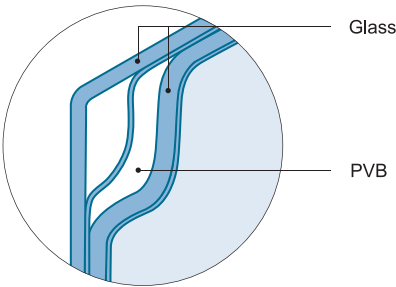
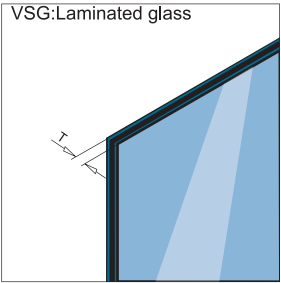
HEAT SOAKED TEMPERED GLASS

Stock No.	T (mm)
ESG-H1006	6
ESG-H1008	8
ESG-H1010	10
ESG-H1012	12
ESG-H1015	15
ESG-H1019	19
ESG-H1022	22

LAMINATED AND TEMPERED GLASS

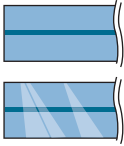
Stock No.	T (mm)
VSG2009	8.76
VSG2011	10.76
VSG2013	12.76
VSG2017	16.76
VSG2018	17.52
VSG2022	21.52
VSG2026	25.52

# GLASS



- PVB001
- PVB002
- PVB003
- PVB004
- PVB005
- PVB006
- PVB007
- PVB008
- PVB009

Both grinded edge and polished edge are available



Both square corner and round corner are available

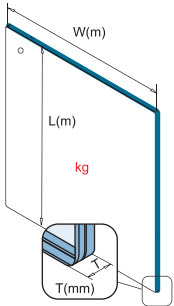


## Calculation

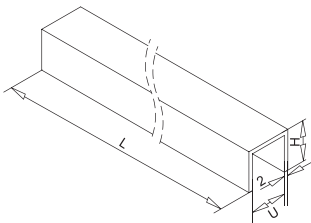
$$L(m) \times W(m) \times 2.5 \times T(mm) = Kg$$

Example

L	W	T
1.1m	1.0m	17.52mm
1.1x1.0x2.5x17.52=48.18Kg		



## Customized



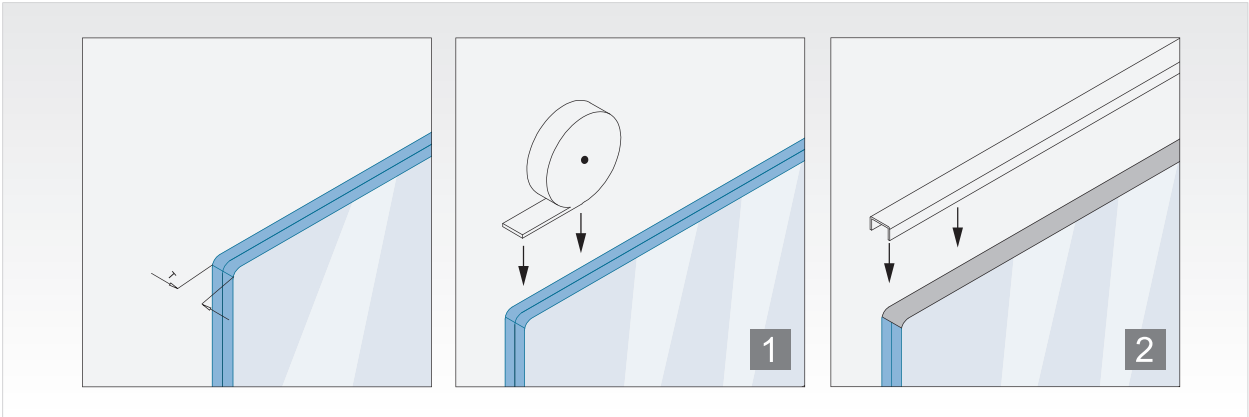
## ALUMINIUM GLASS PROFILE

Stock No.	T (mm)	U (mm)	H (mm)	L (mm)	Material
S645564	12.76	13.25	15	2500	Aluminium
S645664	16.76-17.52	18	20	2500	Aluminium
S645764	21.52	22	20	2500	Aluminium
S640564	12.76	13.25	15	5000	Aluminium
S640664	16.76-17.52	18	20	5000	Aluminium
S640764	21.52	22	20	5000	Aluminium



## GLASS TAKING TOOL

Stock No.	For Glass ( T ) (mm)
T0202	6 - 21.5





## SAFETY OF CREEK GLASS CLAMP



- **BAUART  
GEPRÜFT**
- **TYPE  
APPROVED**

In modern architecture, stainless steel and glass construction is becoming more and more popular. If complies with the requested safety standard even a material as fragile as glass can meet today's strict building code requirements.

To ensure Jinfer glass clamps are secure and meet the impact safety standard requested by DIN/EN 12600, we cooperate with TÜV Rheinland Co.Ltd for tests. The quality and safety are approved and we are authorized to use the TÜV mark.

### Test 1

F(ver): Maximum permittable vertical force for four glass clamps(without security pin)

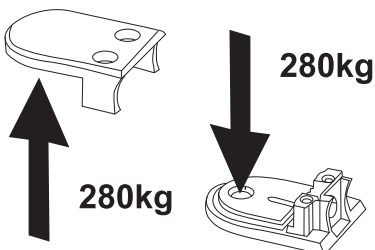
F(hor): Maximum permittable horizontal force for 4 glass clamps



### Test 2

When glass is being used in balustrading, staircases or other similar constructions, safety is an important matter when it comes to the combination glass and glass clamps.

According to these rules, the glass clamps must resist a horizontal minimum force of 280kg.

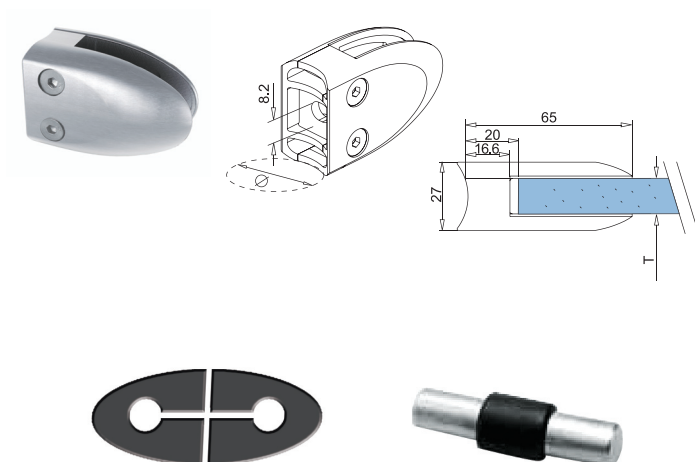


## GLASS CLAMPS



## GLASS CLAMPS

Both AISI304 & AISI316 are available. AISI304 for indoor use; AISI316 for outdoor use.  
Each item is available in either satin finish or mirror finish.



### GLASS CLAMP - MIDDLE D WIDE TYPE

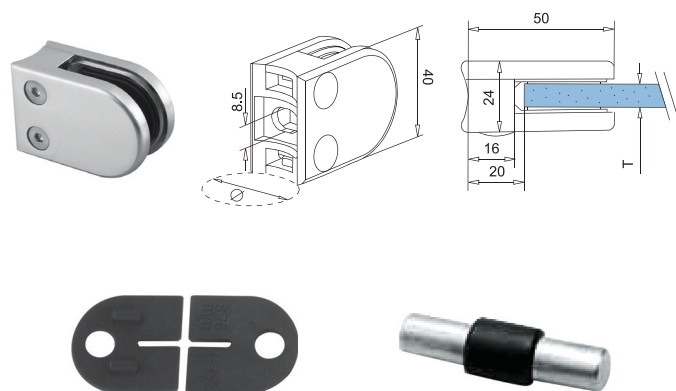
Stock No.	T (mm)	Ø (mm)
G420000	10.76 / 12 / 12.76 / 11.52	Square/Flat
G420042	10.76 / 12 / 12.76 / 11.52	42.4

### RUBBER GASKET

Stock No.	T (mm)
G420010	10
G420011	10.76(5-0.76-5)
G420013	12.76(6-0.76-6)

### PIN

Stock.No.	Material
G910020	Stainless Steel



### GLASS CLAMP - SMALL D TYPE

Stock No.	T (mm)	Ø (mm)
G600000	6 / 6.76 / 8	Square/Flat
G600034	6 / 6.76 / 8	33.7
G600042	6 / 6.76 / 8	42.4

### RUBBER GASKET

Stock No.	T (mm)
G600006	6
G600007	6.76(3-0.76-3)
G600008	8

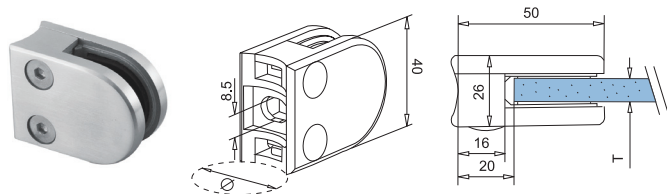
### PIN

Stock.No.	Material
G910017	Stainless Steel



## GLASS CLAMPS

Both AISI304 & AISI316 are available. AISI304 for indoor use; AISI316 for outdoor use.  
Each item is available in either satin finish or mirror finish.



### GLASS CLAMP - SMALL D WIDE TYPE

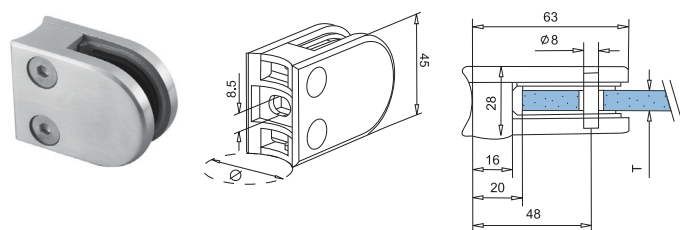
Stock No.	T (mm)	Ø (mm)
G630000	6 / 8 / 10	Square/Flat
G630034	6 / 8 / 10	33.7
G630042	6 / 8 / 10	42.4

### RUBBER GASKET

Stock No.	T (mm)
G630006	6
G630008	8
G630010	10

### PIN

Stock No.	Material
G910020	Stainless Steel



### GLASS CLAMP - MIDDLE D TYPE

Stock No.	T (mm)	Ø (mm)
G620000	6 / 6.76 / 8 / 8.76 / 10 / 9.52	Square/Flat
G620042	6 / 6.76 / 8 / 8.76 / 10 / 9.52	42.4
G620048	6 / 6.76 / 8 / 8.76 / 10 / 9.52	48.3

### RUBBER GASKET

Stock No.	T (mm)
G620006	6
G620007	6.76(3-0.76-3)
G620008	8
G620009	8.76(4-0.76-4)
G620010	10
G620045	9.52(4-1.52-4)

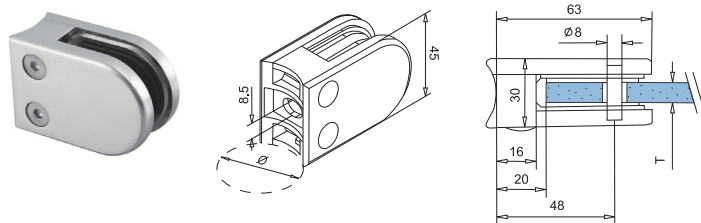
### PIN

Stock No.	Material
G910022	Stainless Steel



## GLASS CLAMPS

Both AISI304 & AISI316 are available. AISI304 for indoor use; AISI316 for outdoor use. Each item is available in either satin finish or mirror finish.



### GLASS CLAMP - MIDDLE D WIDE TYPE

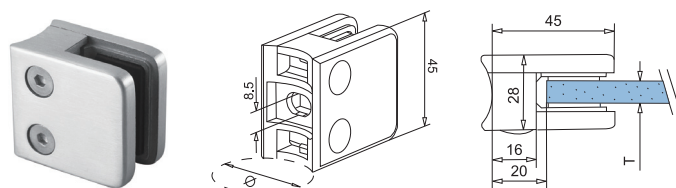
Stock No.	T (mm)	Ø (mm)
G650000	10.76 / 12 / 12.76 / 11.52	Square/Flat
G650042	10.76 / 12 / 12.76 / 11.52	42.4
G650048	10.76 / 12 / 12.76 / 11.52	48.3

### RUBBER GASKET

Stock No.	T (mm)
G650011	10.76 (5-0.76-5)
G650012	12
G650013	12.76 (6-0.76-6)
G650055	11.52 (5-1.52-5)

### PIN

Stock No.	Material
G910024	Stainless Steel



### GLASS CLAMP - SMALL SQUARE TYPE

Stock No.	T (mm)	Ø (mm)
G610000	6 / 6.76 / 8 / 8.76 / 10 / 9.52	Square/Flat
G610034	6 / 6.76 / 8 / 8.76 / 10 / 9.52	33.7
G610042	6 / 6.76 / 8 / 8.76 / 10 / 9.52	42.4
G610048	6 / 6.76 / 8 / 8.76 / 10 / 9.52	48.3

### RUBBER GASKET

Stock No.	T (mm)
G610006	6
G610007	6.76 (3-0.76-3)
G610008	8
G610009	8.76 (4-0.76-4)
G610010	10
G610045	9.52 (4-1.52-4)

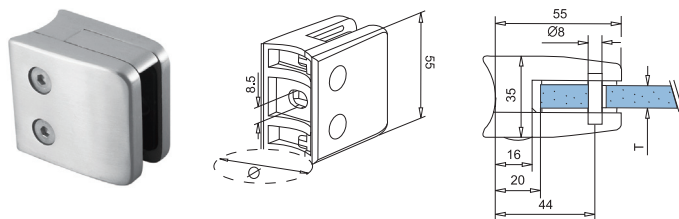
### PIN

Stock No.	Material
G910022	Stainless Steel



## GLASS CLAMPS

Both AISI304 & AISI316 are available. AISI304 for indoor use; AISI316 for outdoor use. Each item is available in either satin finish or mirror finish.



### GLASS CLAMP - MIDDLE SQUARE TYPE

Stock No.	T (mm)	Ø (mm)
G660000	8 / 8.76 / 10 / 10.76 / 12 / 12.76 / 9.52 / 11.52	Square/Flat
G660042	8 / 8.76 / 10 / 10.76 / 12 / 12.76 / 9.52 / 11.52	42.4
G660048	8 / 8.76 / 10 / 10.76 / 12 / 12.76 / 9.52 / 11.52	48.3

### RUBBER GASKET

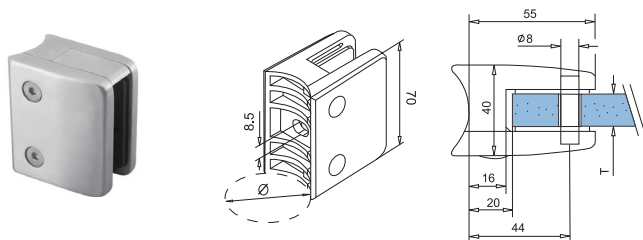
Stock No.	T (mm)
G660008	8
G660009	8.76 (4-0.76-4)
G660010	10
G660011	10.76 (5-0.76-5)
G660012	12
G660013	12.76 (6-0.76-6)
G660045	9.52 (4-1.52-4)
G660055	11.52 (5-1.52-5)

### PIN

Stock No.	Material
G910024	Stainless Steel

### PLATE

Stock No.	Material
G930001	Stainless Steel



### GLASS CLAMP - LARGE SQUARE TYPE

Stock No.	T (mm)	Ø (mm)
G640000	12 / 12.76 / 16.76 / 17.52 / 9.52 / 11.52 / 13.52	Square/Flat
G640042	12 / 12.76 / 16.76 / 17.52 / 9.52 / 11.52 / 13.52	42.4
G640048	12 / 12.76 / 16.76 / 17.52 / 9.52 / 11.52 / 13.52	48.3

### RUBBER GASKET

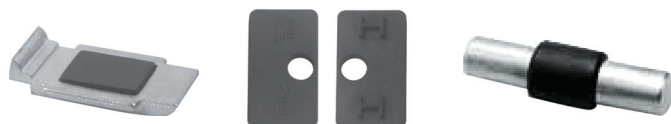
Stock No.	T (mm)
G640012	12
G640013	12.76 (6-0.76-6)
G640017	16.76 (8-0.76-8)
G640018	17.52 (8-1.52-8)
G640045	9.52 (4-1.52-4)
G640055	11.52 (5-1.52-5)
G640065	13.52 (6-1.52-6)

### PIN

Stock No.	Material
G910029	Stainless Steel

### PLATE

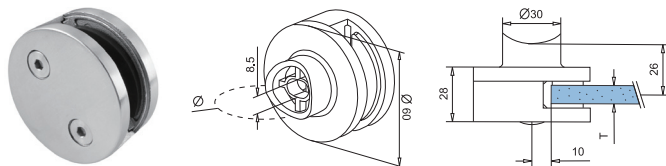
Stock No.	Material
G930002	Stainless Steel





## GLASS CLAMPS

Both AISI304 & AISI316 are available. AISI304 for indoor use; AISI316 for outdoor use.  
Each item is available in either satin finish or mirror finish.

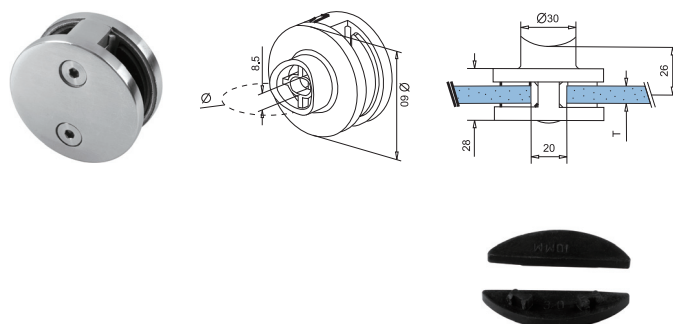


### GLASS CLAMP - ROUND TYPE FOR ONE SIDE

Stock No.	T (mm)	Ø (mm)
G710000	8/8.76/10/10.76/12/12.76	Square/Flat
G710042	8/8.76/10/10.76/12/12.76	42.4
G710048	8/8.76/10/10.76/12/12.76	48.3

### RUBBER GASKET

Stock No.	T (mm)
G710008	8
G710009	8.76
G710010	10
G710011	10.76
G710012	12
G710013	12.76



### GLASS CLAMP - ROUND TYPE FOR BOTH SIDES

Stock No.	T (mm)	Ø (mm)
G720000	8/8.76/10/10.76/12/12.76	Square/Flat
G720042	8/8.76/10/10.76/12/12.76	42.4
G720048	8/8.76/10/10.76/12/12.76	48.3

### RUBBER GASKET

Stock No.	T (mm)
G710008	8
G710009	8.76
G710010	10
G710011	10.76
G710012	12
G710013	12.76

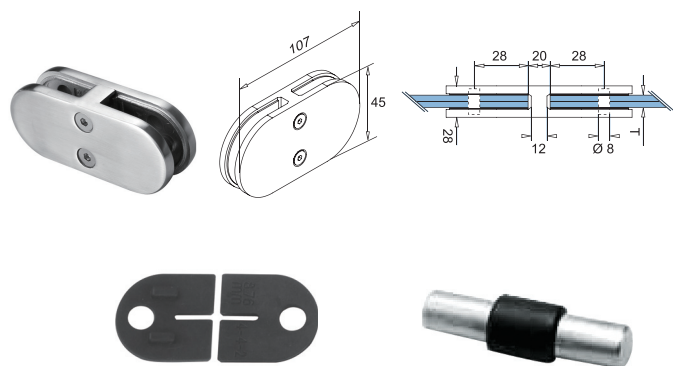


### NYLON COVER CAP FOR LATERAL SCREW

Stock No.	Colour
G920092	Grey
G920099	Aluminumgrey

## GLASS CLAMPS

Both AISI304 & AISI316 are available. AISI304 for indoor use; AISI316 for outdoor use.  
Each item is available in either satin finish or mirror finish.



### D TYPE GLASS CLAMP 180°

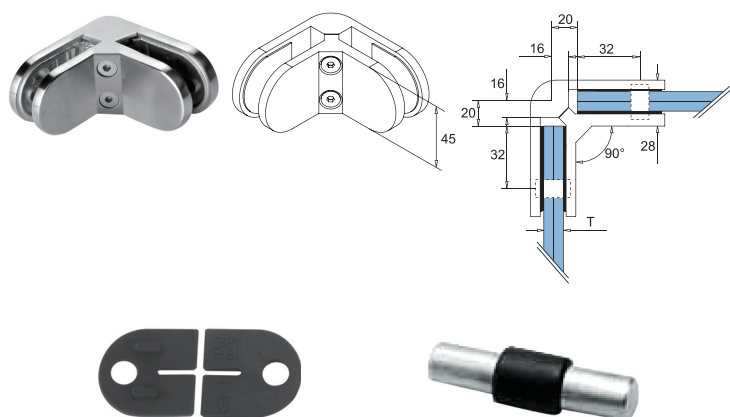
Stock No.	T (mm)
G620180	6/6.76/8/8.76/9.52/10

### RUBBER GASKET

Stock No.	T (mm)
G620006	6
G620008	8
G620045	10
G620007	6.76
G620009	8.76
G620010	9.52

### PIN

Stock No.	Material
G910022	Stainless Steel



### D TYPE GLASS CLAMP 90°

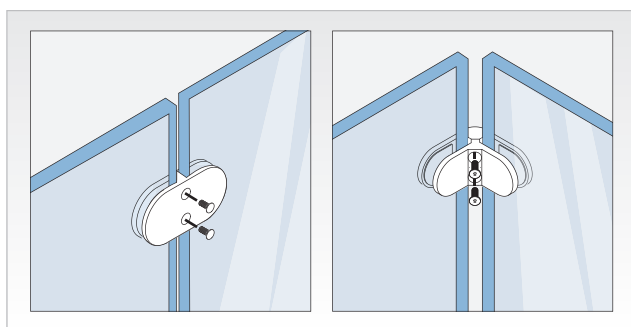
Stock No.	T (mm)
G620090	6/6.76/8/8.76/9.52/10

### RUBBER GASKET

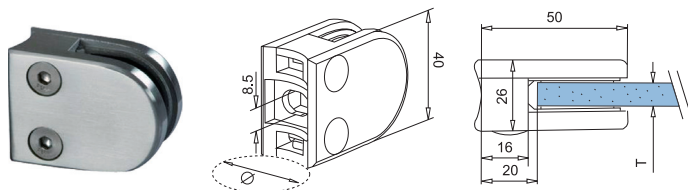
Stock No.	T (mm)
G620006	6
G620008	8
G620045	10
G620007	6.76
G620009	8.76
G620010	9.52

### PIN

Stock No.	Material
G910022	Stainless Steel



## GLASS CLAMPS- Zamak



### GLASS CLAMP - SMALL D TYPE

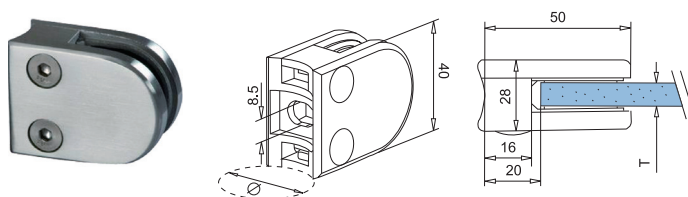
Stock No.	T (mm)	Ø (mm)
G810000	6 / 6.76 / 8	Square/Flat
G810034	6 / 6.76 / 8	33.7
G810042	6 / 6.76 / 8	42.4

### RUBBER GASKET

Stock No.	T (mm)
G600006	6
G600007	6.76(3-0.76-3)
G600008	8

### PIN

Stock No.	Material
G910017	Stainless Steel



### GLASS CLAMP - SMALL D WIDE TYPE

Stock No.	T (mm)	Ø (mm)
G830000	8 / 10	Square/Flat

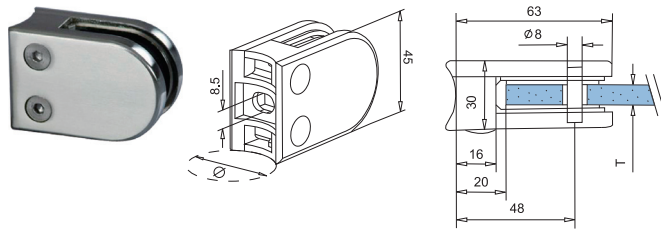
### RUBBER GASKET

Stock No.	T (mm)
G630008	8
G630010	10

### PIN

Stock No.	Material
G910020	Stainless Steel





## GLASS CLAMP - MIDDLE D TYPE

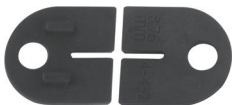
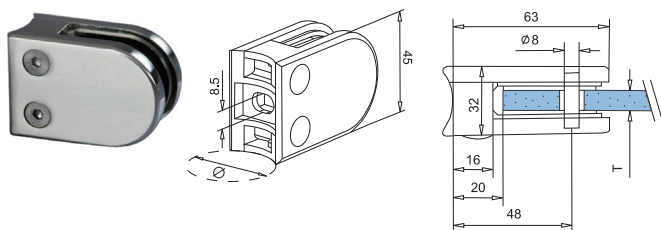
Stock No.	T (mm)	Ø (mm)
G840000	6 / 6.76 / 8 / 8.76 / 10 / 9.52	Square/Flat
G840042	6 / 6.76 / 8 / 8.76 / 10 / 9.52	42.4
G840048	6 / 6.76 / 8 / 8.76 / 10 / 9.52	48.3

## RUBBER GASKET

Stock No.	T (mm)
G620006	6
G620007	6.76(3-0.76-3)
G620008	8
G620009	8.76(4-0.76-4)
G620010	10
G620045	9.52(4-1.52-4)

## PIN

Stock No.	Material
G910022	Stainless Steel



## GLASS CLAMP - MIDDLE D WIDE TYPE

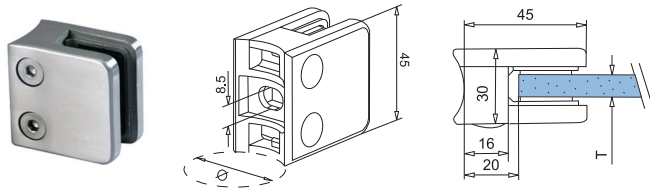
Stock No.	T (mm)	Ø (mm)
G860000	10.76 / 12 / 12.76 / 11.52	Square/Flat
G860042	10.76 / 12 / 12.76 / 11.52	42.4
G860048	10.76 / 12 / 12.76 / 11.52	48.3

## RUBBER GASKET

Stock No.	T (mm)
G650011	10.76(5-0.76-5)
G650012	12
G650013	12.76(6-0.76-6)
G650055	11.52(5-1.52-5)

## PIN

Stock No.	Material
G910024	Stainless Steel



## GLASS CLAMP - SMALL SQUARE TYPE

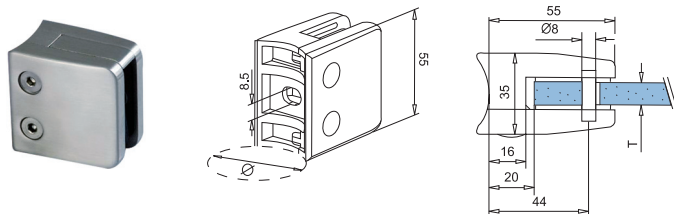
Stock No.	T (mm)	Ø (mm)
G820000	6 / 6.76 / 8 / 8.76 / 10 / 9.52	Square/Flat
G820042	6 / 6.76 / 8 / 8.76 / 10 / 9.52	42.4

## RUBBER GASKET

Stock No.	T (mm)
G610006	6
G610007	6.76(3-0.76-3)
G610008	8
G610009	8.76(4-0.76-4)
G610010	10
G610045	9.52(4-1.52-4)

## PIN

Stock No.	Material
G910022	Stainless Steel



## GLASS CLAMP - MIDDLE SQUARE TYPE

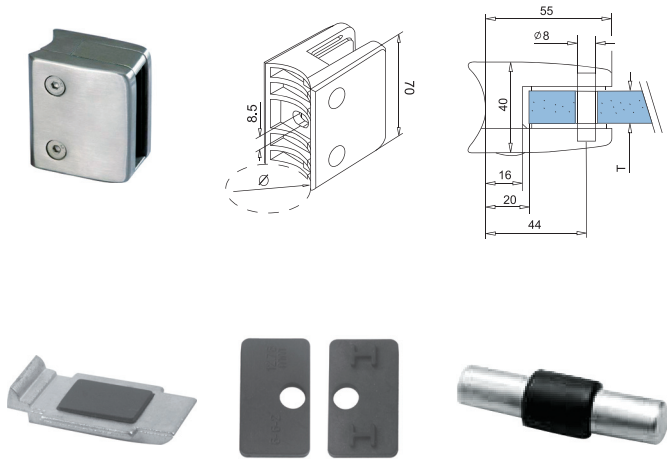
Stock No.	T (mm)	Ø (mm)
G850000	8 / 8.76 / 10 / 10.76 / 12 / 12.76 / 9.52 / 11.52	Square/Flat
G850042	8 / 8.76 / 10 / 10.76 / 12 / 12.76 / 9.52 / 11.52	42.4
G850048	8 / 8.76 / 10 / 10.76 / 12 / 12.76 / 9.52 / 11.52	48.3

## RUBBER GASKET

Stock No.	T (mm)
G660008	8
G660009	8.76(4-0.76-4)
G660010	10
G660011	10.76(5-0.76-5)
G660012	12
G660013	12.76(6-0.76-6)
G660045	9.52(4-1.52-4)
G660055	11.52(5-1.52-5)

## PIN

Stock No.	Material
G910024	Stainless Steel



GLASS CLAMP - LARGE SQUARE TYPE

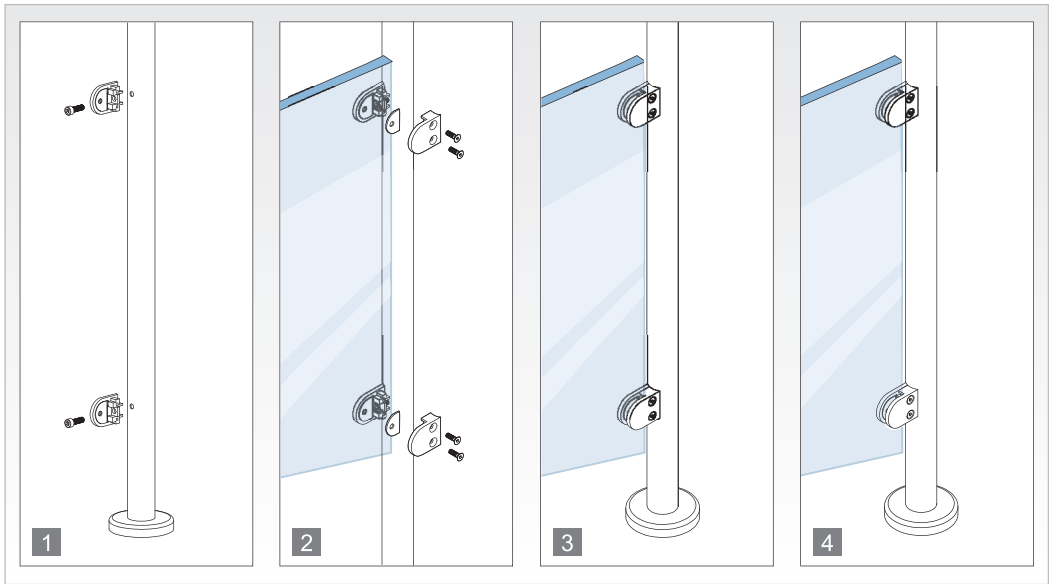
Stock No.	T (mm)	Ø (mm)
G870000	12 / 12.76 / 16.76 / 17.52 / 9.52 / 11.52 / 13.52	Square/Flat
G870042	12 / 12.76 / 16.76 / 17.52 / 9.52 / 11.52 / 13.52	42.4
G870048	12 / 12.76 / 16.76 / 17.52 / 9.52 / 11.52 / 13.52	48.3

RUBBER GASKET

Stock No.	T (mm)
G640012	12
G640013	12.76(6-0.76-6)
G640017	16.76(8-0.76-8)
G640018	17.52(8-1.52-8)
G640045	9.52(4-1.52-4)
G640055	11.52(5-1.52-5)
G640065	13.52(6-1.52-6)

PIN

Stock No.	Material
G910029	Stainless Steel



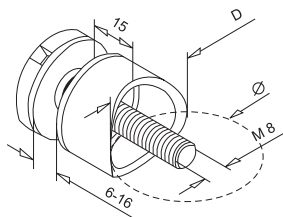




## GLASS HOLDERS / STANDOFF

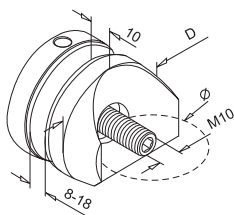
## GLASS HOLDERS / STANDOFF

Both AISI304 & AISI316 are available. AISI304 for indoor use; AISI316 for outdoor use.  
Each item is available in either satin finish or mirror finish.



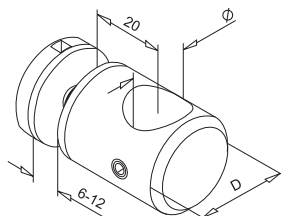
### 30MM GLASS HOLDER

Stock No.	Ø (mm)	D (mm)
J062100	Square/Flat	30
J062134	33.7	30
J062142	42.4	30
J062148	48.3	30



### 50MM GLASS HOLDER

Stock No.	Ø (mm)	D (mm)
J062200	Square/Flat	50
J062242	42.4	50
J062248	48.3	50

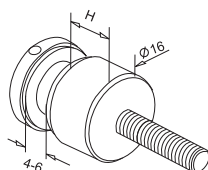


### GLASS-BAR HOLDER

Stock No.	Ø (mm)	D (mm)
E073406	10	25
E073412	12	25
E073418	14	25
E073424	16	25

## GLASS HOLDERS / STANDOFF

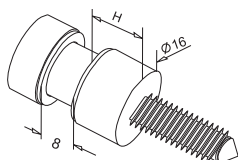
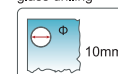
Both AISI304 & AISI316 are available. AISI304 for indoor use; AISI316 for outdoor use.  
Each item is available in either satin finish or mirror finish.



### 16MM GLASS HOLDER

Stock No.	H (mm)	Thread
J0624110A	11	M5x40mm threaded stud
J0624110AW	11	M5x40mm wood screw

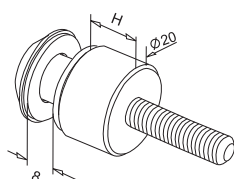
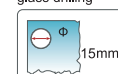
glass drilling



### 20MM GLASS HOLDER

Stock No.	H (mm)	Thread
J06252000	13	Ø4.5x60mm wood screw

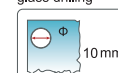
glass drilling



### 16MM GLASS HOLDER

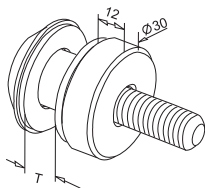
Stock No.	H (mm)	Thread
J0634110A	11	M5x40mm threaded stud
J0634110AW	11	5x40mm countersink wood screw

glass drilling



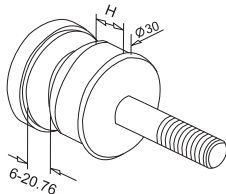
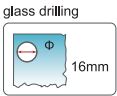
GLASS HOLDERS / STANDOFF

Both AISI304 & AISI316 are available. AISI304 for indoor use; AISI316 for outdoor use.  
Each item is available in either satin finish or mirror finish.



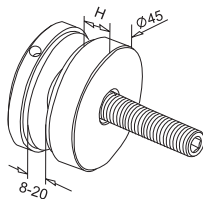
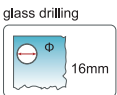
30MM GLASS HOLDER

Stock No.	T (mm)	Thread
J0635120A	6-12	M6x40mm threaded stud
J0635120B	6-20	M8x40mm threaded stud
J0635120AW	6-12	6x50mm countersink wood screw



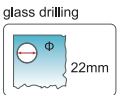
30MM GLASS HOLDER

Stock No.	H (mm)	Thread
J0626120A	12	M6x60mm threaded stud
J0626120B	12	M8x60mm threaded stud
J0626120AW	12	M6x60 wood screw



45MM GLASS HOLDER

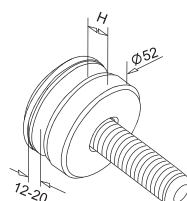
Stock No.	H (mm)	Thread
J0627120C	12	M10x50mm threaded stud
J0627120CW	12	M10x80mm wood screw





## GLASS HOLDERS / STANDOFF

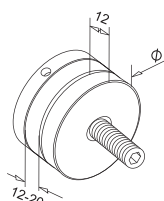
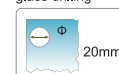
Both AISI304 & AISI316 are available. AISI304 for indoor use; AISI316 for outdoor use.  
Each item is available in either satin finish or mirror finish.



### 52MM GLASS HOLDER

Stock No.	H (mm)	Thread
J0636120C	12	M10x70,DIN7991

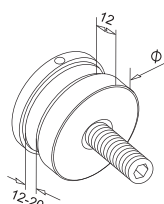
glass drilling



### 52/72MM GLASS HOLDER

Stock No.	Ø (mm)	Thread
J0628100C	52	M10
J0629100C	72	M10

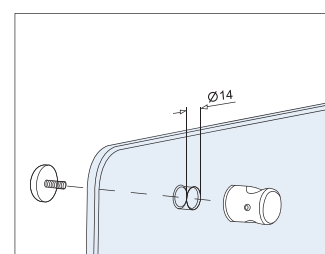
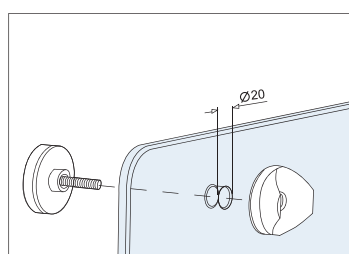
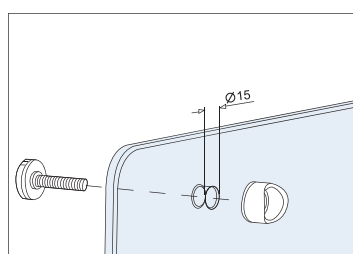
glass drilling



### 52/72MM GLASS HOLDER

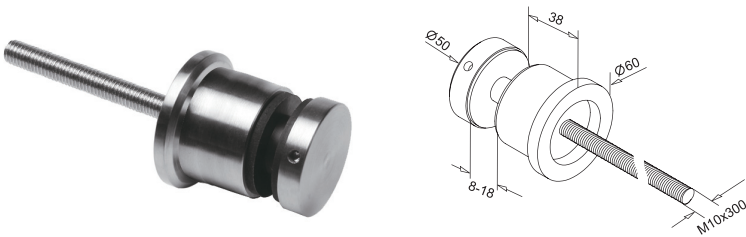
Stock No.	Ø (mm)	Thread
J0644100C	52	M10
J0645100C	72	M10

glass drilling



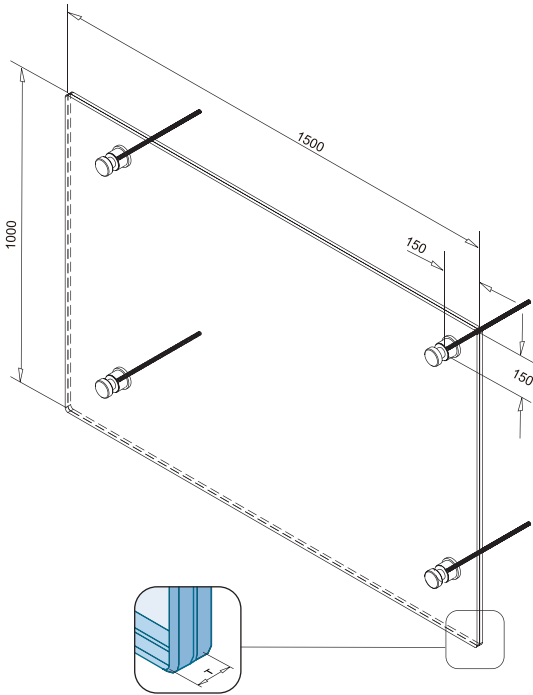
GLASS HOLDERS / STANDOFF

Both AISI304 & AISI316 are available. AISI304 for indoor use; AISI316 for outdoor use.  
Each item is available in either satin finish or mirror finish.



GLASS BALCONY HOLDER

Stock No.	Ø (mm)
J062300	Flat

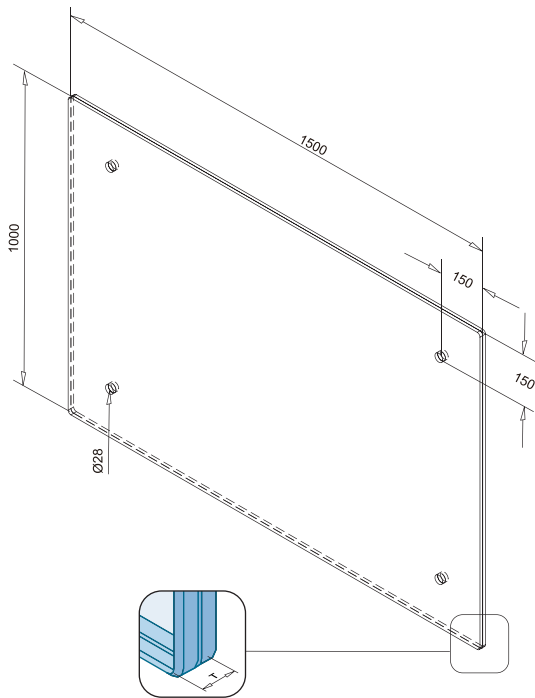


BALCONY BALUSTRADE

Stock No.	T (mm)
BVSG2018	17.52

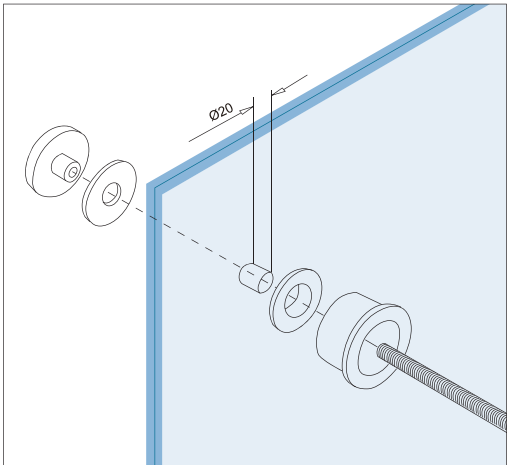
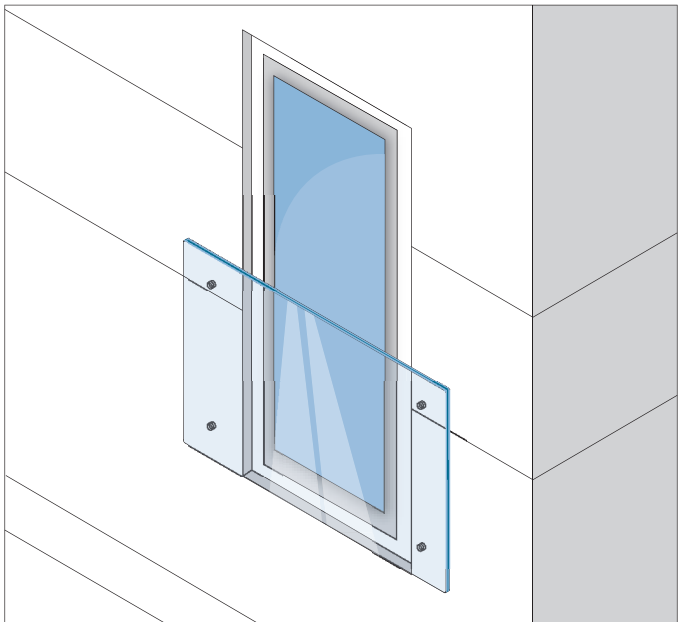


GLASS HOLDERS / STANDOFF



GLASS OF BALCONY

Stock No.	T (mm)
VSG2018A	17.52

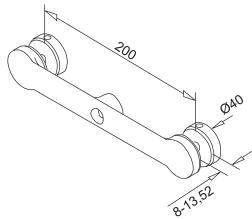




## GLASS ADAPTERS

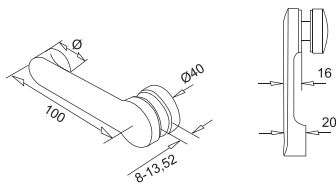
GLASS ADAPTERS

Both AISI304 & AISI316 are available. AISI304 for indoor use; AISI316 for outdoor use.  
Each item is available in either satin finish or mirror finish.



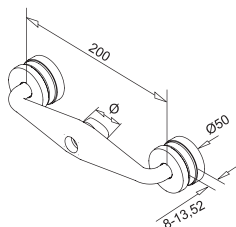
FLAT GLASS BRACKET-"CENTER"

Stock No.	Ø (mm)
G100400	Flat
G100442	42.4
G110448	48.3



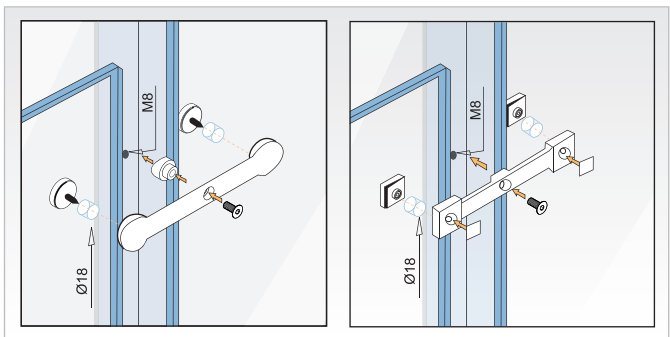
FLAT GLASS BRACKET-"END"

Stock No.	Ø (mm)
G110400	Flat
G110442	42.4
G110448	48.3



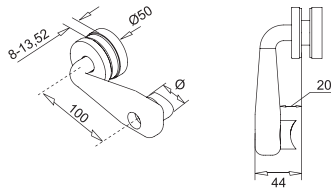
ROUND GLASS BRACKET-"CENTER"

Stock No.	Ø (mm)
G100000	Flat
G100042	42.4
G100048	48.3



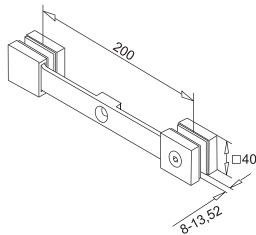
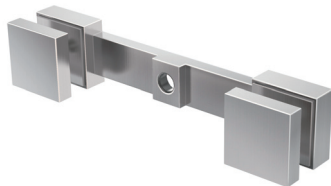
GLASS ADAPTERS

Both AISI304 & AISI316 are available. AISI304 for indoor use; AISI316 for outdoor use.  
Each item is available in either satin finish or mirror finish.



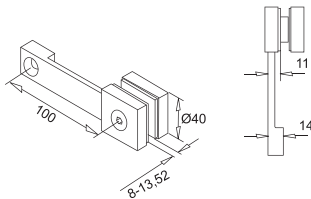
ROUND GLASS BRACKET-"END"

Stock No.	Ø (mm)
G110000	Flat
G110042	42.4
G110048	48.3



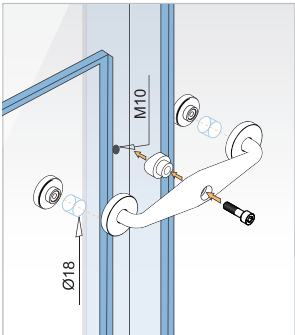
SQUARE GLASS BRACKET-"CENTER"

Stock No.	Ø (mm)
G100500	Flat



SQUARE GLASS BRACKET-"END"

Stock No.	Ø (mm)
G110500	Flat



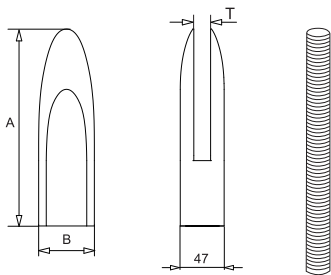




## BASE GLASS CLAMPS / SPIGOT

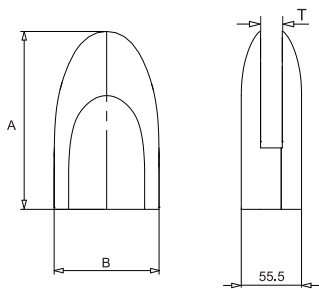
## BASE GLASS CLAMPS / SPIGOT

A.Material: Both AISI316 & Dulex 2205 are available. AISI316 for outdoor use; Dulex 2205 for coast use.  
B.Surface: Each item is available in either satin finish or mirror finish.



### J-CAM SPIGOT-ONE PIECE

Stock No.	T (mm)	A (mm)	B (mm)	Material
G050700	8-13.52	210	59.7	2205



### NOVO SPIGOT

Stock No.	T (mm)	A (mm)	B (mm)
G050612	10/12/16	164	96.5



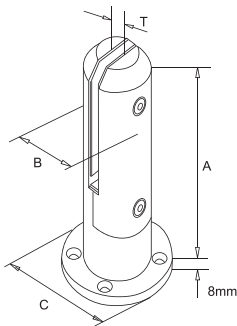
### PIN

Stock No.	Material
G910132-A4	Stainless Steel



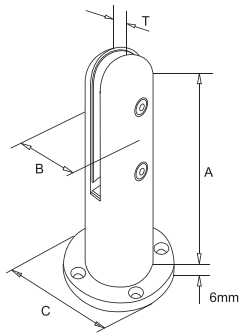
BASE GLASS CLAMPS / SPIGOT

A.Material: Both AISI316 & Dulex 2205 are available. AISI316 for outdoor use; Dulex 2205 for coast use  
B.Surface: Each item is available in either satin finish or mirror finish.



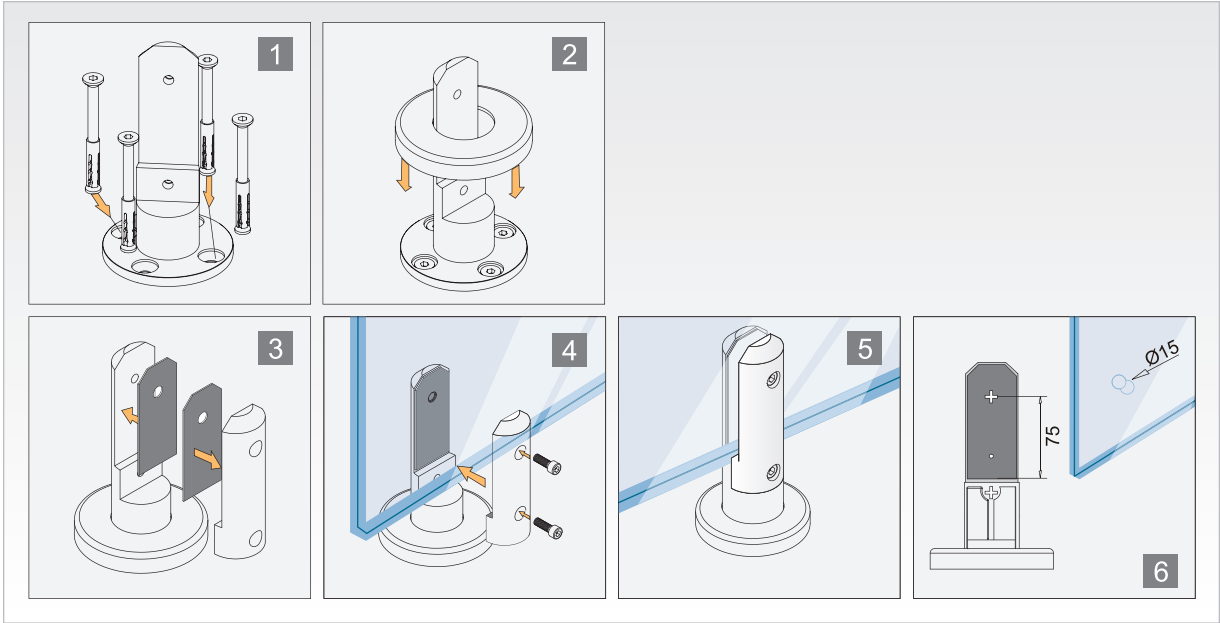
ROUND SPIGOT WITH BASE PLATE

Stock No.	T (mm)	A (mm)	B (mm)	C (mm)
G050348	10/12	172	48	100



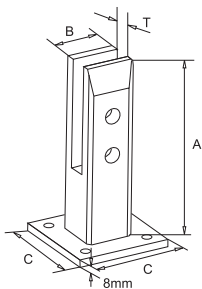
ROUND SPIGOT WITH BASE PLATE

Stock No.	T (mm)	A (mm)	B (mm)	C (mm)
G050550	18	174	48	98



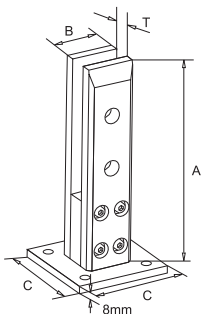
BASE GLASS CLAMPS / SPIGOT

A.Material: Both AISI316 & Dulex 2205 are available. AISI316 for outdoor use; Dulex 2205 for coast use  
B.Surface: Each item is available in either satin finish or mirror finish.



SQUARE SPIGOT WITH BASE PLATE

Stock No.	T (mm)	A (mm)	B (mm)	C (mm)
G055528	18	174	46	99

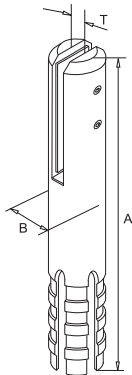


SQUARE SPIGOT WITH BASE PLATE

Stock No.	T (mm)	A (mm)	B (mm)	C (mm)
G050450	12/16	215	50	100

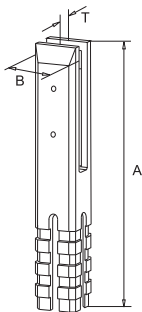
# BASE GLASS CLAMPS / SPIGOT

A.Material: Both AISI316 & Dulex 2205 are available. AISI316 for outdoor use; Dulex 2205 for coast use  
B.Surface: Each item is available in either satin finish or mirror finish.



## ROUND SPIGOT

Stock No.	T (mm)	A (mm)	B (mm)
G050648	18	290	48
G050650	18	290	50
G051648	18	275	48

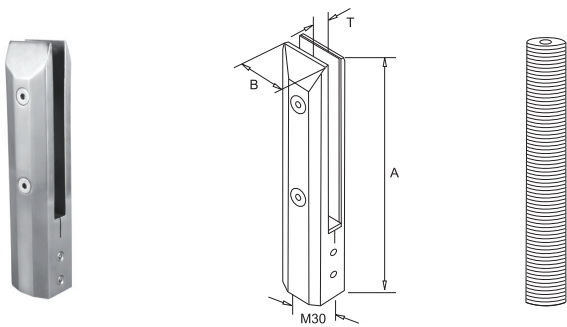


## SQUARE SPIGOT

Stock No.	T (mm)	A (mm)	B (mm)
G055451	20	350	50
G055452	20	265	48
G054543	18	275	48

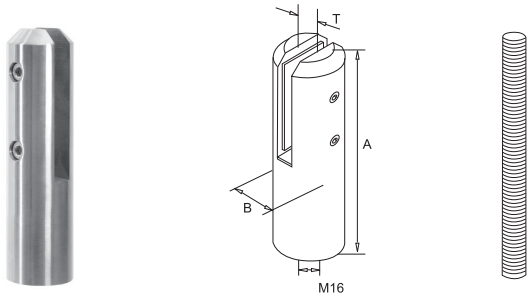
BASE GLASS CLAMPS / SPIGOT

A.Material: Both AISI316 & Dulex 2205 are available. AISI316 for outdoor use; Dulex 2205 for coast use  
B.Surface: Each item is available in either satin finish or mirror finish.



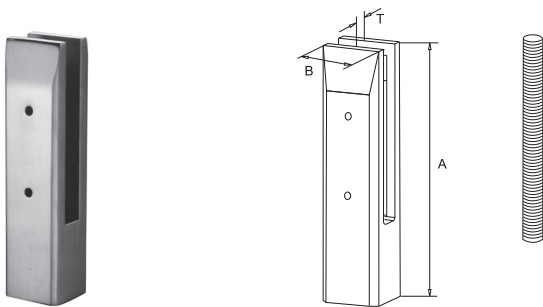
SQUARE SPIGOT

Stock No.	T (mm)	A (mm)	B (mm)
G055250	10/12	250	50



ROUND SPIGOT

Stock No.	T (mm)	A (mm)	B (mm)
G050150	10/12	195	50

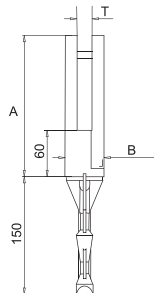


SQUARE SPIGOT

Stock No.	T (mm)	A (mm)	B (mm)
G055450	10/12/16	210	50

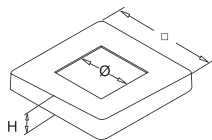
BASE GLASS CLAMPS / SPIGOT

A.Material: Both AISI316 & Dulex 2205 are available. AISI316 for outdoor use; Dulex 2205 for coast use  
B.Surface: Each item is available in either satin finish or mirror finish.



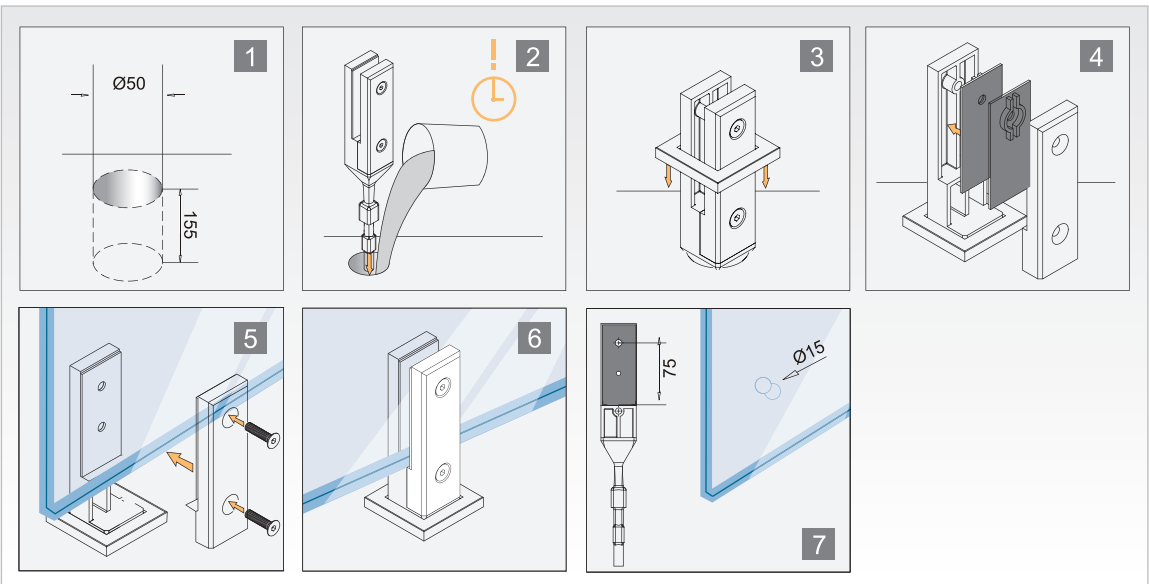
SQUARE SPIGOT

Stock No.	T (mm)	A (mm)	B (mm)
G055512	12	180	50



SQUARE SPIGOT COVER

Stock No.	Ø (mm)	H (mm)	□ (mm)
S050308	50	11	103





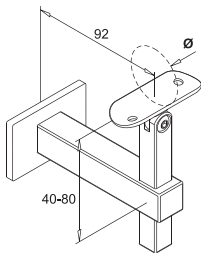


## SQUARE FITTINGS



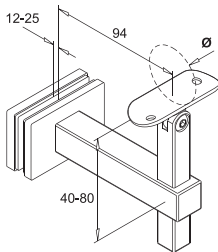
SQUARE FITTINGS

Both AISI304 & AISI316 are available. AISI304 for indoor use; AISI316 for outdoor use.  
Each item is available in either satin finish or mirror finish.



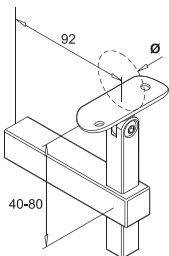
ADJUSTABLE HANDRAIL WALL BRACKET  
-SQUARE LINE

Stock No.	Ø (mm)
S420200	Flat
S420242	42.4
S420248	48.3



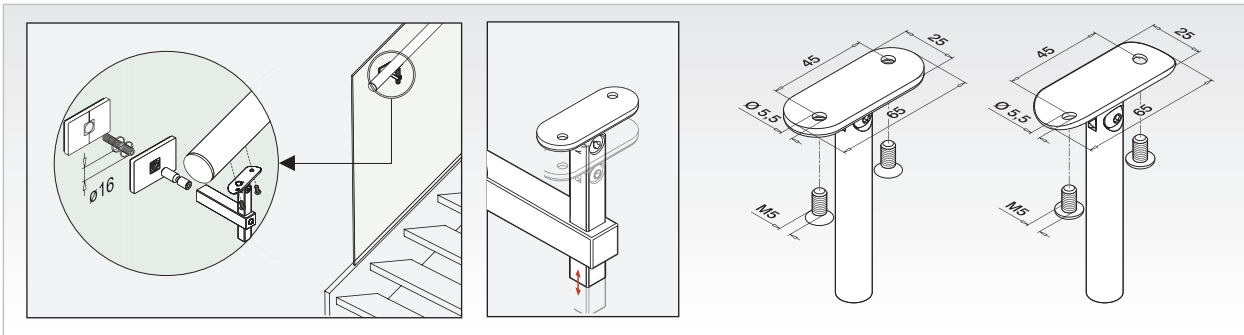
ADJUSTABLE HANDRAIL GLASS BRACKET  
-SQUARE LINE

Stock No.	Ø (mm)
S420300	Flat
S420342	42.4
S420348	48.3



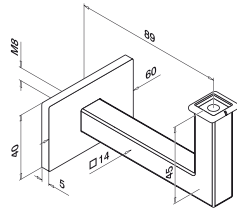
ADJUSTABLE HANDRAIL BRACKET  
-SQUARE LINE

Stock No.	Ø (mm)
S420100	Flat
S420142	42.4
S420148	48.3



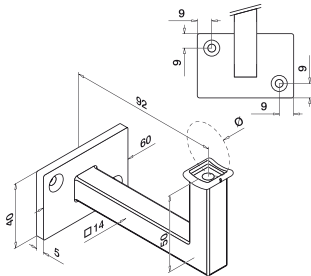
SQUARE FITTINGS

Both AISI304 & AISI316 are available. AISI304 for indoor use; AISI316 for outdoor use.  
Each item is available in either satin finish or mirror finish.



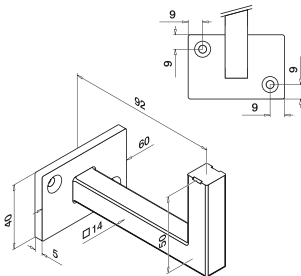
HANDRAIL WALL BRACKET-SQUARE LINE

Stock No.	L (mm)
S420900	Flat
S420942	42.4
S420948	48.3



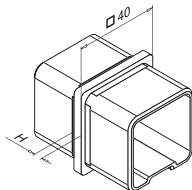
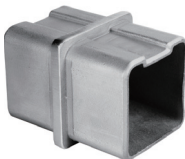
HANDRAIL WALL BRACKET-SQUARE LINE

Stock No.	L (mm)
S421000	Flat
S421042	42.4
S421048	48.3



HANDRAIL WELDED WALL BRACKET  
-SQUARE LINE

Stock No.
S421100

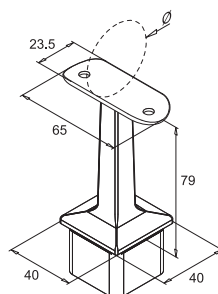


SQUARE TUBE CONNECTOR

Stock No.	H (mm)
S410340	4

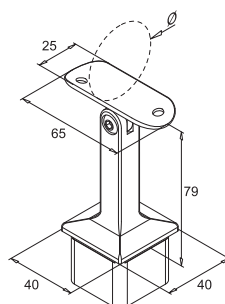
## SQUARE FITTINGS

Both AISI304 & AISI316 are available. AISI304 for indoor use; AISI316 for outdoor use.  
Each item is available in either satin finish or mirror finish.



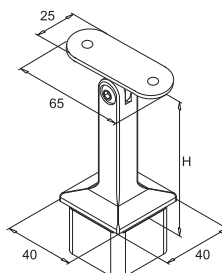
### HANDRAIL SUPPORT-SQUARE

Stock No.	Ø (mm)
S460100	Flat
S460142	42.4
S460148	48.3



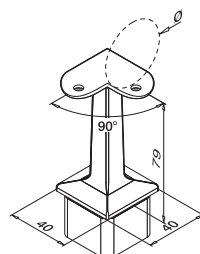
### ADJUSTABLE HANDRAIL SUPPORT -SQUARE

Stock No.	Ø (mm)
S460200	Flat
S460242	42.4
S460248	48.3



### ADJUSTABLE HANDRAIL SUPPORT -SQUARE

Stock No.	H (mm)
S460200	79/81

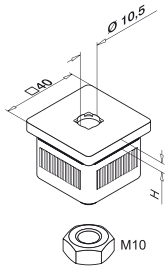
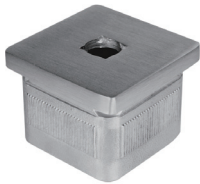


### 90 DEGREE HANDRAIL SUPPORT -SQUARE

Stock No.	Ø (mm)
S460300	Flat
S460342	42.4
S460348	48.3

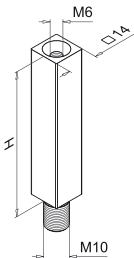
SQUARE FITTINGS

Both AISI304 & AISI316 are available. AISI304 for indoor use; AISI316 for outdoor use.  
Each item is available in either satin finish or mirror finish.



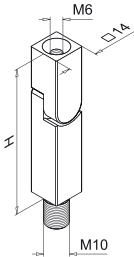
CURVED SQUARE TUBE BASE-SQUARE LINE

Stock No.	H (mm)
S461640	5



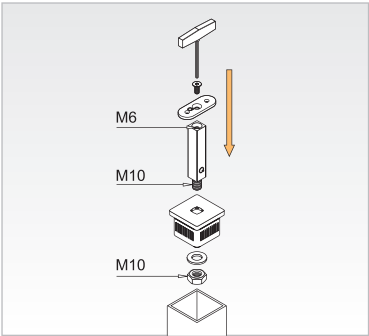
STRAIGHT PIN-SQUARE LINE

Stock No.	H (mm)
S461168	68



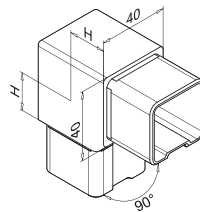
ADJUSTABLE PIN-SQUARE LINE

Stock No.	H (mm)
S461268	68



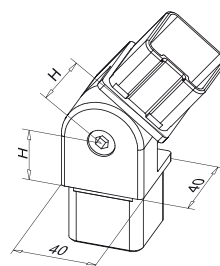
## SQUARE FITTINGS

Both AISI304 & AISI316 are available. AISI304 for indoor use; AISI316 for outdoor use.  
Each item is available in either satin finish or mirror finish.



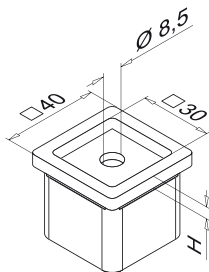
### 90 DEGREE SQUARE TUBE ELBOW

Stock No.	H (mm)
S410140	25



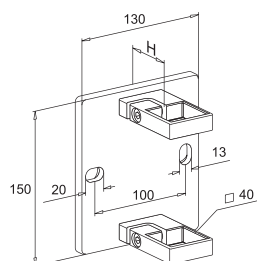
### ADJUSTABLE SQUARE TUBE ELBOW

Stock No.	H (mm)
S410240	26



### ADAPTER-SQUARE

Stock No.	H (mm)
S461540	5

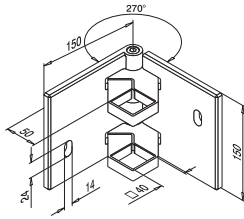


### SQUARE WALL BRACKET

Stock No.	H (mm)
S420140	49.5

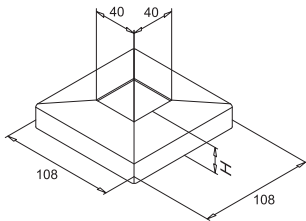
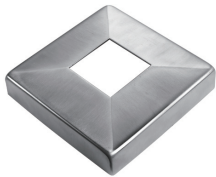
SQUARE FITTINGS

Both AISI304 & AISI316 are available. AISI304 for indoor use; AISI316 for outdoor use.  
Each item is available in either satin finish or mirror finish.



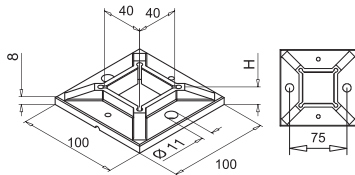
HINGE WALL BRACKET-SQUARE

Stock No.	□ (mm)
S421140	40×40



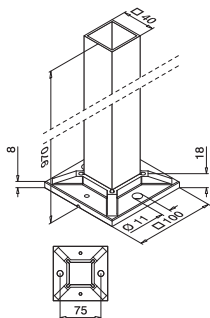
SQUARE COVER PLATE

Stock No.	H (mm)
S450140	25



SQUARE POST-BASE PLATE

Stock No.	H (mm)
S455140	18



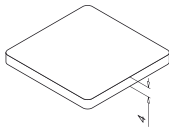
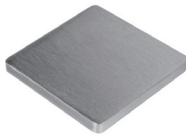
SQUARE BASE WITH TUBE

Stock No.	H (mm)
SP010640	970



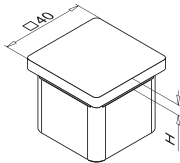
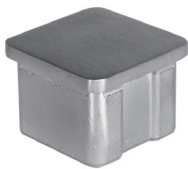
SQUARE FITTINGS

Both AISI304 & AISI316 are available. AISI304 for indoor use; AISI316 for outdoor use.  
Each item is available in either satin finish or mirror finish.



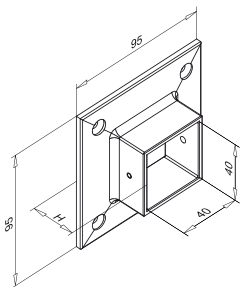
SQUARE DISCS

Stock No.	□ (mm)
S430135	35x35
S430140	40x40



SQUARE END CAP-FLAT

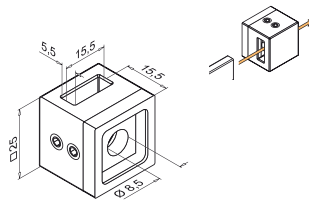
Stock No.	H (mm)
S430240	4



SQUARE FLANGE

Stock No.	H (mm)
S420540	30

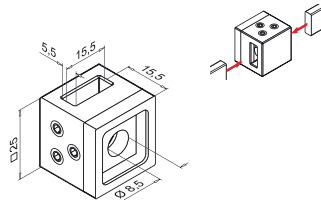
Both AISI304 & AISI316 are available. AISI304 for indoor use; AISI316 for outdoor use. Each item is available in either satin finish or mirror finish.



**Stock No.**

(mm)

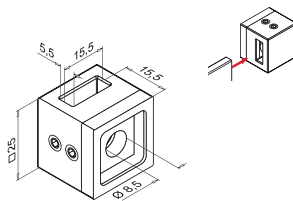
S910100	25
---------	----



**Stock No.**

(mm)

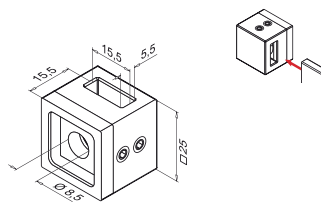
S910200	25
---------	----



**Stock No.**

□  
(mm)

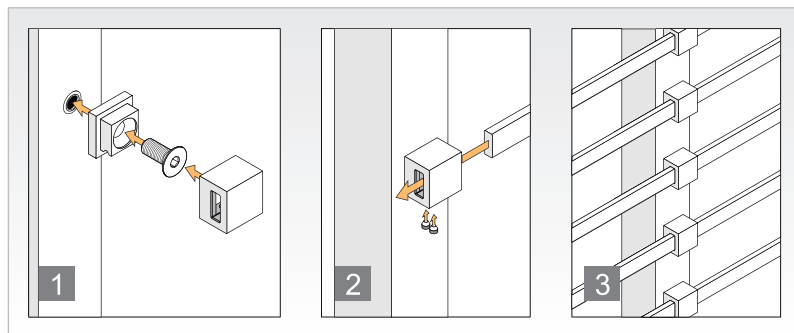
S910300	25
---------	----



**Stock No.**

(mm)

S910400	25
---------	----





A photograph showing a row of six silver, cylindrical street bollards installed on a concrete sidewalk. The bollards are arranged in a line, receding into the distance. To the left of the sidewalk is a dark asphalt road. The background is slightly blurred, showing some greenery and a building. A semi-transparent orange rectangle is visible in the top right corner of the image.

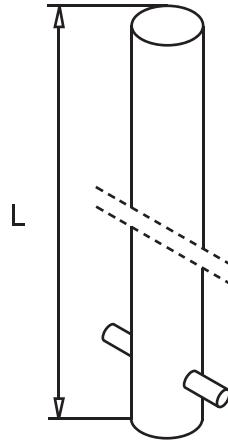
## STREET BOLLARD



## STREET BOLLARD

A. Material: AISI304, AISI316, Carbinox.

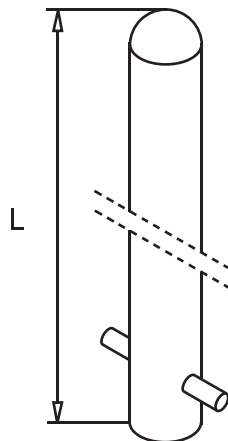
B. Surface: Each item is available in either satin finish or mirror finish.



### FLAT TOP BOLLARD

Stock No.	Dia (mm)
BF04820	48
BF06020	60
BF07620	76
BF08920	89
BF10120	101
BF11420	114
BF12920	129
BF14020	140
BF15420	154
BF16820	168
BF20420	204

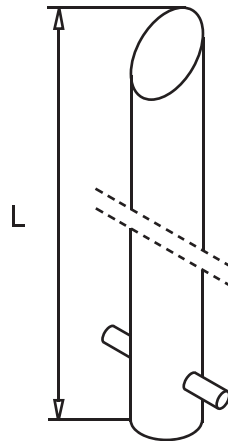
Stock No.	Dia (inch)
UBF02308	2.375
UBF03000	3
UBF03102	3.5
UBF04000	4
UBF04102	4.5
UBF05000	5
UBF05102	5.5
UBF06000	6
UBF06304	6.75
UBF06508	6.625
UBF08000	8
UBF08304	8.75
UBF10000	10
UBF12000	12



### DOMED TOP BOLLARD

Stock No.	Dia (mm)
BD04820	48
BD06020	60
BD07620	76
BD08920	89
BD10120	101
BD11420	114
BD12920	129
BD14020	140
BD15420	154
BD16820	168
BD20420	204

Stock No.	Dia (inch)
UBD02308	2.375
UBD03000	3
UBD03102	3.5
UBD04000	4
UBD04102	4.5
UBD05000	5
UBD05102	5.5
UBD06000	6
UBD06304	6.75
UBD06508	6.625
UBD08000	8
UBD08304	8.75
UBD10000	10
UBD12000	12



### SLOPED TOP BOLLARD

Stock No.	Dia (mm)
BS04820	48
BS06020	60
BS07620	76
BS08920	89
BS10120	101
BS11420	114
BS12920	129
BS14020	140
BS15420	154
BS16820	168
BS20420	204

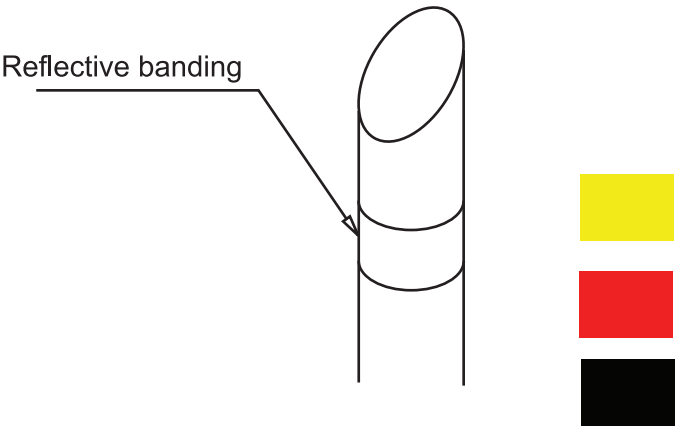
Stock No.	Dia (inch)
UBS02308	2.375
UBS03000	3
UBS03102	3.5
UBS04000	4
UBS04102	4.5
UBS05000	5
UBS05102	5.5
UBS06000	6
UBS06304	6.75
UBS06508	6.625
UBS08000	8
UBS08304	8.75
UBS10000	10
UBS12000	12

**STREET BOLLARD**

A.Material: AISI304, AISI316, Carbinox.  
B.Surface: Each item is available in either satin finish or mirror finish.

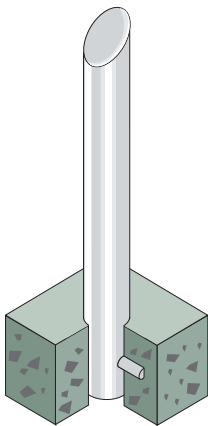


Optional accessory

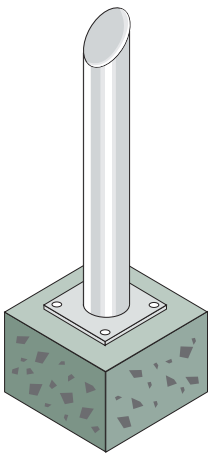


Optional length: 36"  
48"  
54"

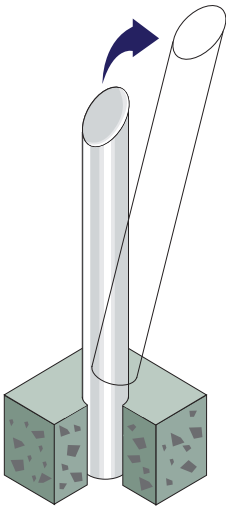
ROOT FIXED



BOLT FIXED



REMOVABLE



## Total Stainless & Engineering Supplies Ltd.

---

Unit 5A , Newtown Avenue  
Malahide Road Industrial Park  
Dublin 17 PN20 Ireland.  
T: +353 1 877 4188  
F: +353 1 848 2800  
E: [info@totalstainless.ie](mailto:info@totalstainless.ie)  
W: [www.totalstainless.ie](http://www.totalstainless.ie)



CARD PAYMENTS ACCEPTED:



TOTAL STAINLESS & ENGINEERING SUPPLIES LTD  
UNIT 5A, NEWTOWN AVENUE,  
MALAHIDE ROAD INDUSTRIAL PARK,  
DUBLIN 17,  
IRELAND.

TEL: +353 1 877 4188  
FAX: +353 1 848 2800  
E-MAIL: [INFO@TOTALSTAINLESS.IE](mailto:INFO@TOTALSTAINLESS.IE)  
WEB: [WWW.TOTALSTAINLESS.IE](http://WWW.TOTALSTAINLESS.IE)